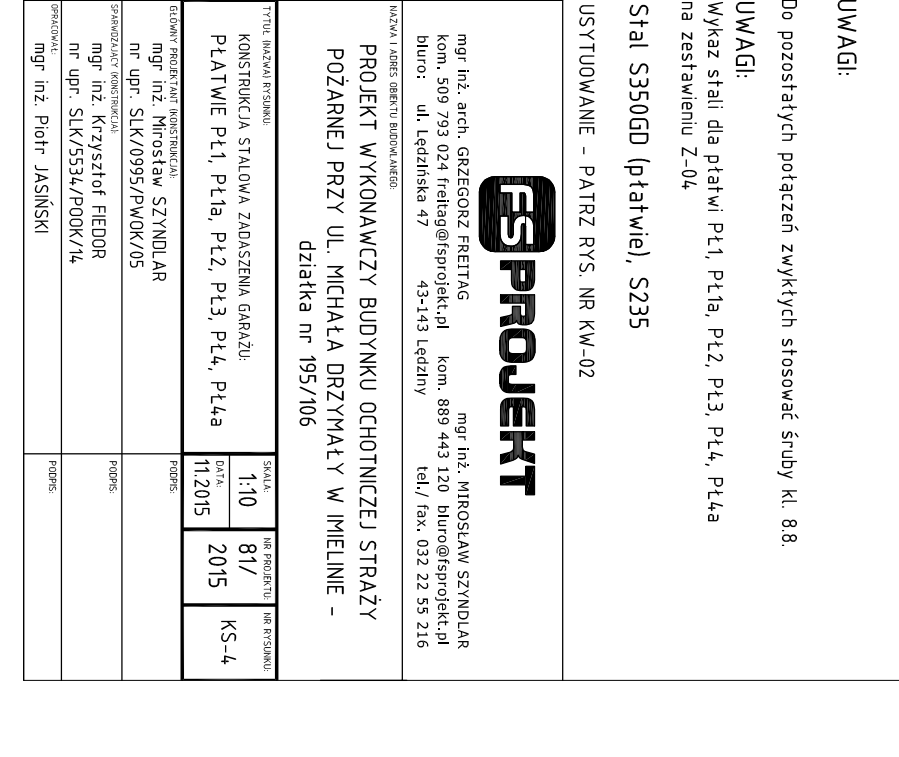
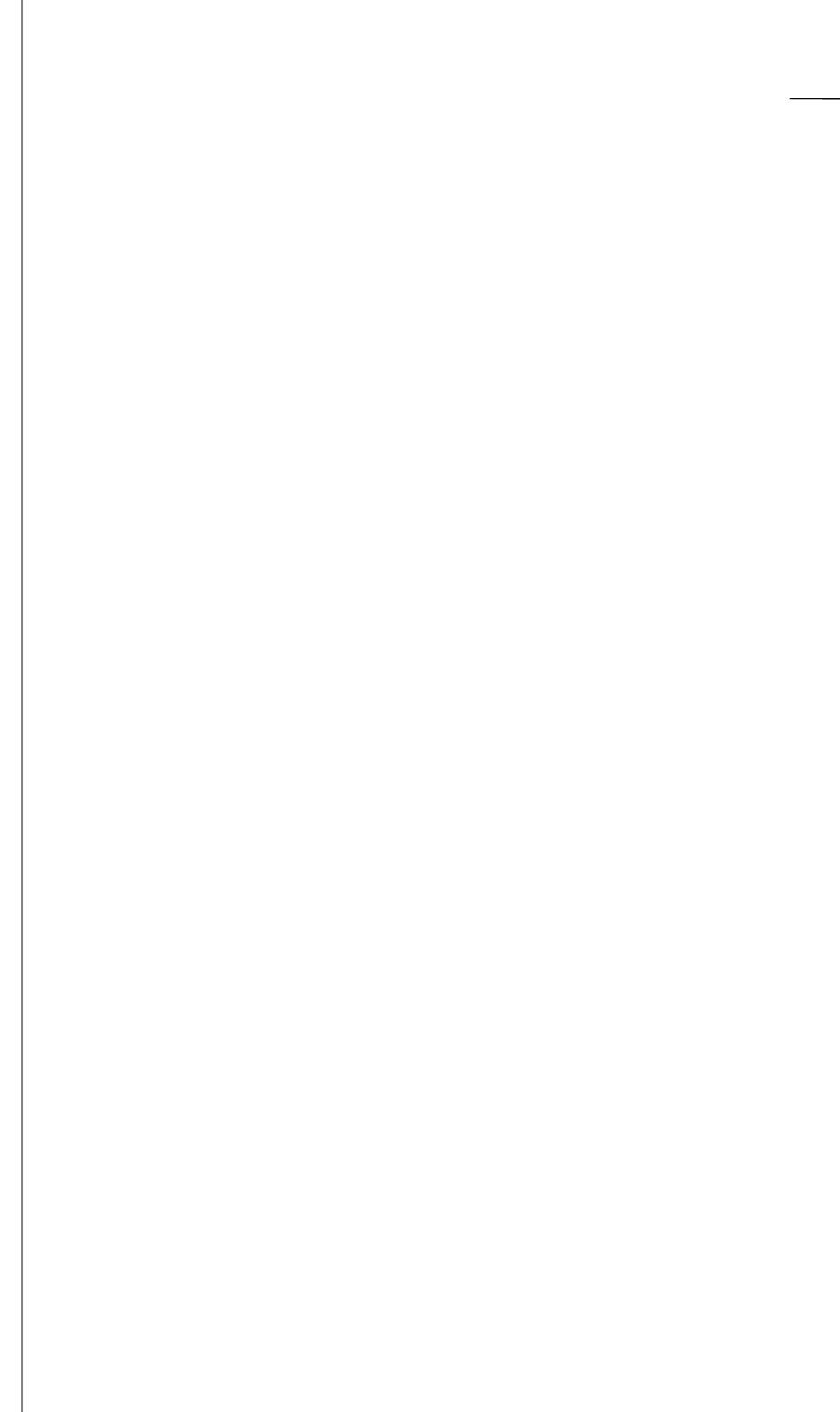
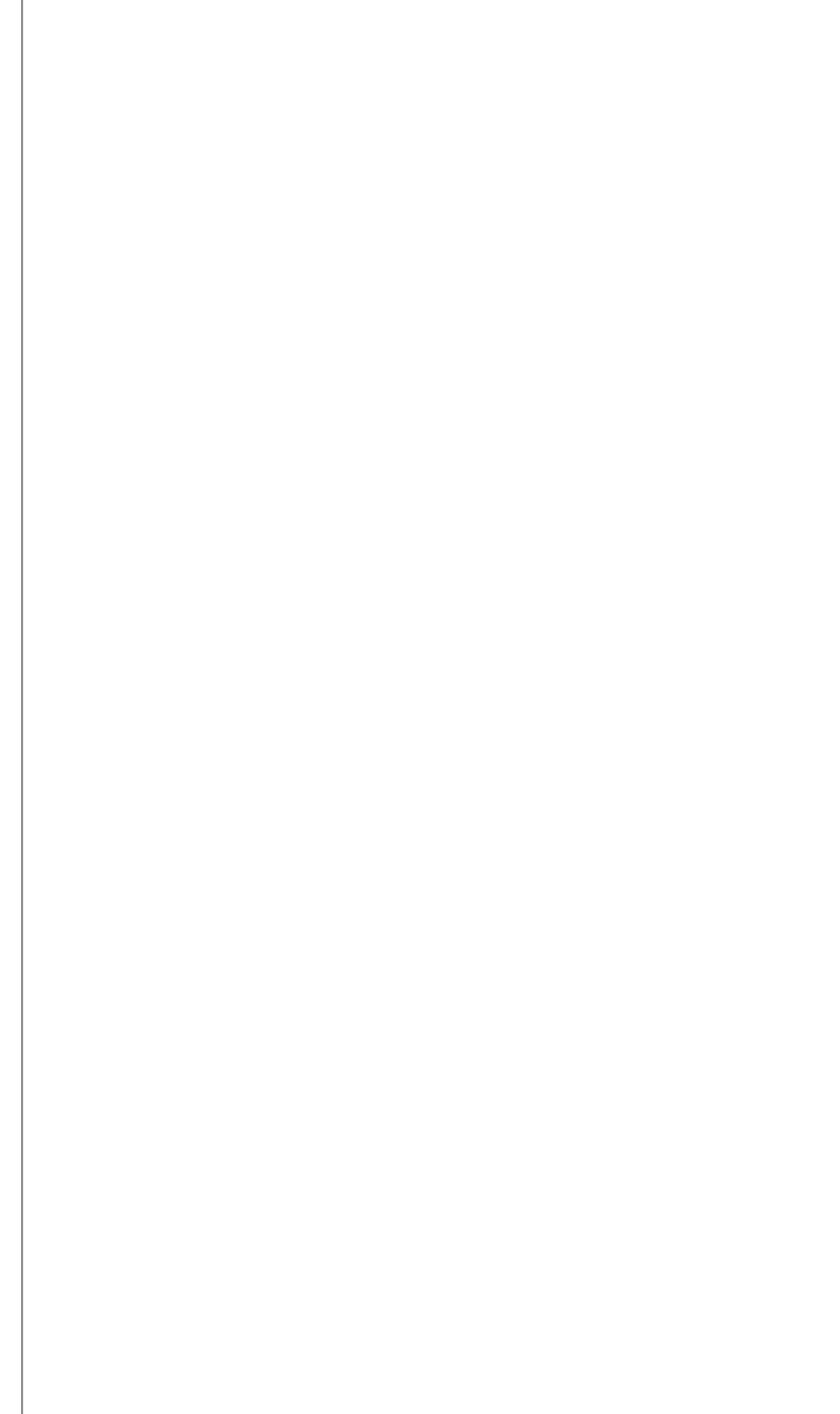
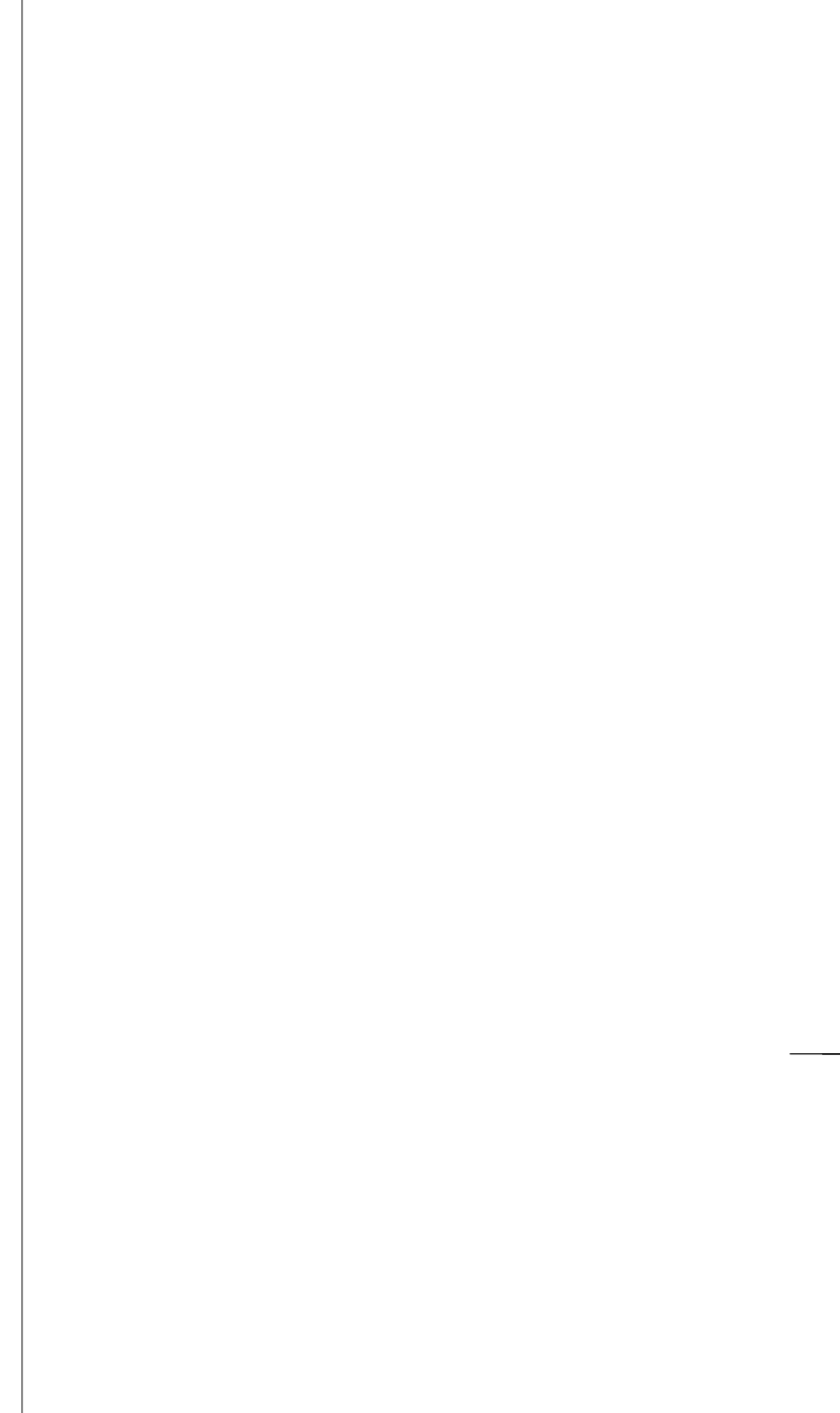
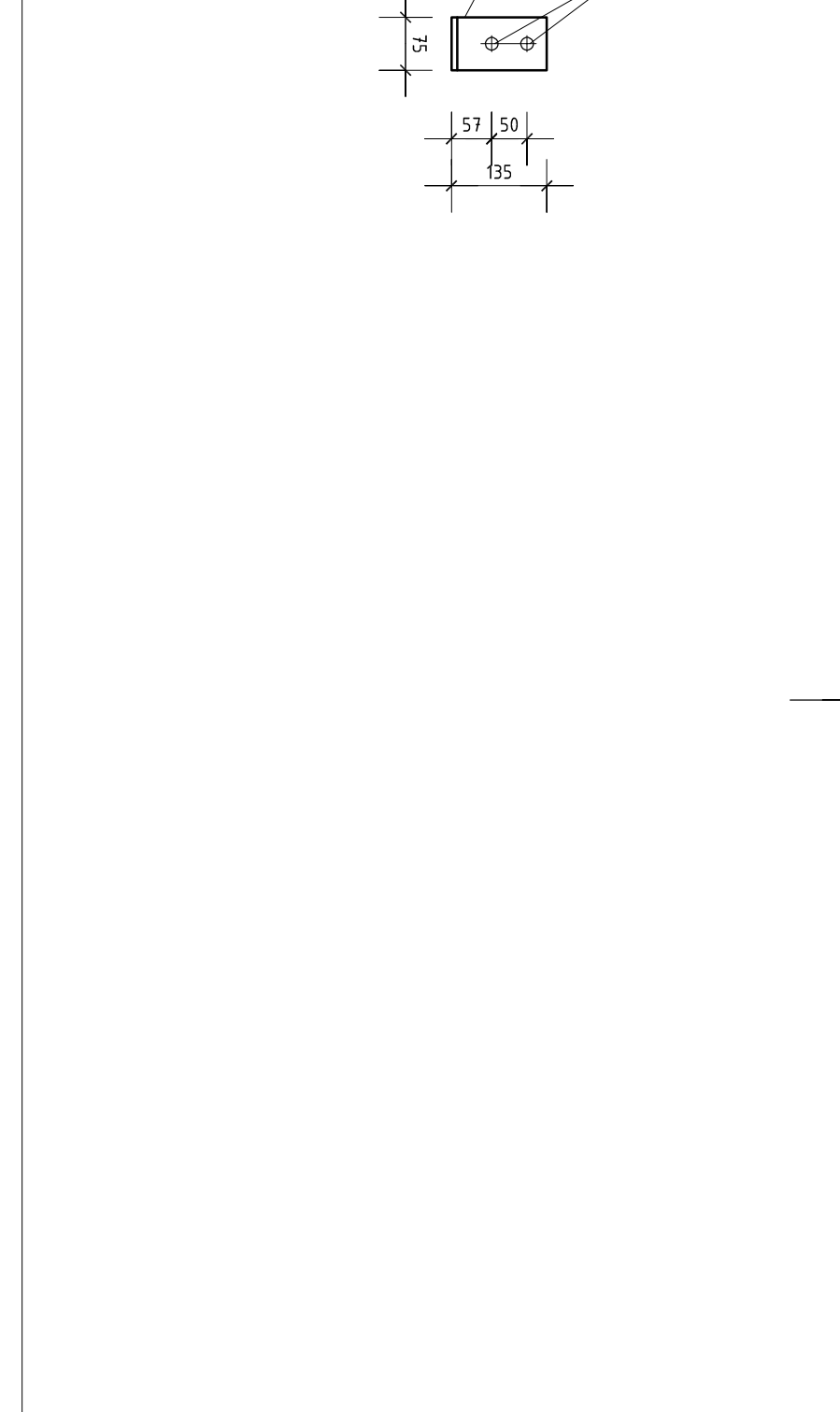
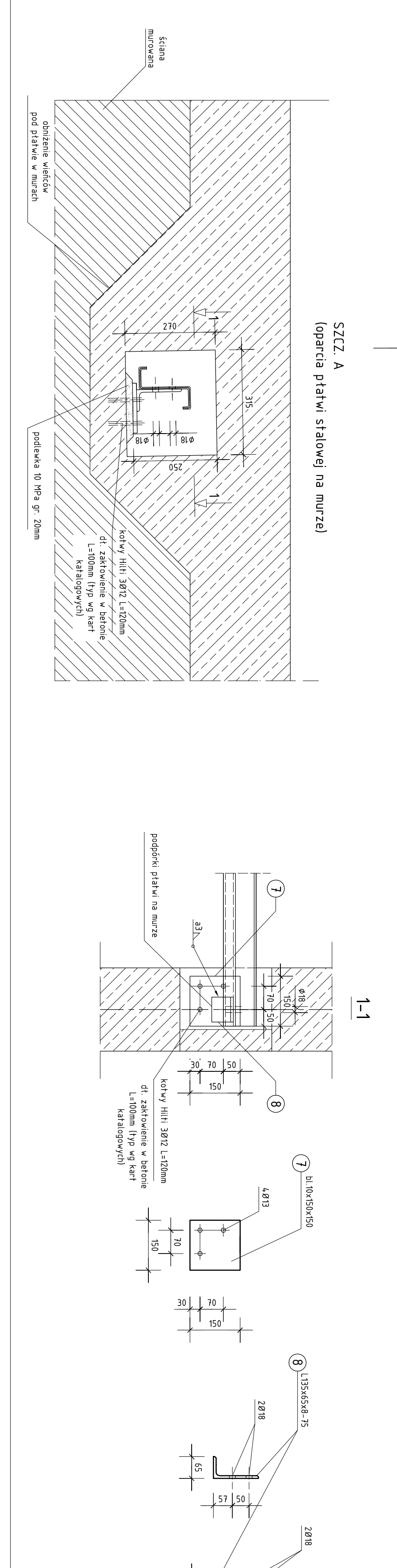
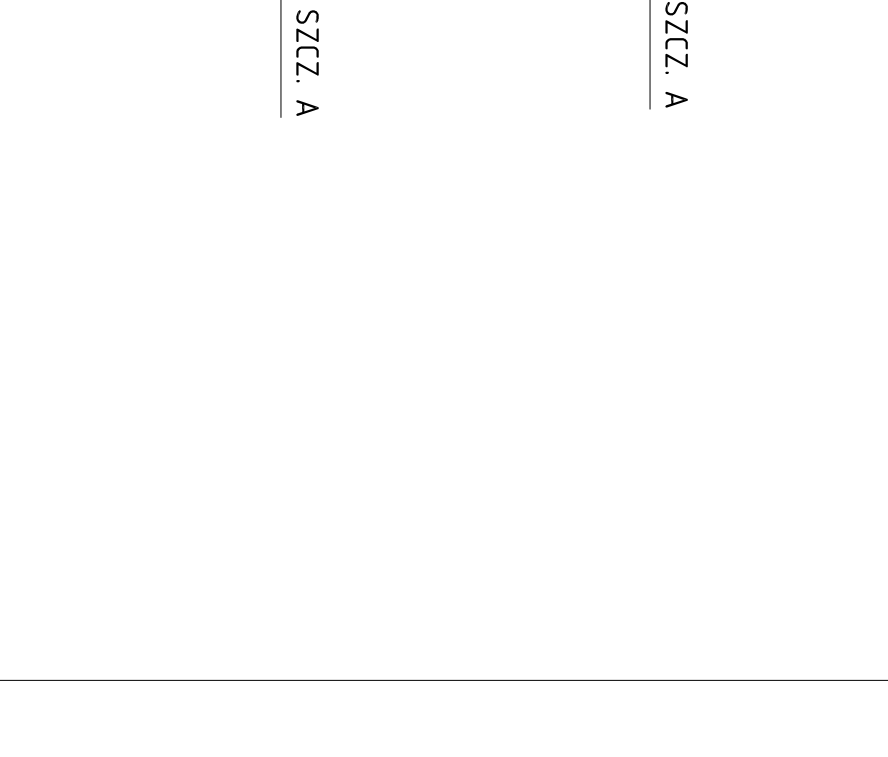
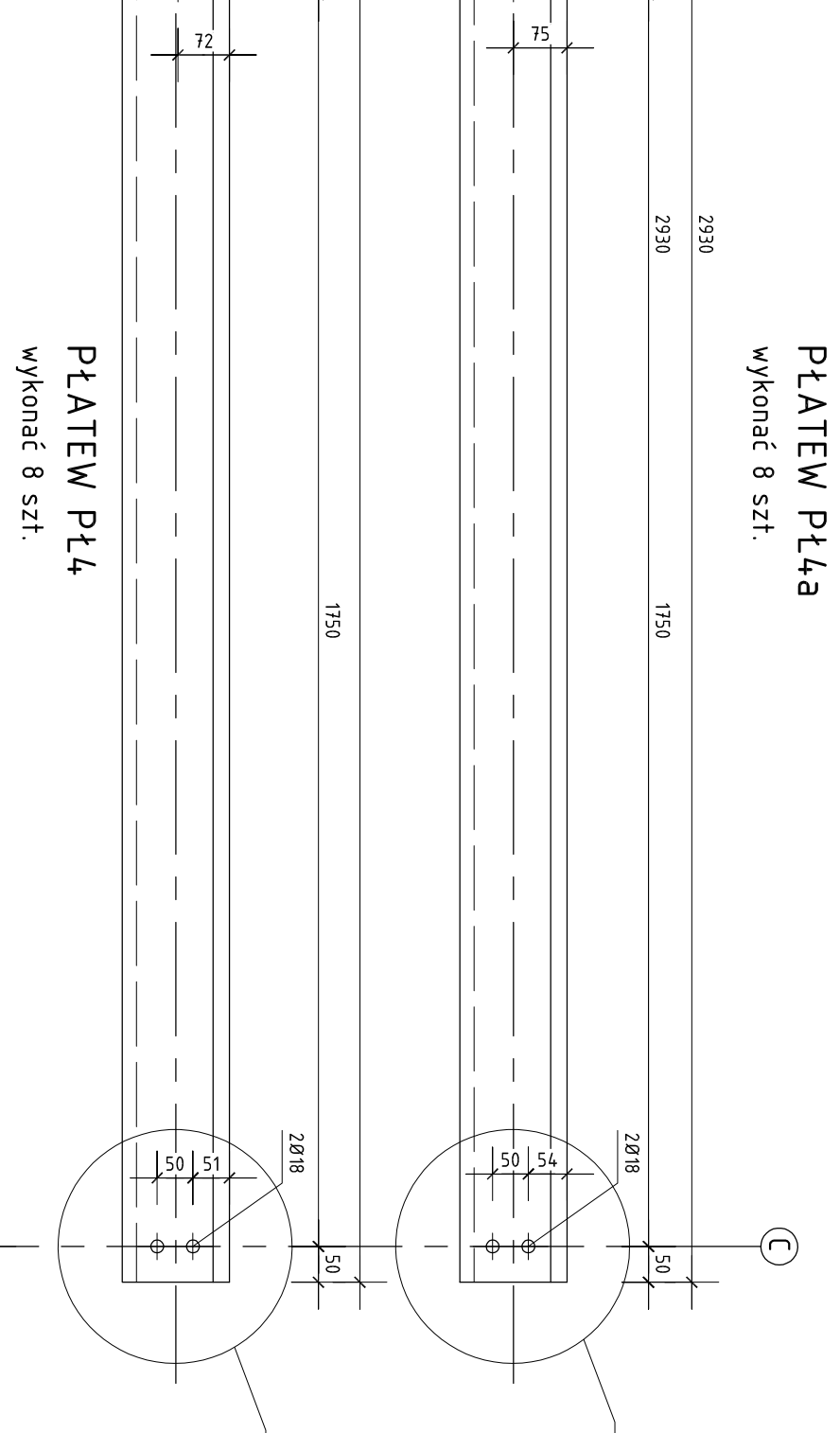
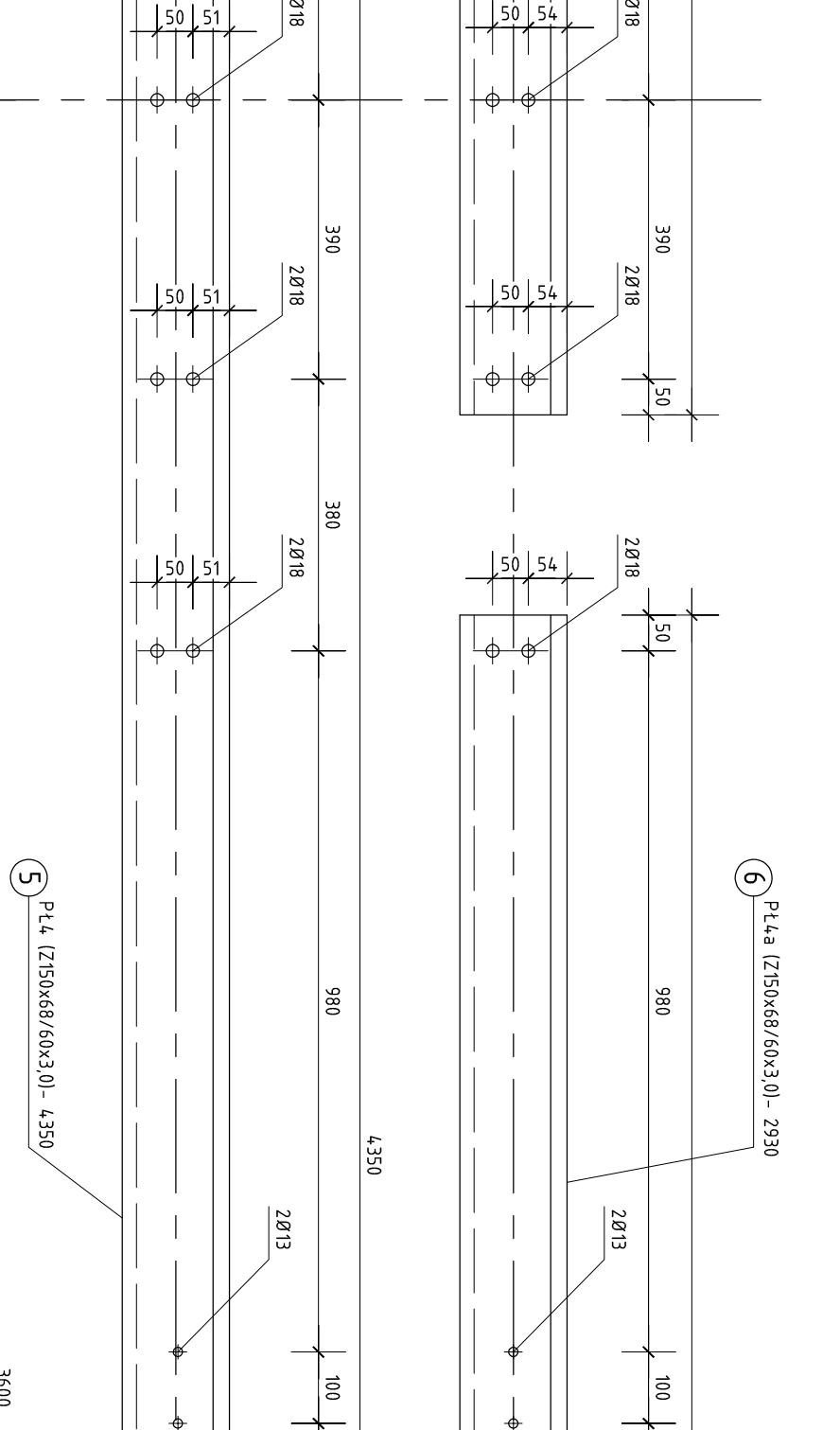
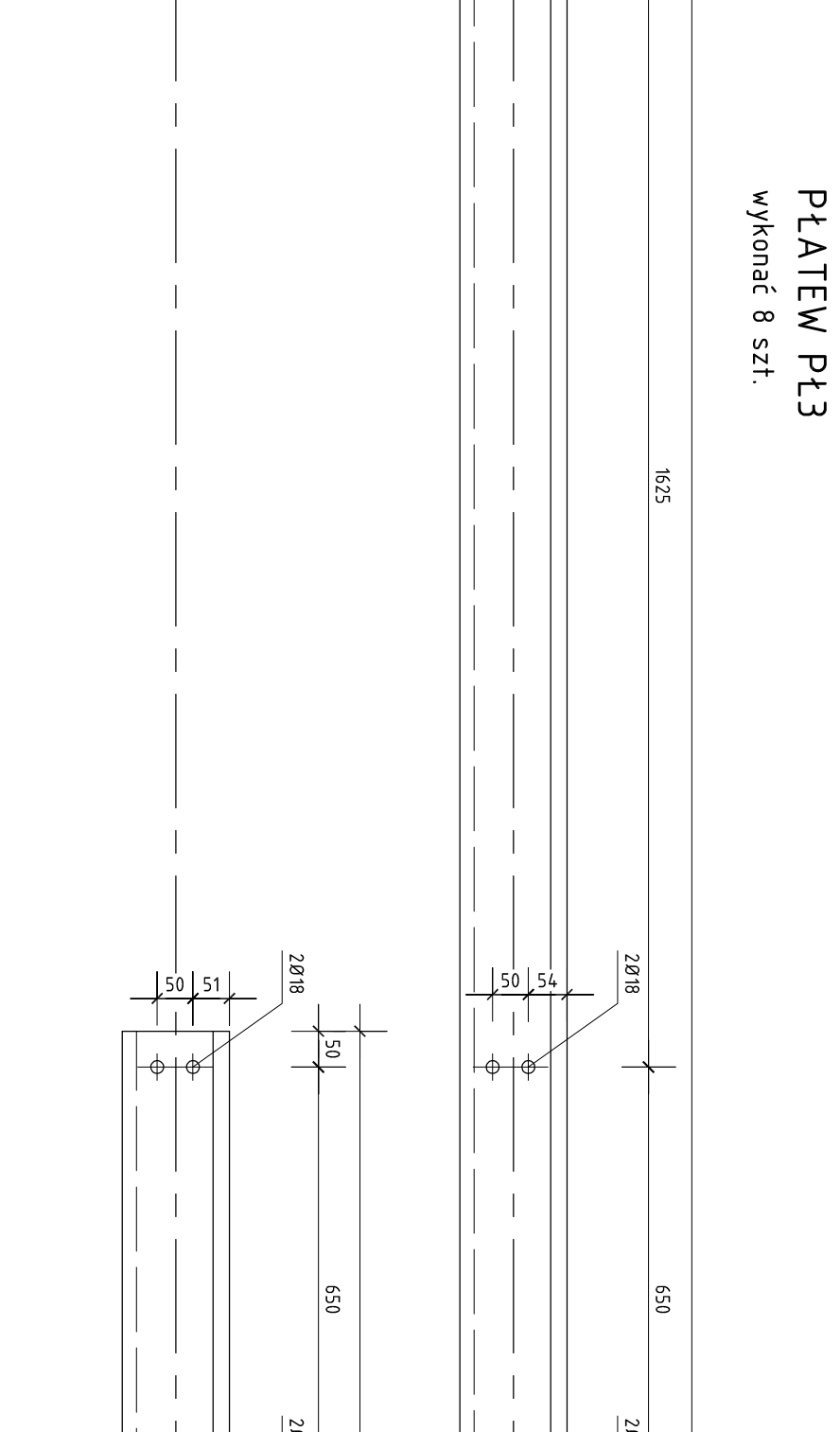
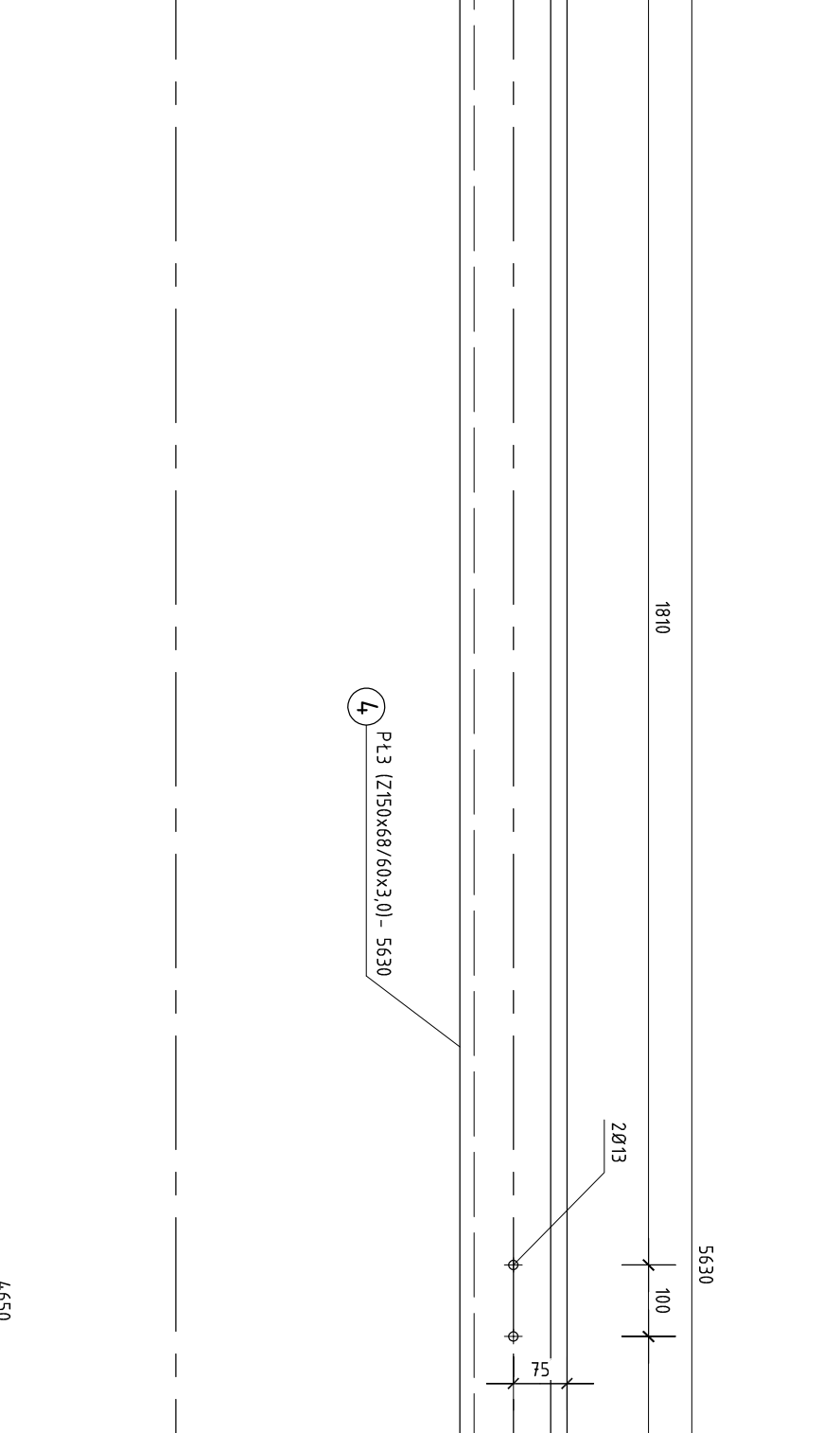
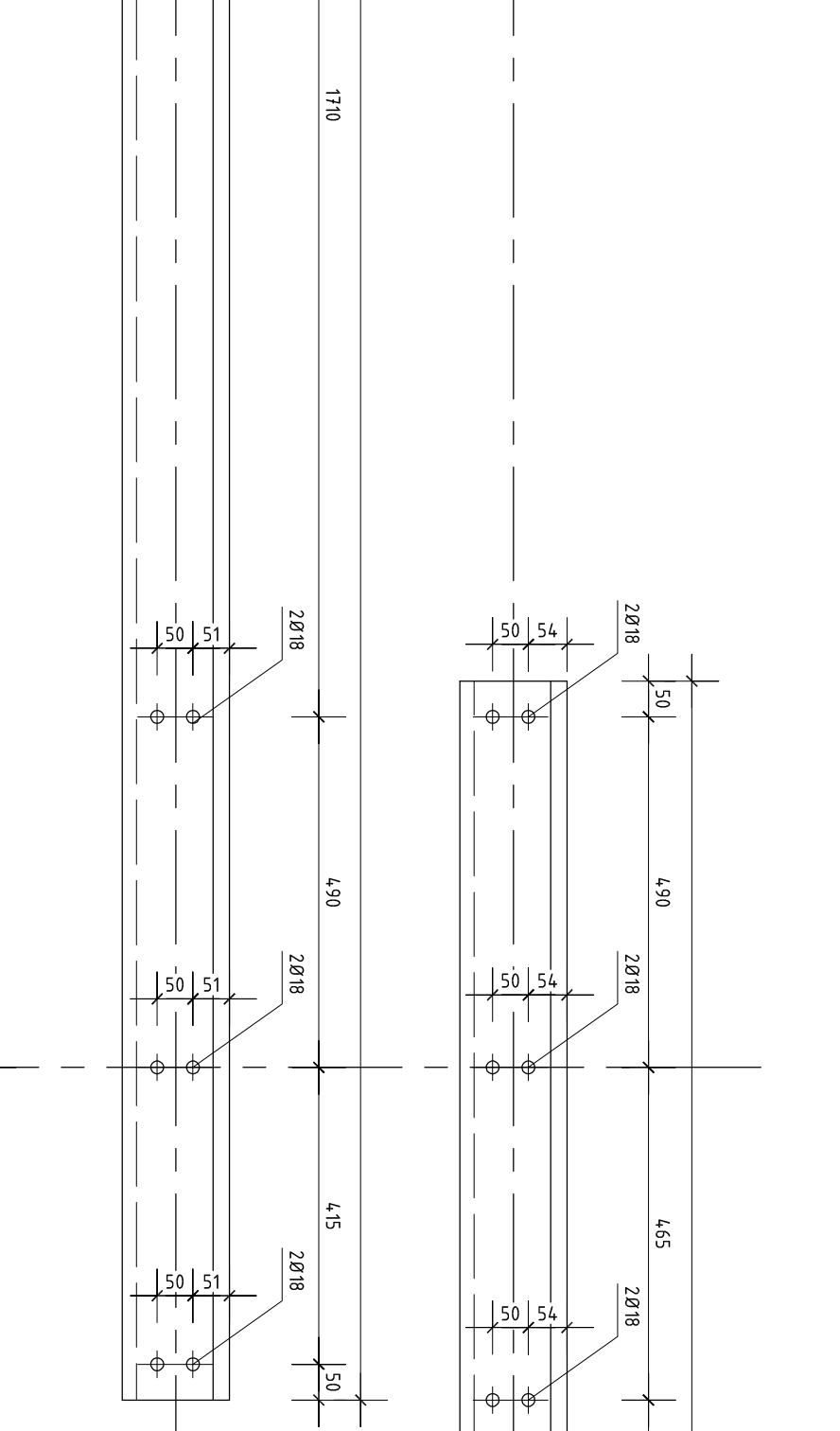
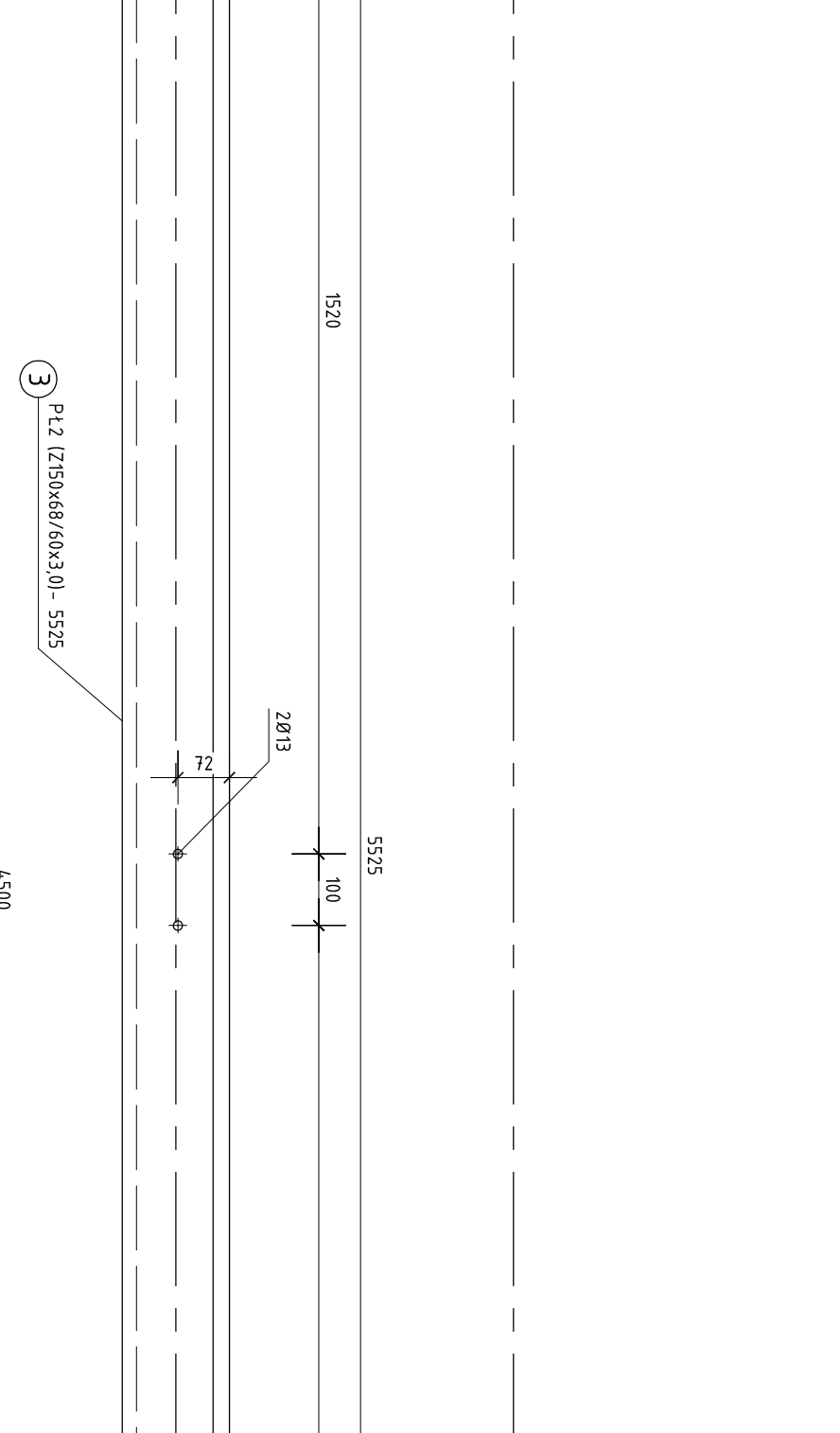
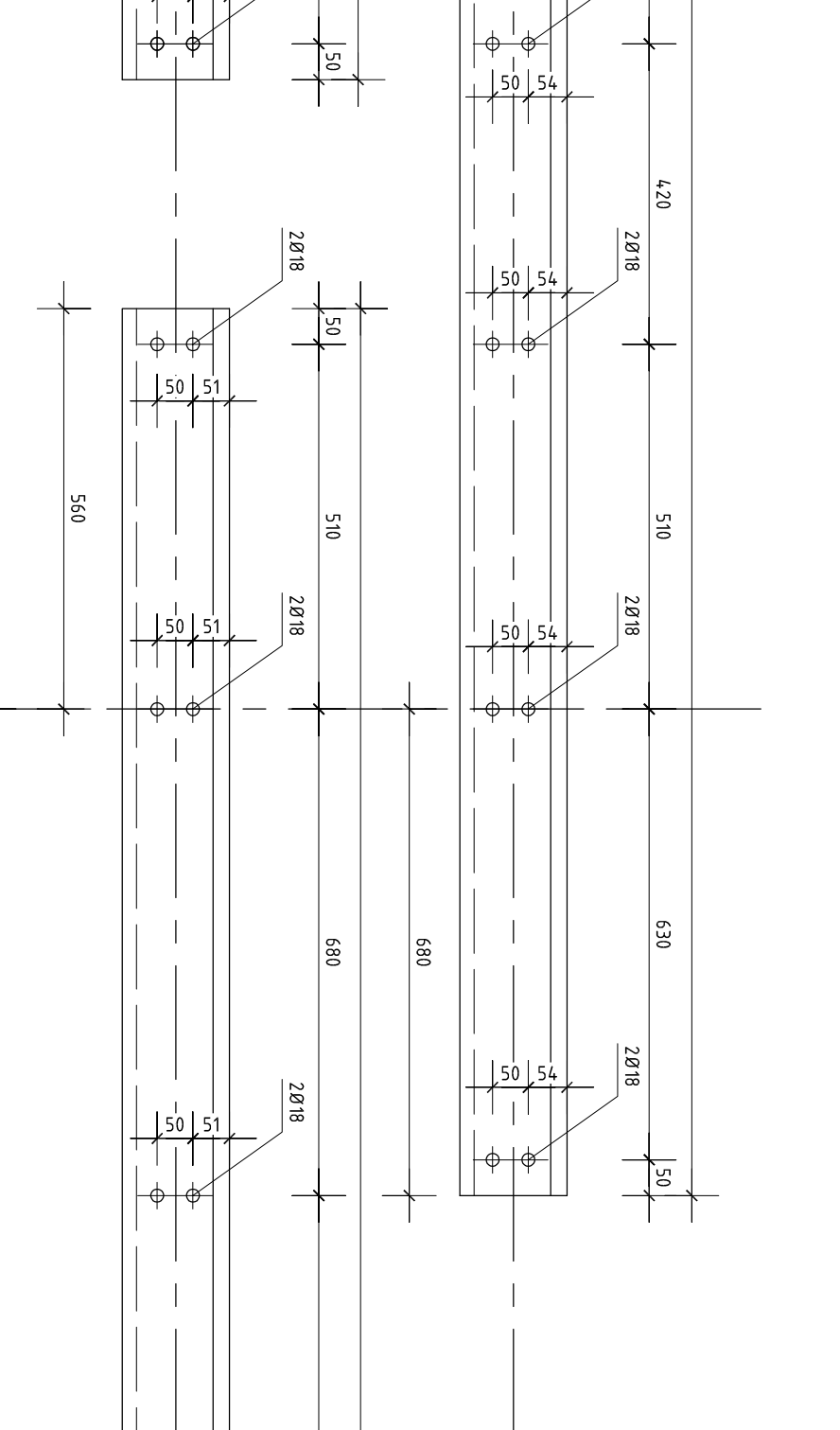
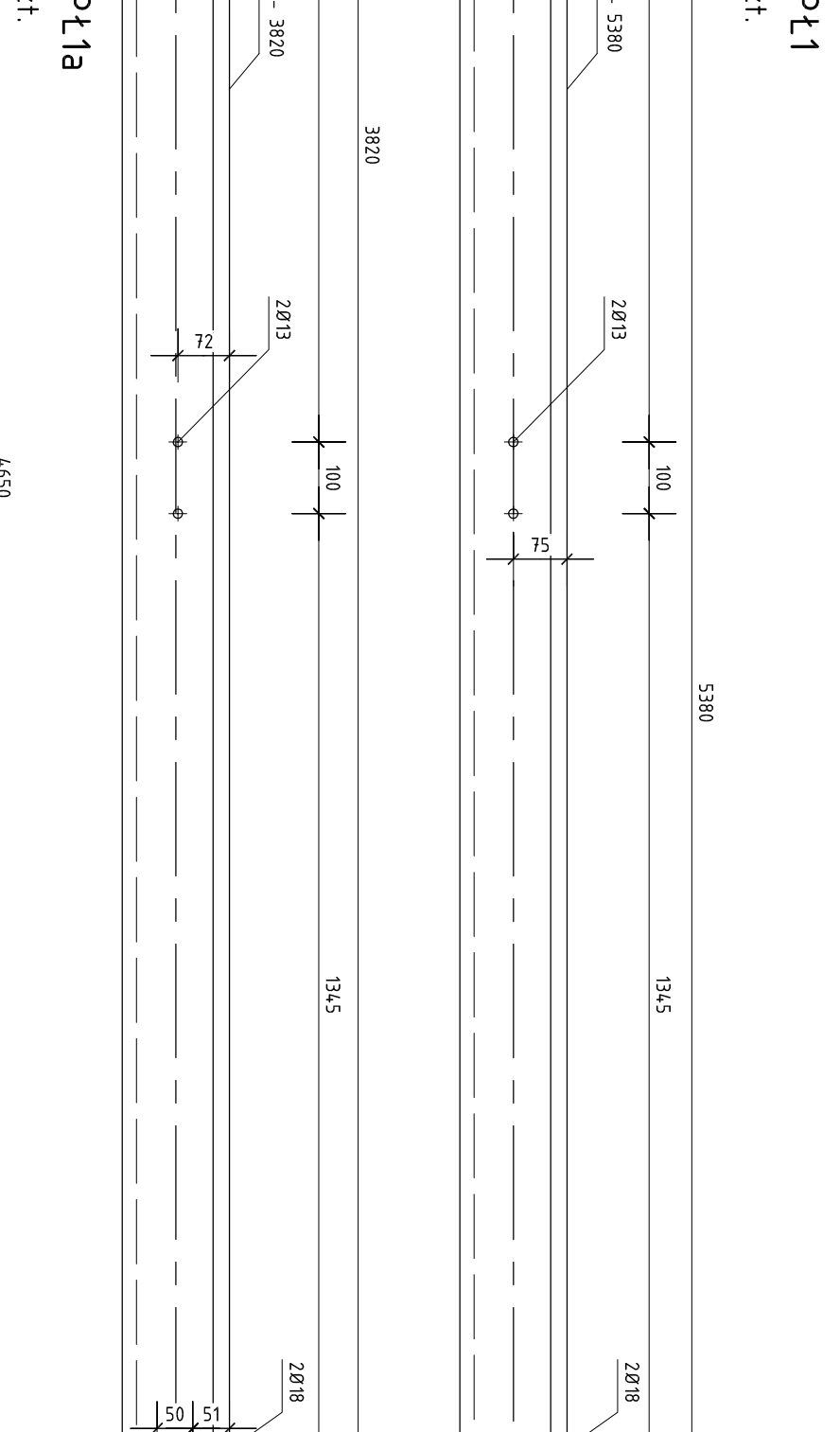
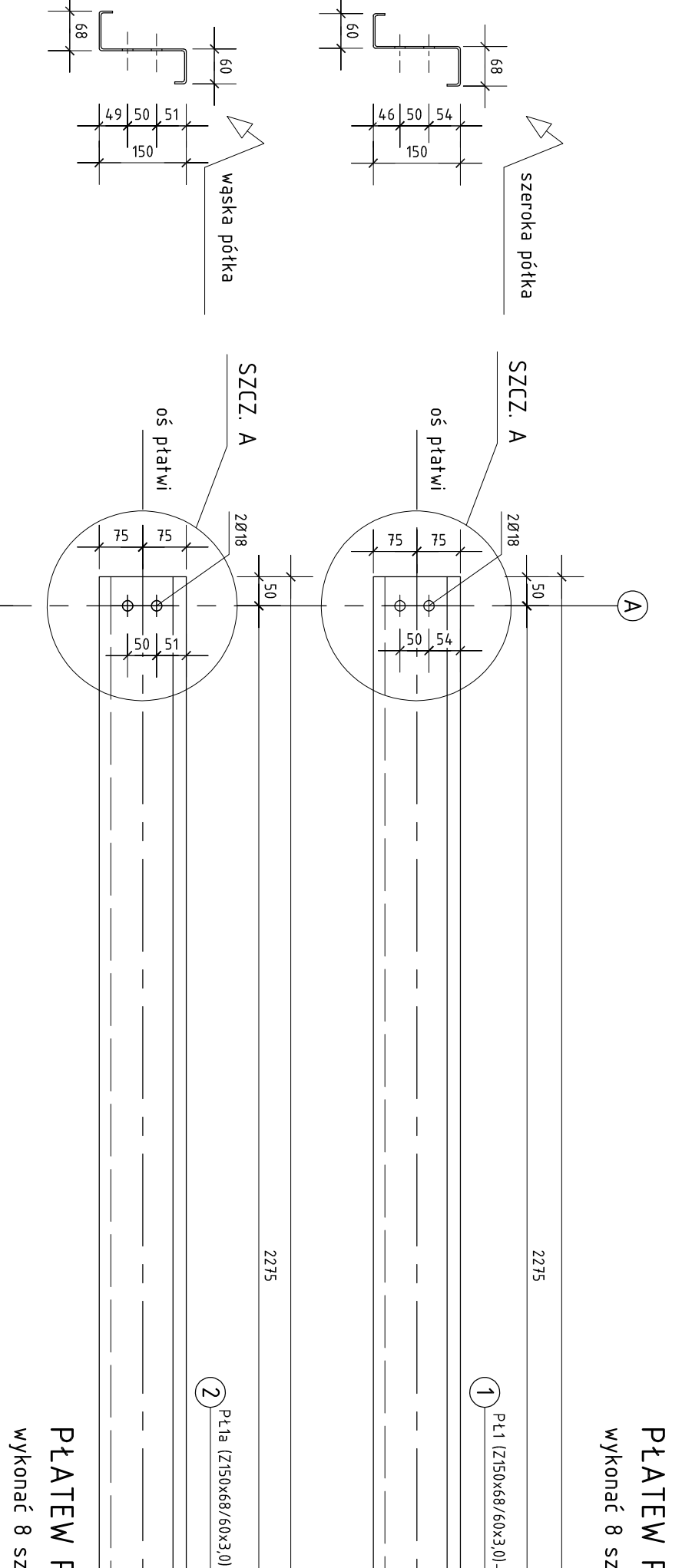
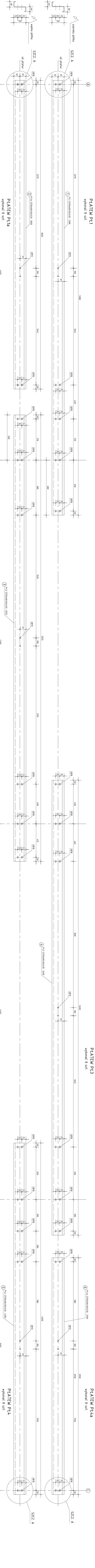


SCHEMAT MONTAŻOWY PŁATWI (PŁ1 + PŁ4) – WIDOK A-A Z BOKU 1:10



UWAGI
 Do pozostałych przekrojów wykonanych zgodnie z rys. 8/8
UWAGI
 1. Wykonanie robót zgodnie z projektem.
 2. Wykonanie robót zgodnie z projektem.
SZKICZ
 USTWIENIENIE - PATRZ RYS. NR KW-02
PROJEKT
 mgr inż. SŁAWOMIR PROJEKT
 mgr inż. SŁAWOMIR PROJEKT
**PROJEKT WYKONAWCZY BUDYNKU OCHRONIENIEJ STRAŻY
 POZAMIE PRZY UL. MICHAŁA DEBZYŃSKIEGO W IRLĘDZIE**
 KONTAKTOWA STRONA ZŁAZENIA OSOBY
 PŁATEM PŁ1, PŁ2, PŁ3, PŁ4, PŁ5
 1:10 8/7 NS-4
 11/2015 2015