

Arkusz: R+PŚr



**GRUPA POMIAROWA
ZIELONA GÓRA**

Nr ark: P- 8106 / 2014

65-705 Zielona Góra
ul. Narłowa 3

tel. (068) 3295417, 3240762
fax. (068) 3255212

POMIARY GEOFIZYCZNE

Otwór:

ZIP-5

Rejon:

Górnośląskie Zagłębie Węglowe

Odcinek pomiarowy:

0.0 - 740.0 m

Wysokość npm.:

b.d. m

Skala głębokości:

1 : 200

Data pomiarów:

10.03.2014

Wysokość podbudowy:

0.5 m

Grupa pomiarowa:

TGP-Z

Głębokość otw. wg pomiaru:

740.0 m

Kierownik:

mgr inż. J.Puchacewicz

Głębokość otw. wg wierceń:

740.0 m

Operatorzy:

T.Hanus

Średnica otworu:

120 mm

Typ laborat. geofizycznego:

GeoVista

Głębokość rur. wg pomiaru:

108.0 m

Typ kabla:

3/16" coaxial

Głębokość rur. wg wierceń:

108.0 m

Opracowujący:

mgr inż. T.Fryziak

Średnica wewn. rur:

5 1/2 cale
131 mm

Weryfikator:

inż. R. Burliga

Parametry płuczki:

Rodzaj płuczki:

bentonitowo-polimerowa

Wiskozja:

38 s/1000cm³

Gęstość:

1.02 g/cm³

Zapiaszczenie:

b.d. %

Wytrzymałość strukt.:

b.d. j.szir.

Oporność płuczki:

3.717 omm

Zasolenie:

b.d. g/l

w temperaturze:

17.5 st C

Filtracja:

16.0 cm³

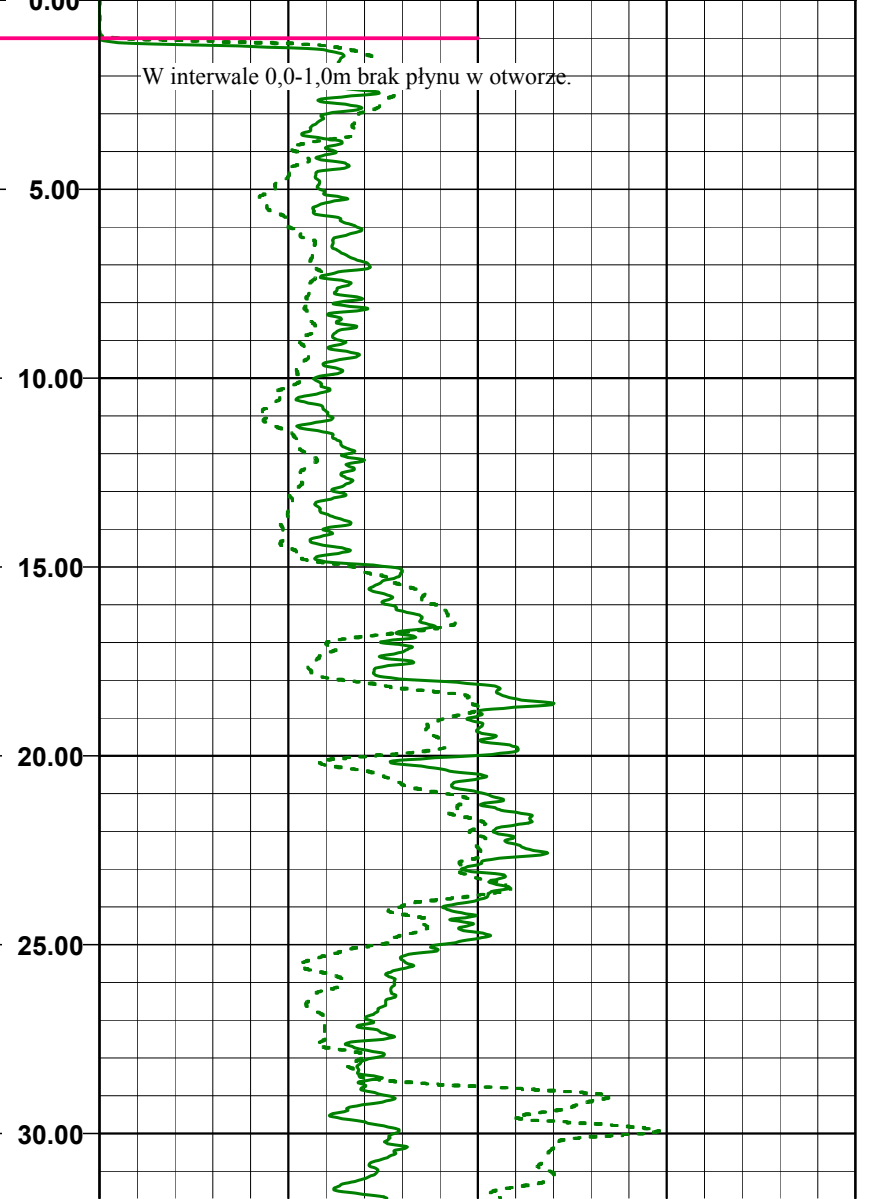
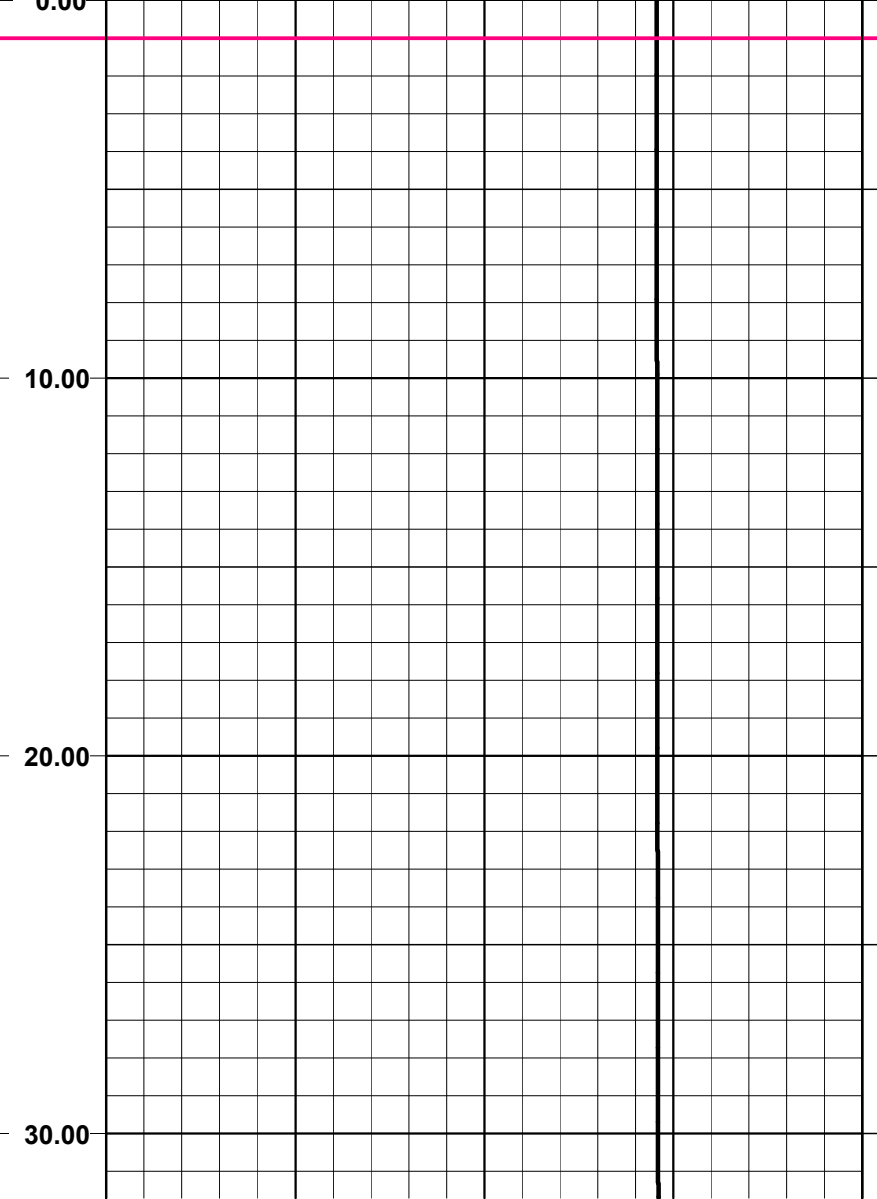
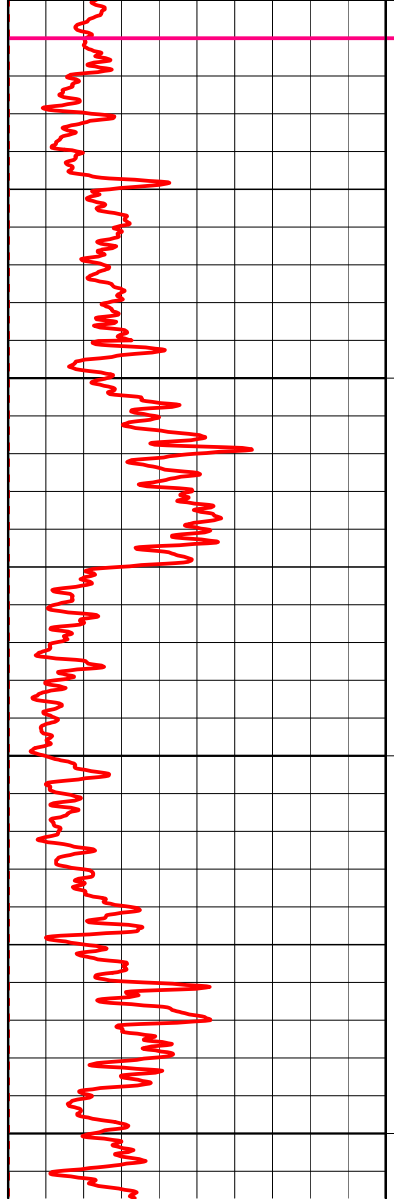
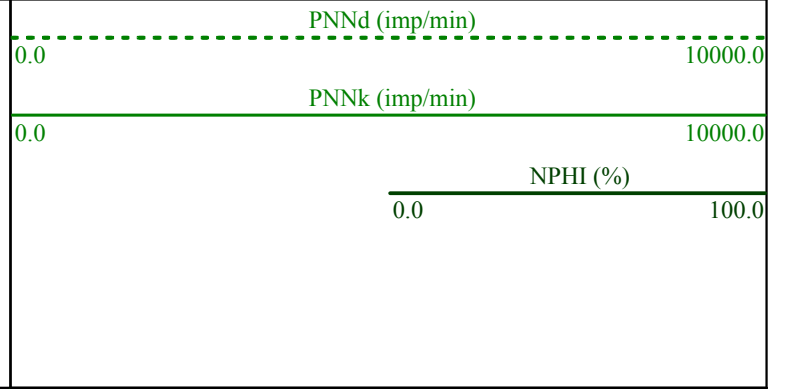
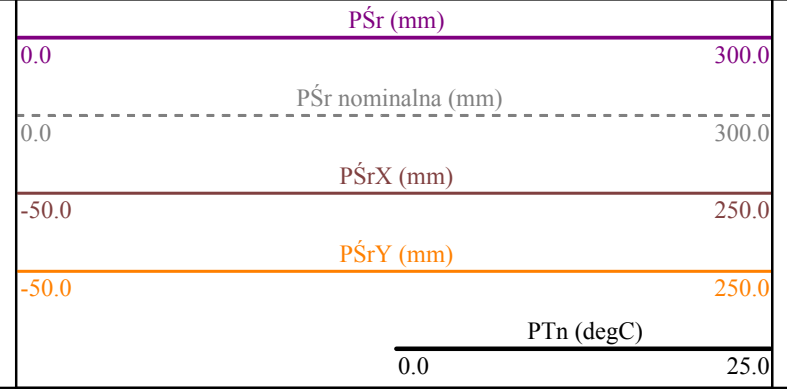
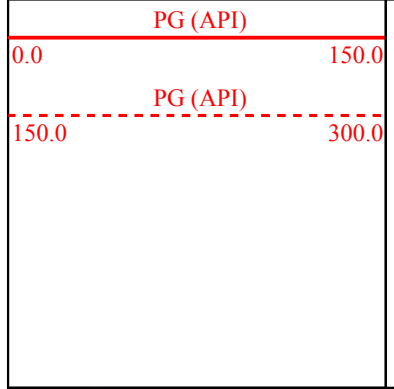
Temperatura spodu otworu:

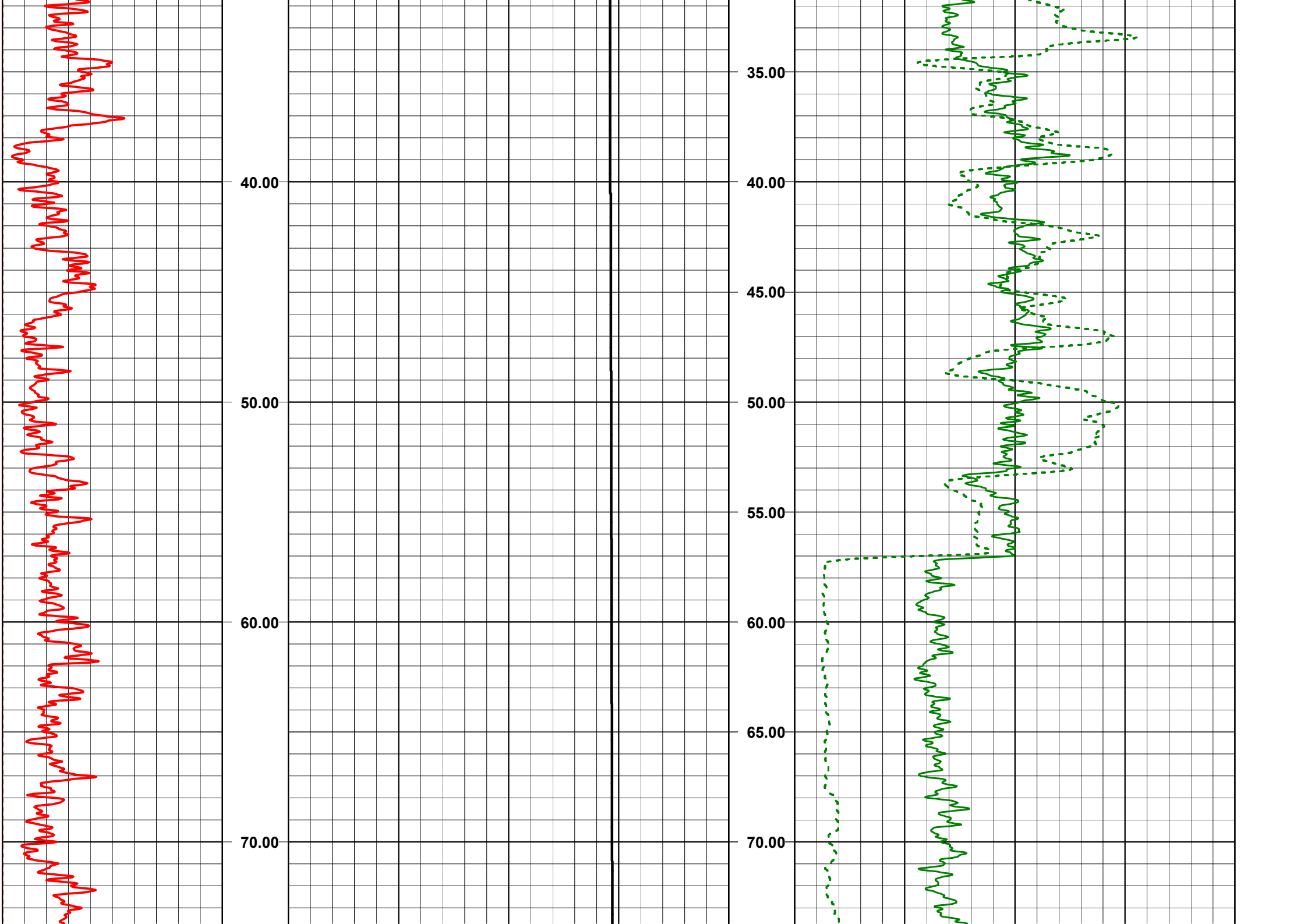
21.0 st C

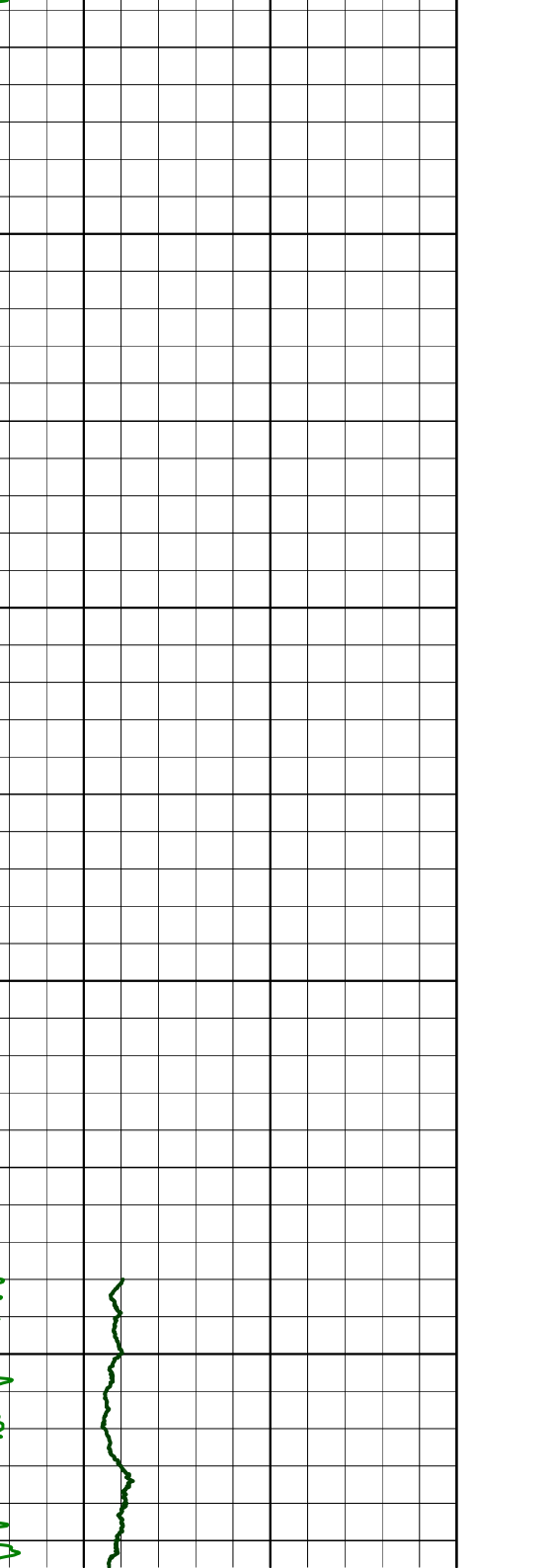
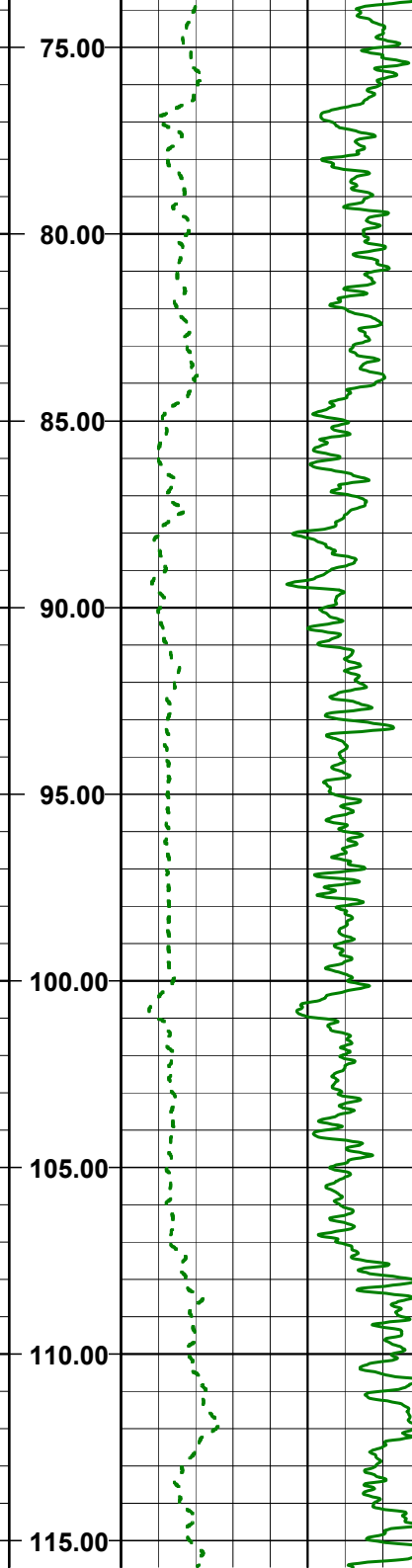
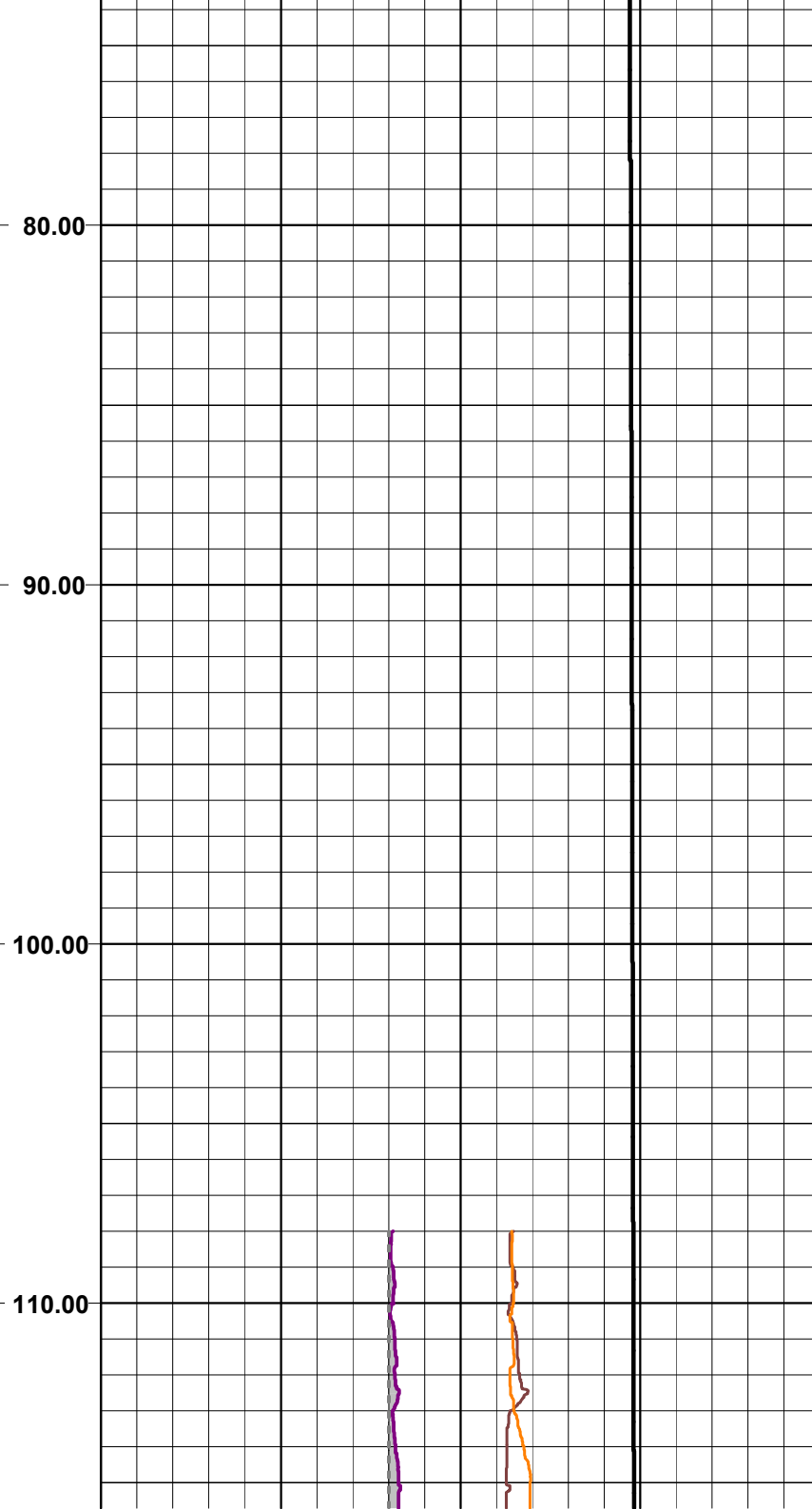
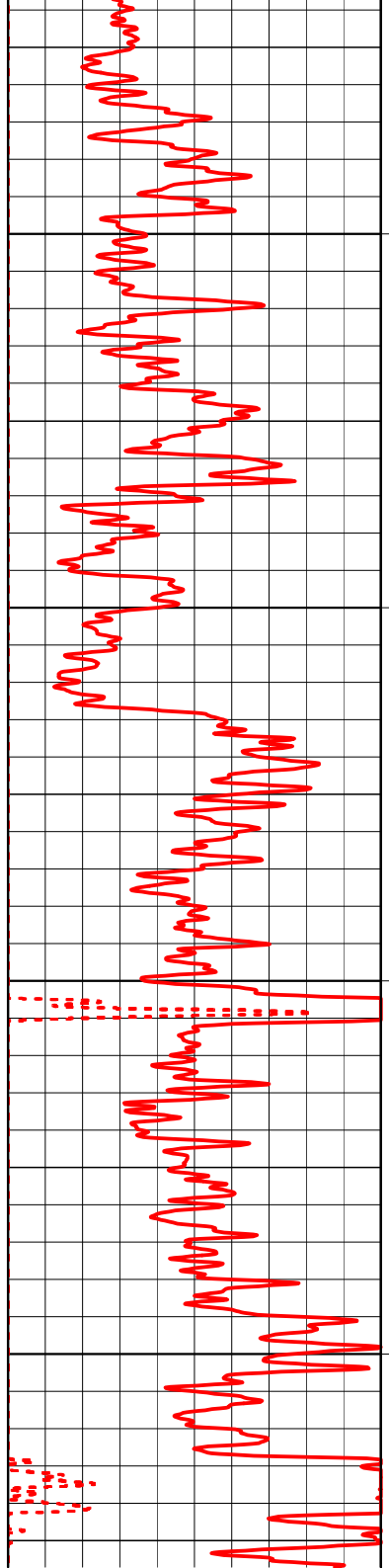
Profilowanie krzywizny - odcinek pomiarowy: 0,0 - 738,0 m

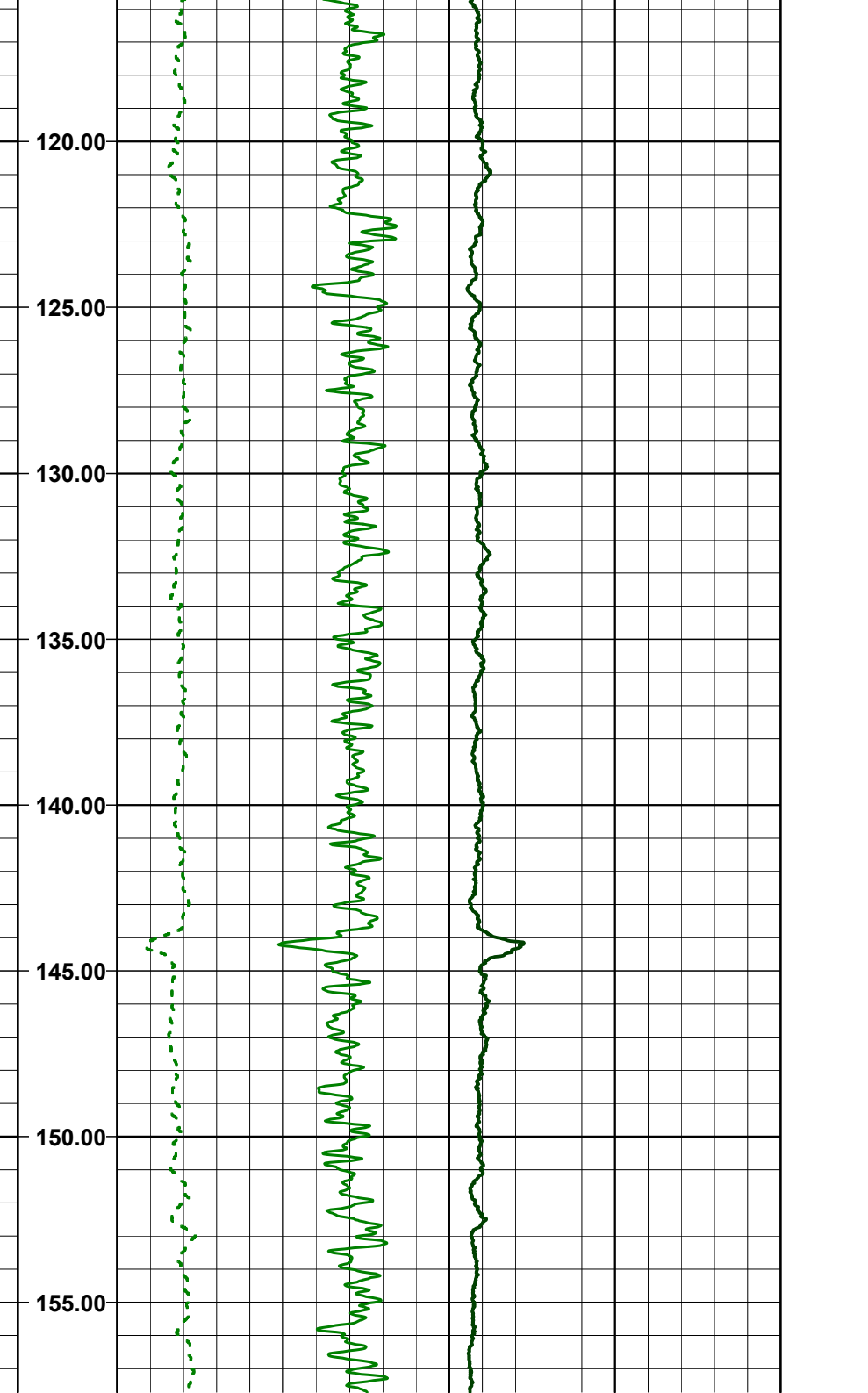
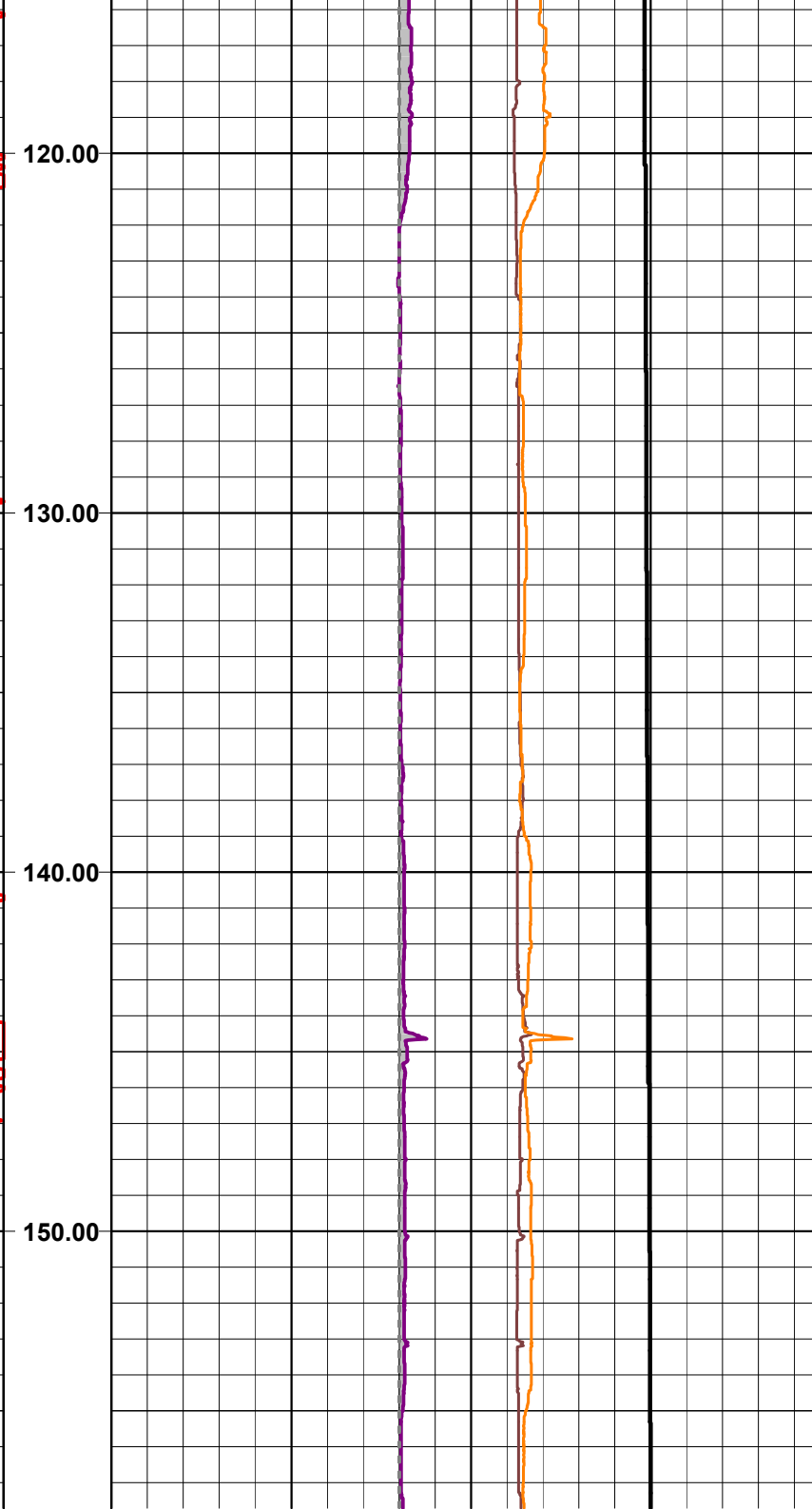
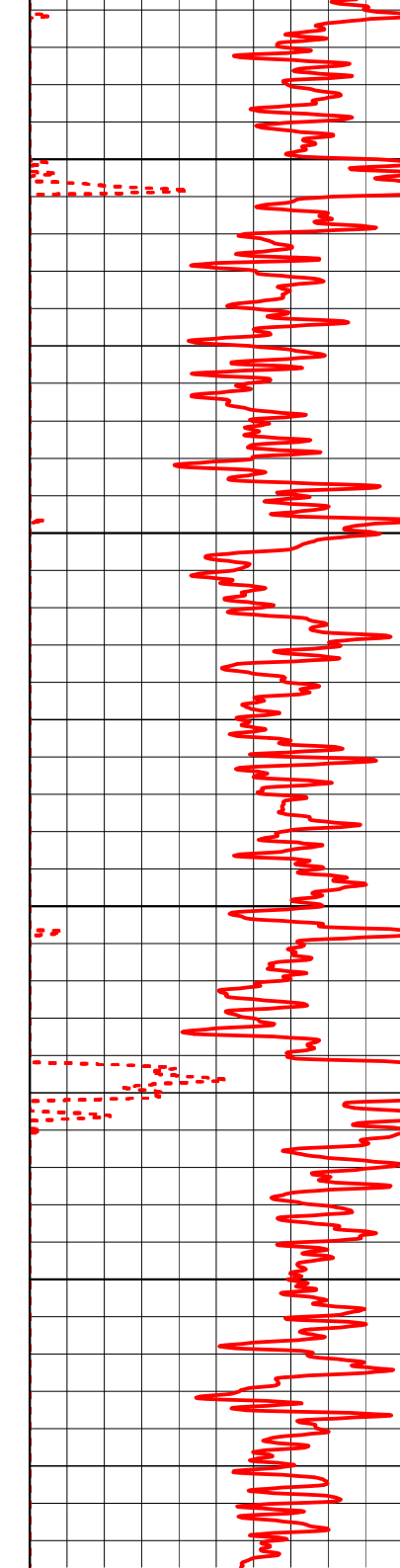
Arkusz "Inklinometr" P-8105 / 2014

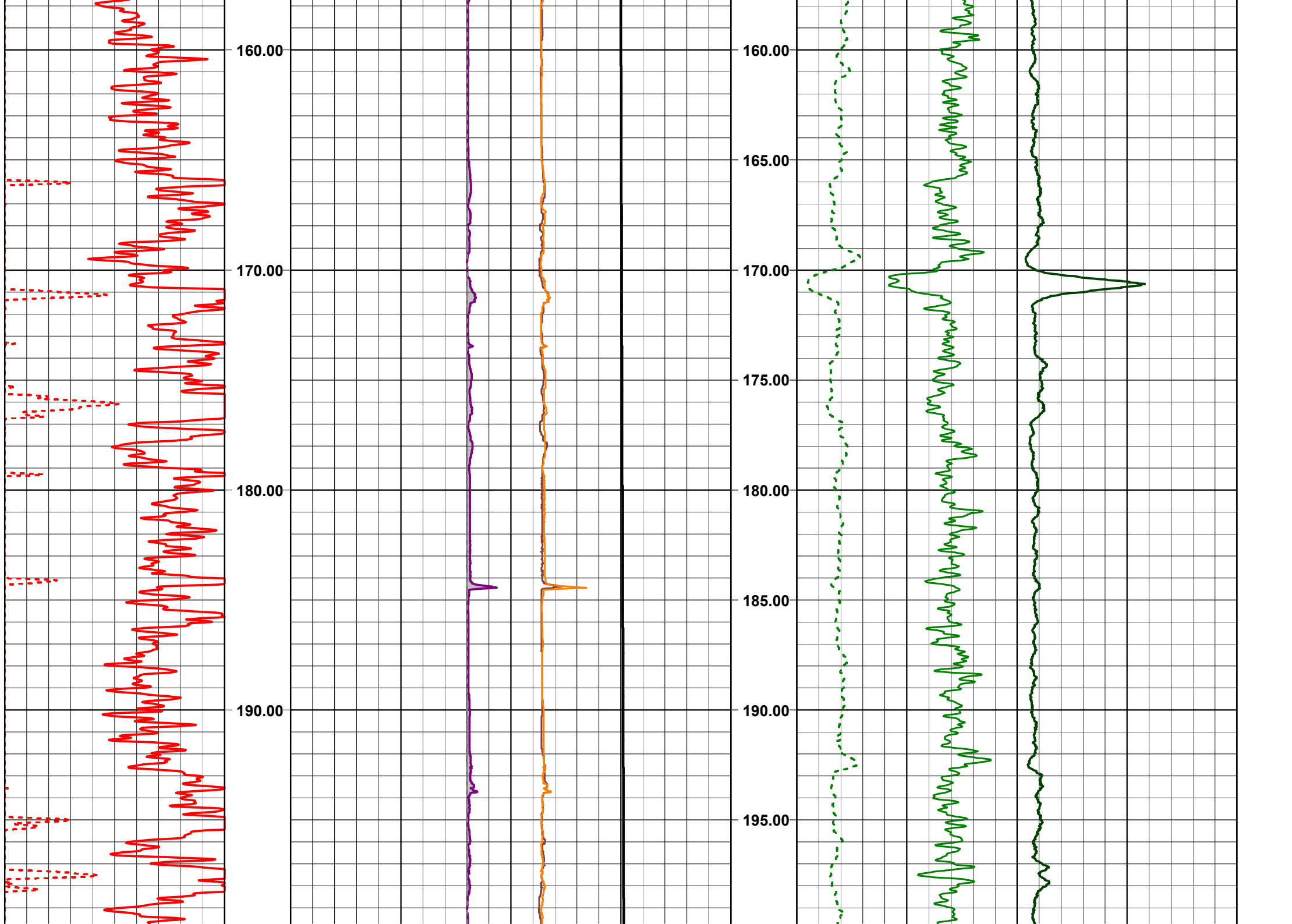
Krzywa pomiarowa	PG	NPHI	PNND, PNNK	PT n	PŚr, PŚrX, PŚrY
Typ sondy	NGRS	DNNS	DNNS	TCME	2ACS
Prędkość pomiaru [m/min]	5,0	5,0	5,0	5,0	5,0
Rozstaw sondy [m]	-	-	-	-	-
Interwał [m]	od	0,0	108,0	0,0	108,0
	do	740,0	675,0	740,0	740,0

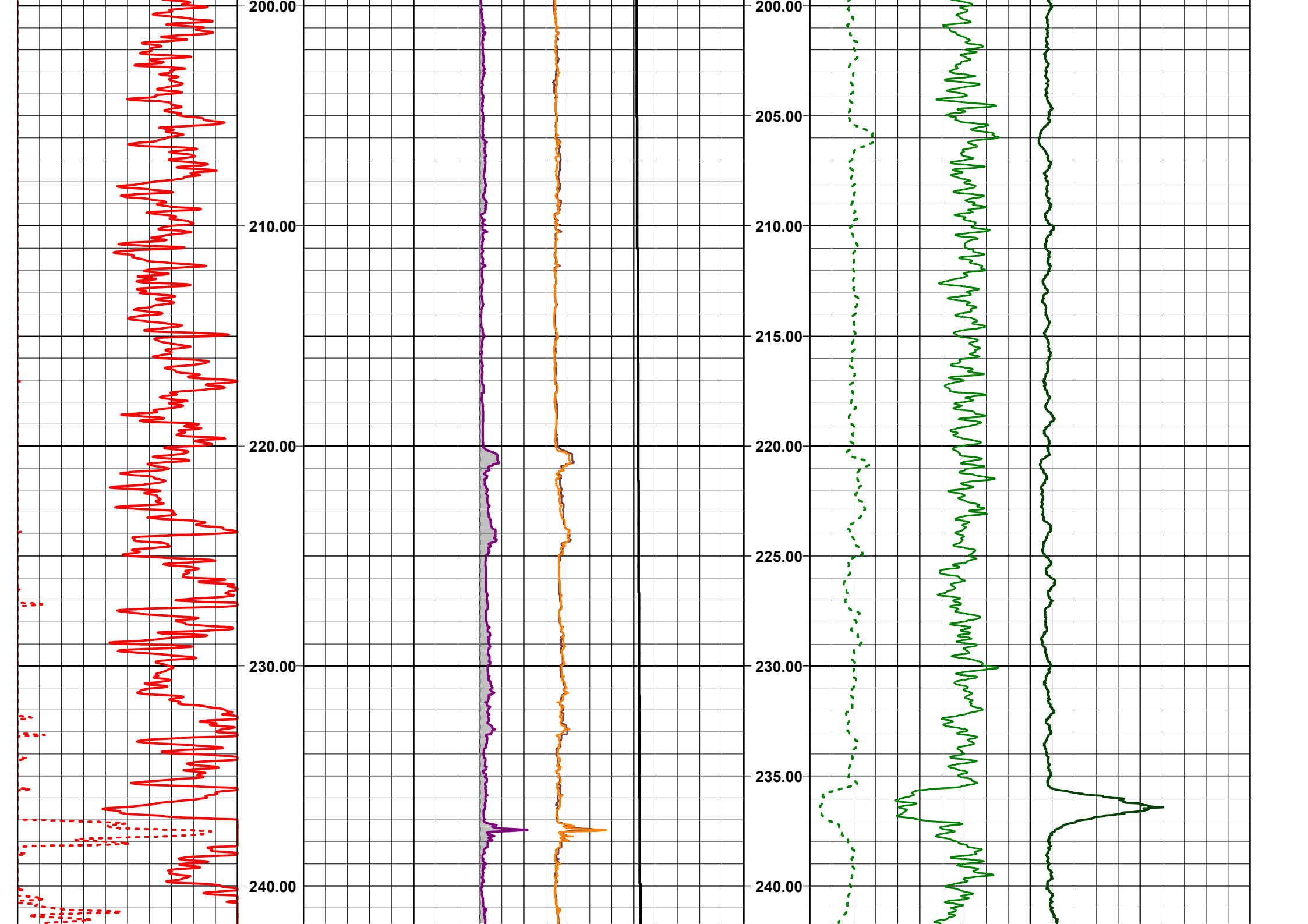


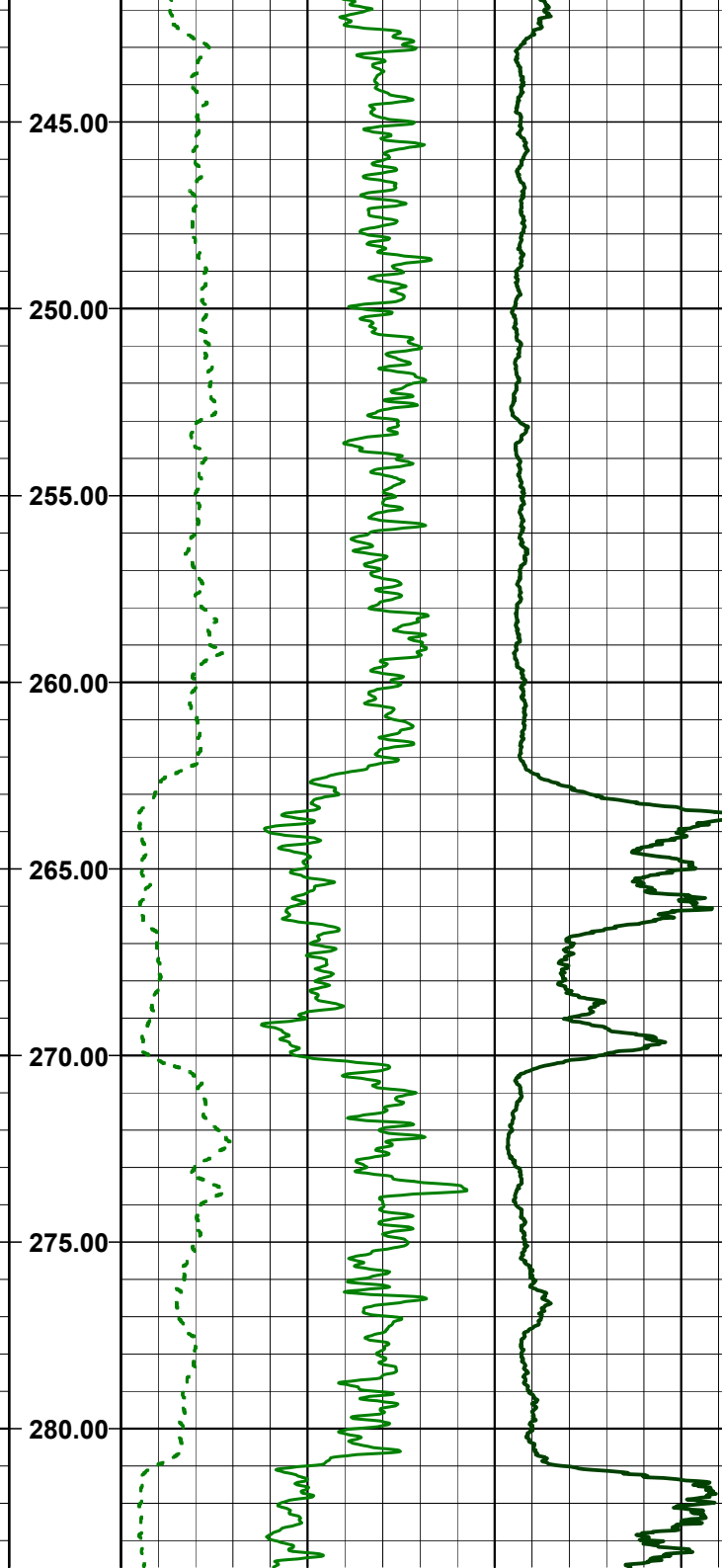
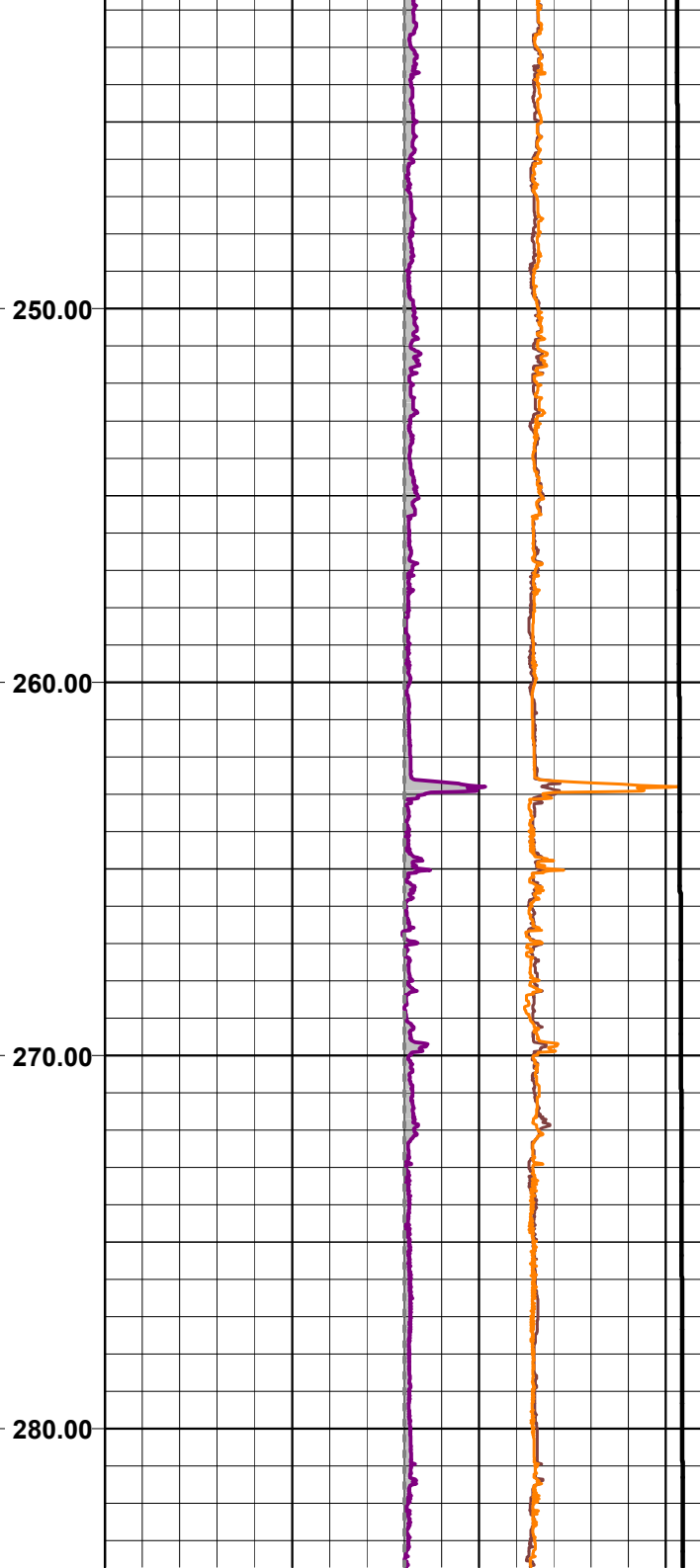
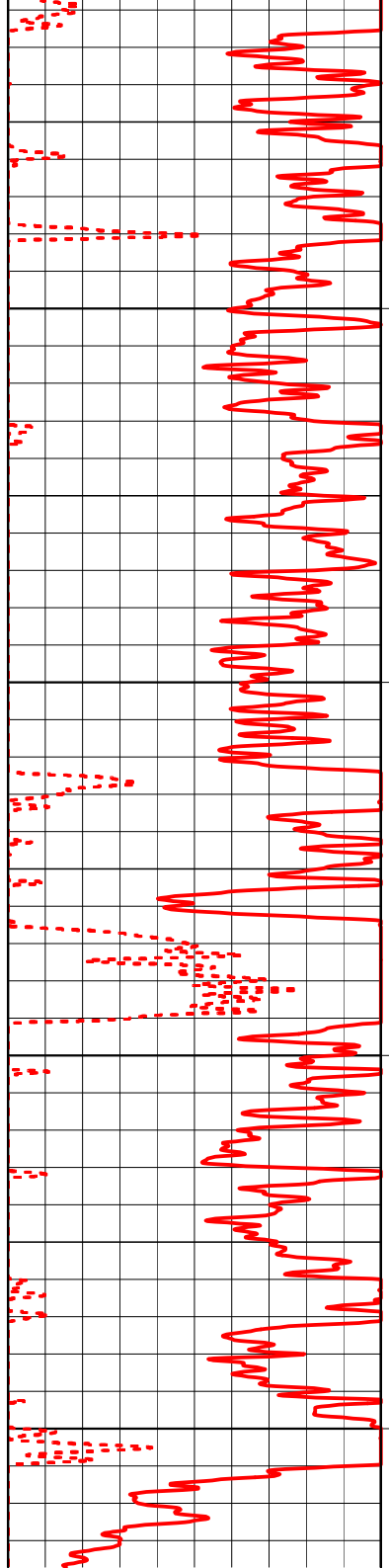


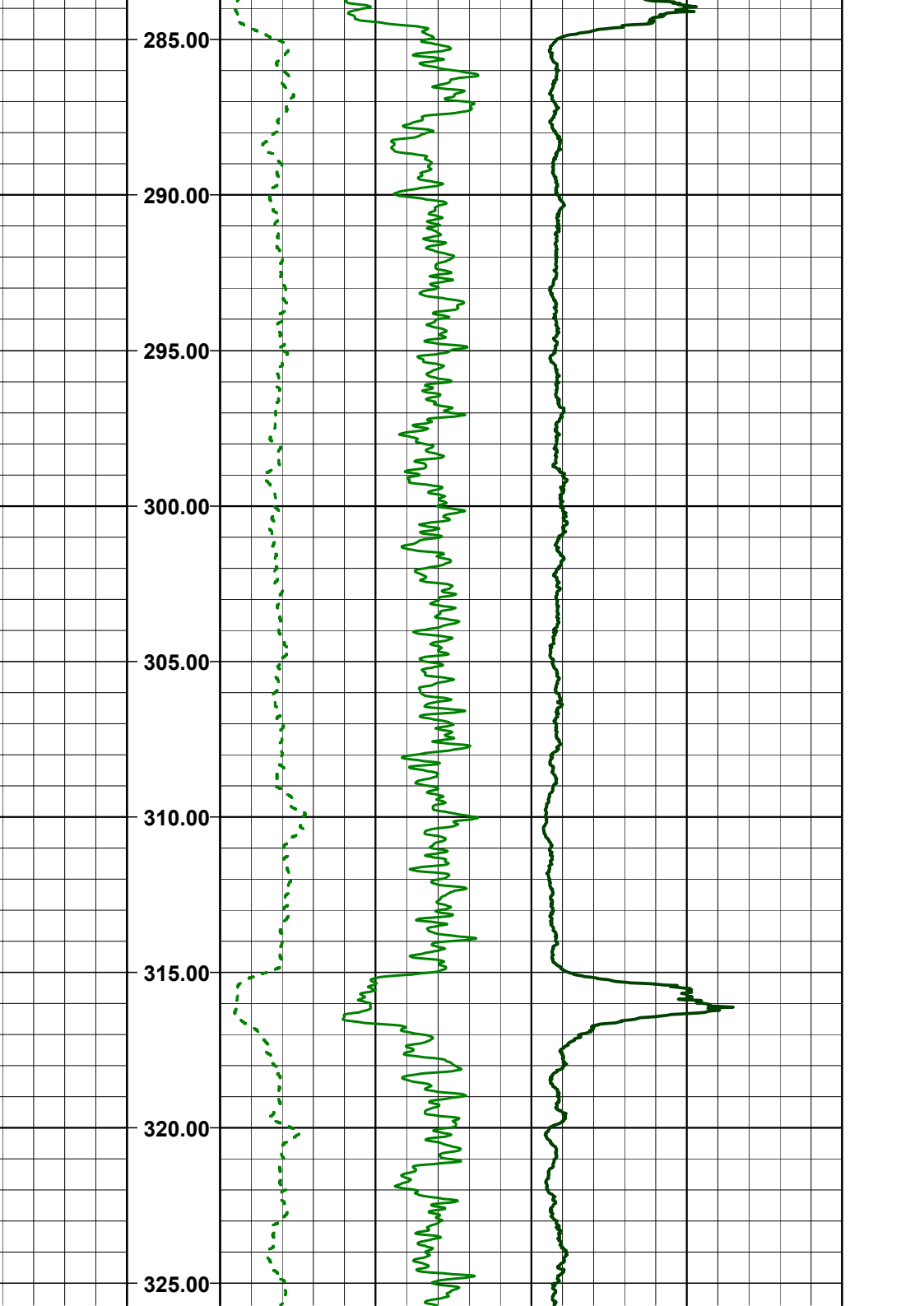
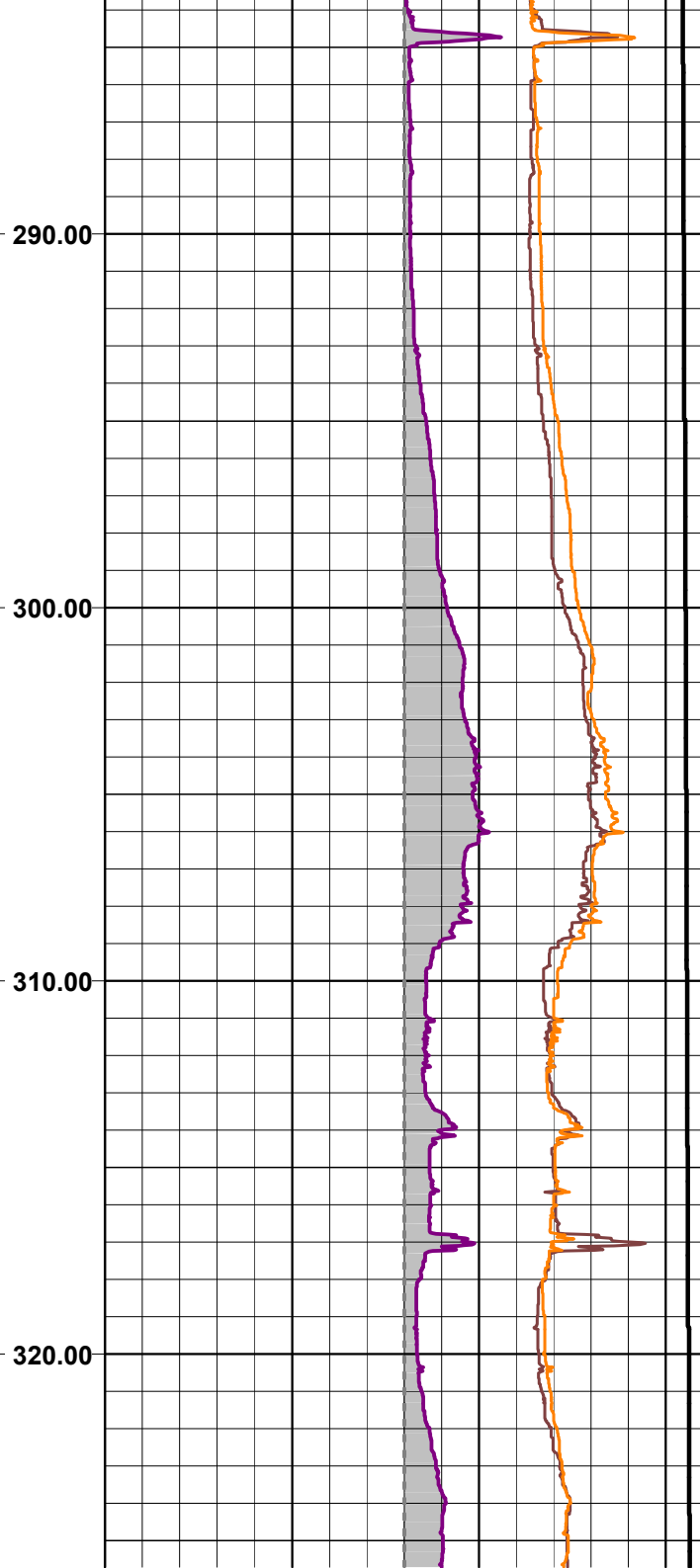
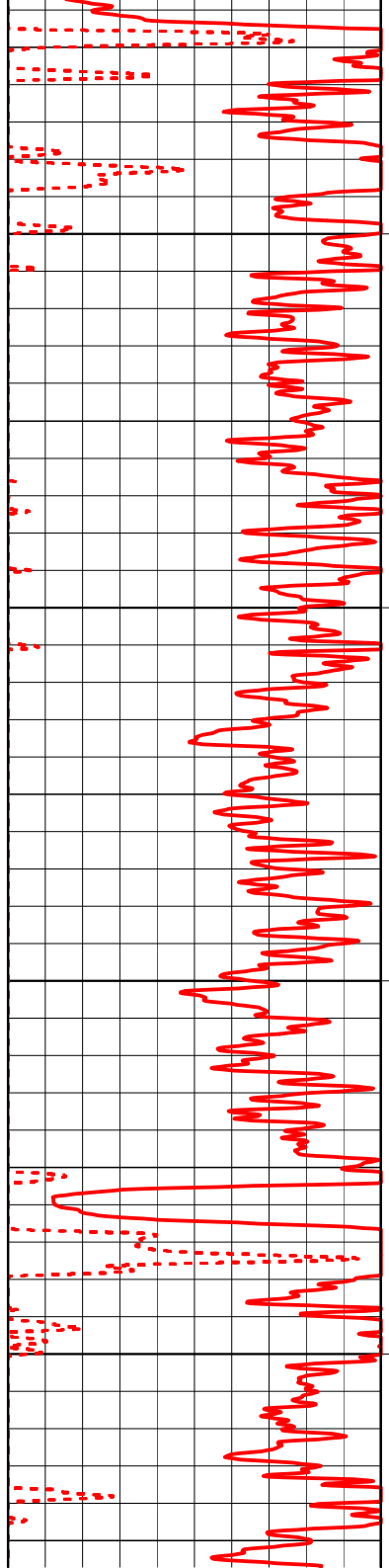


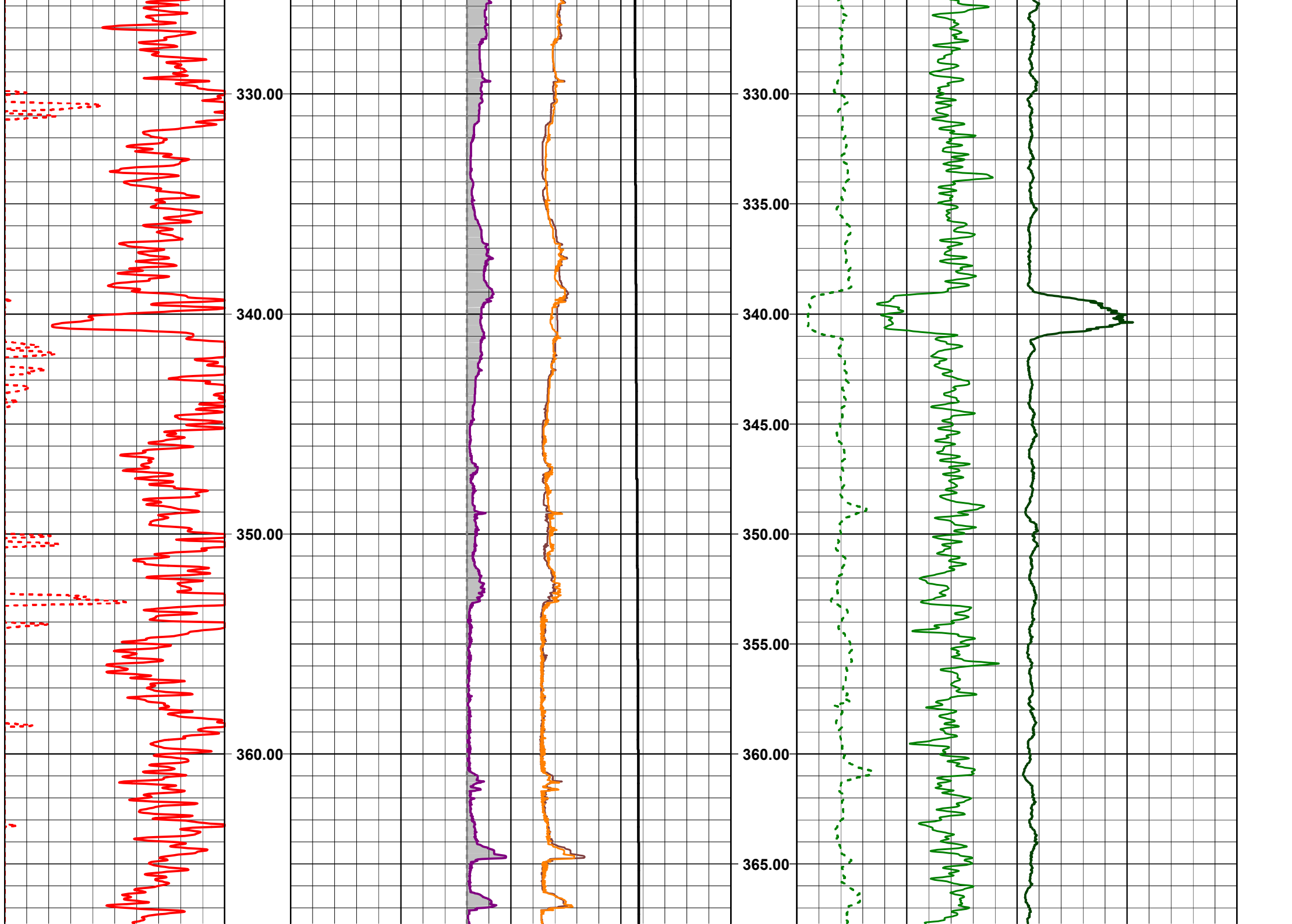


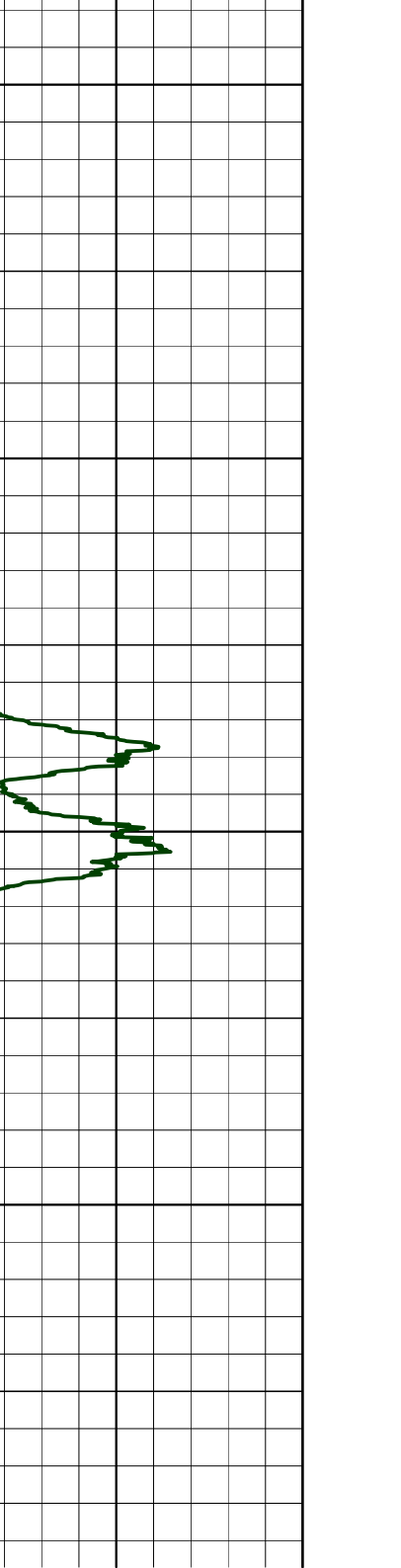
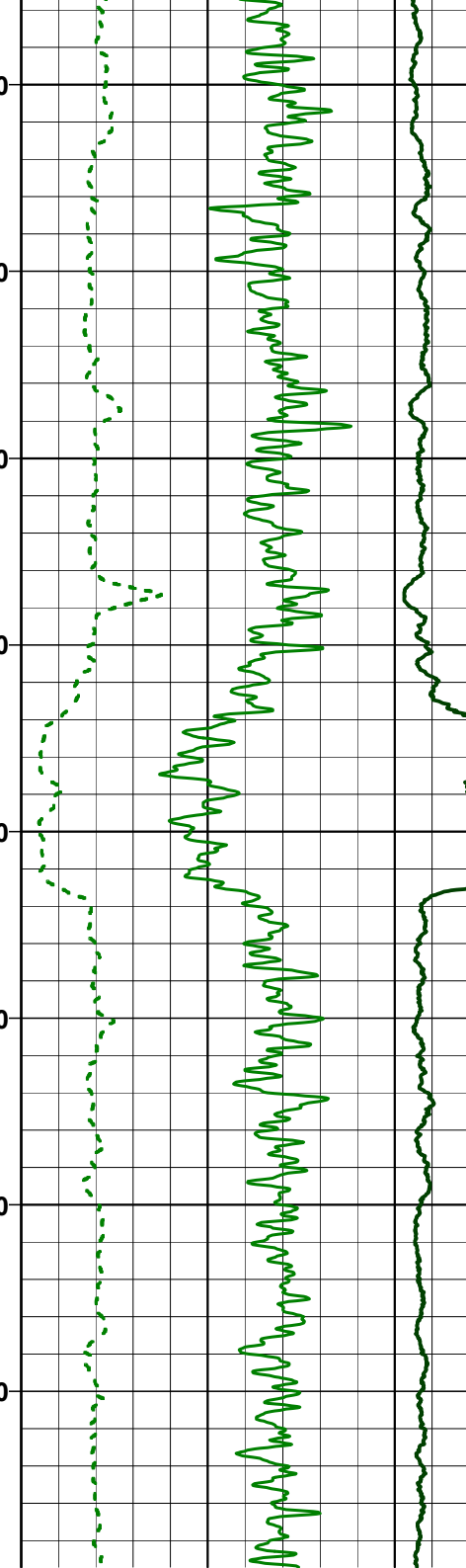
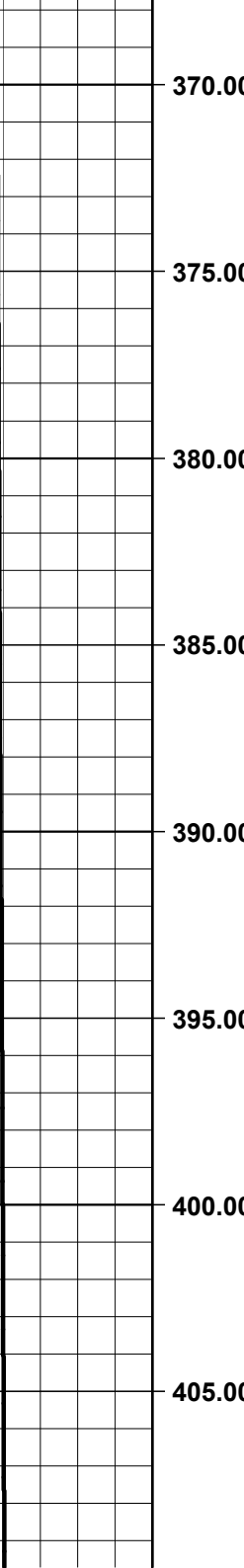
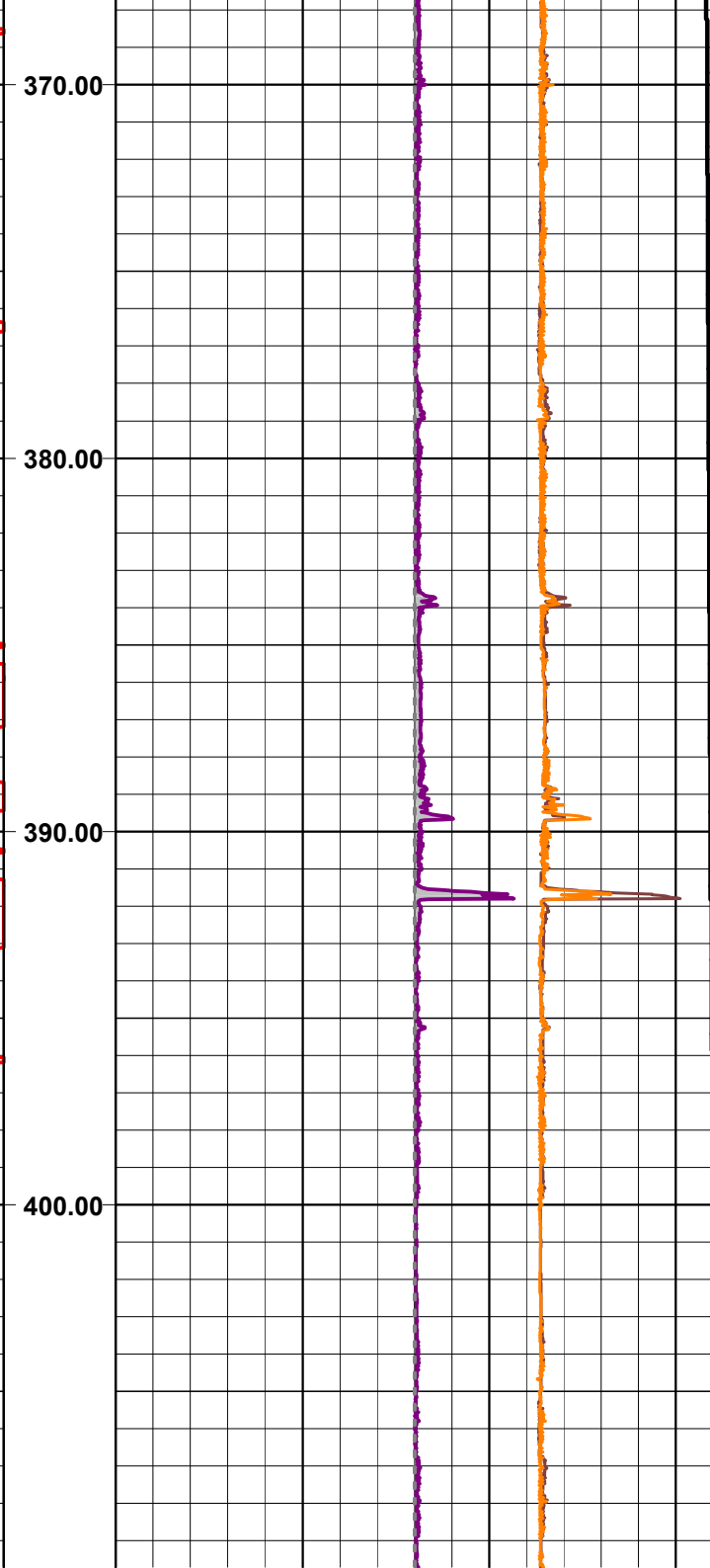
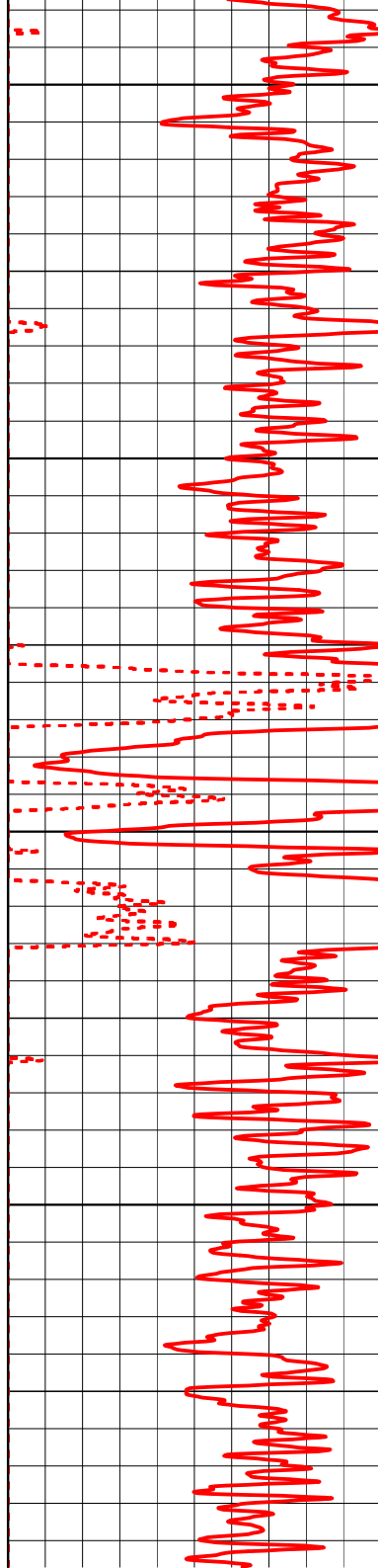


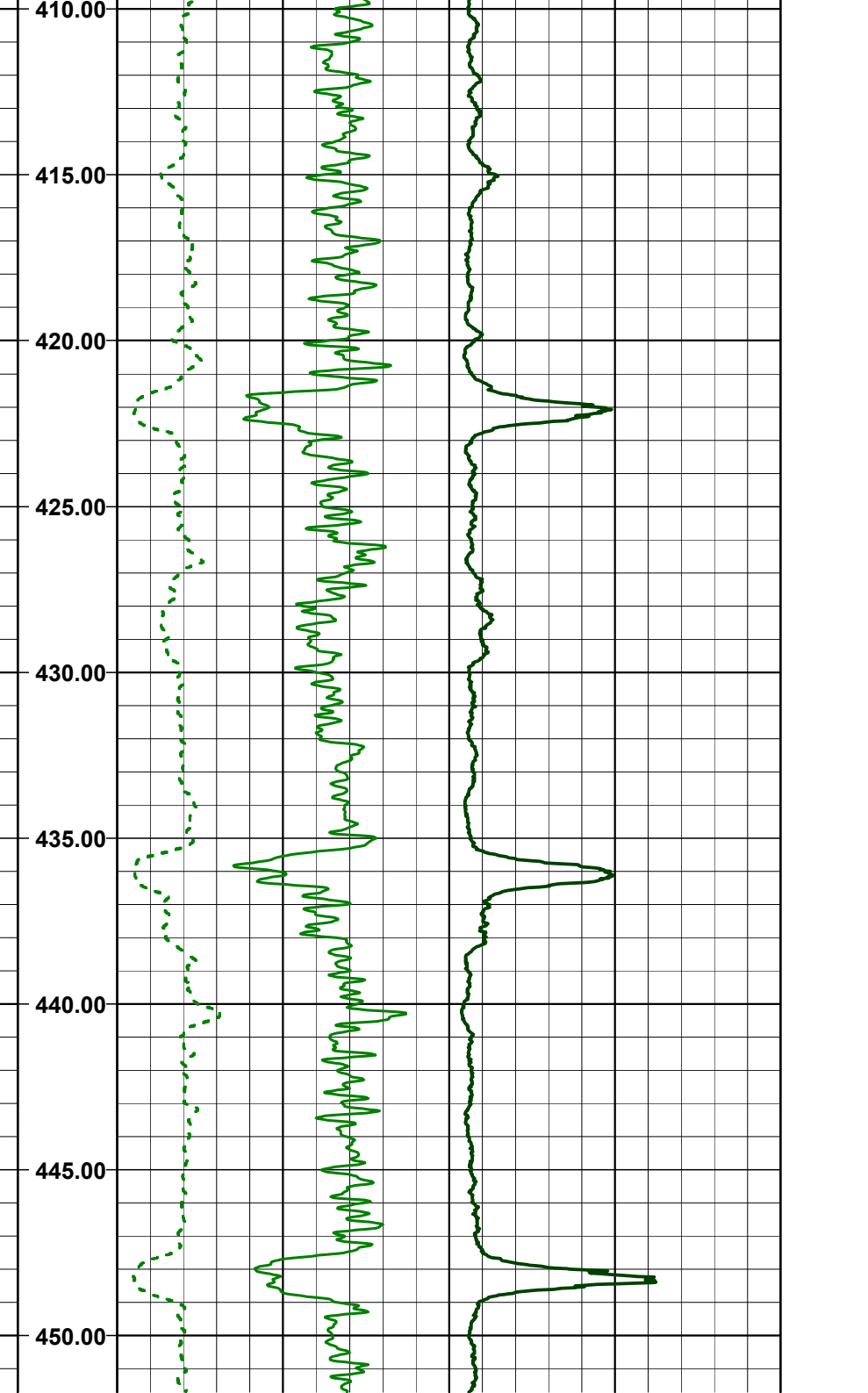
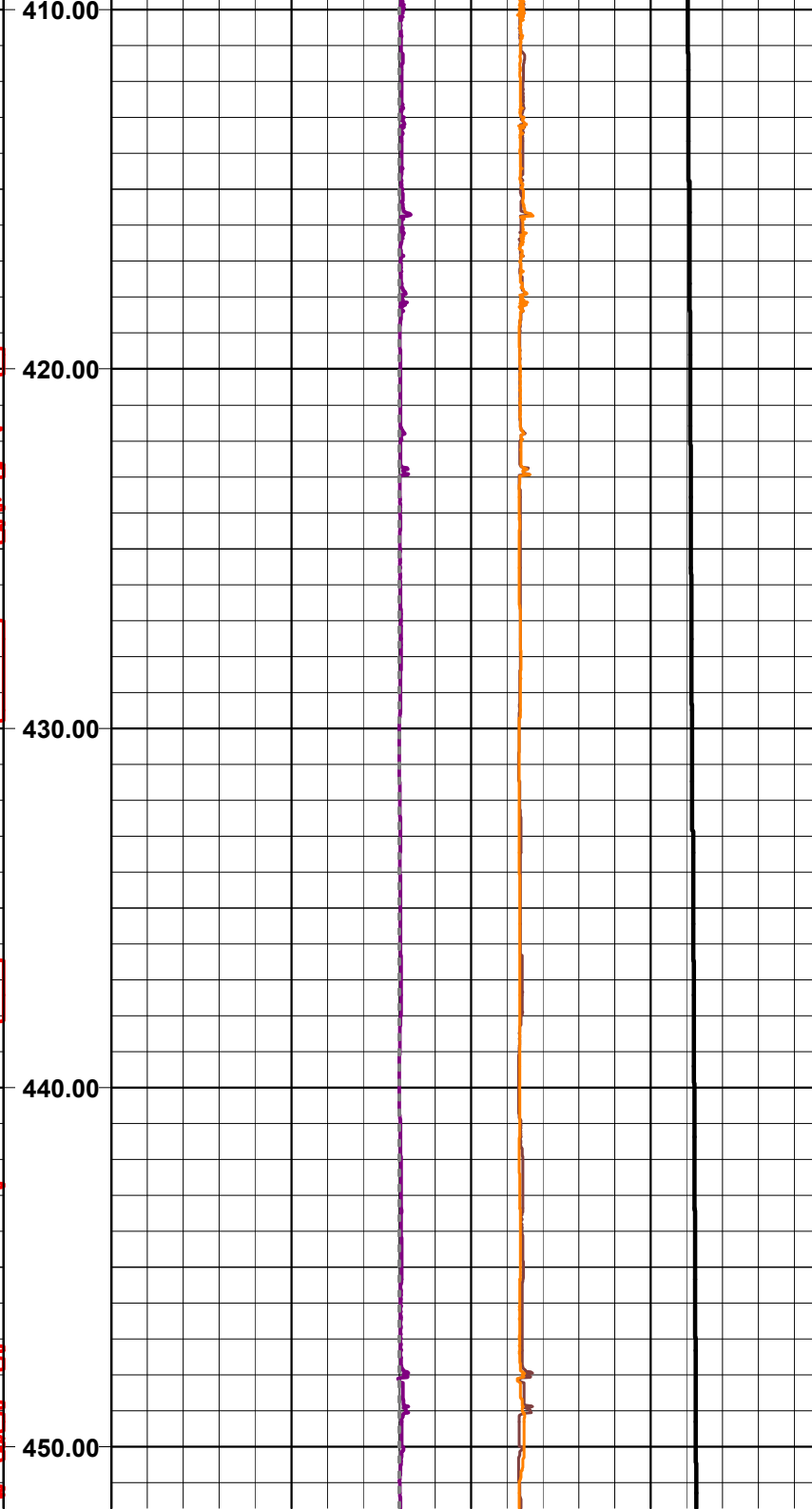
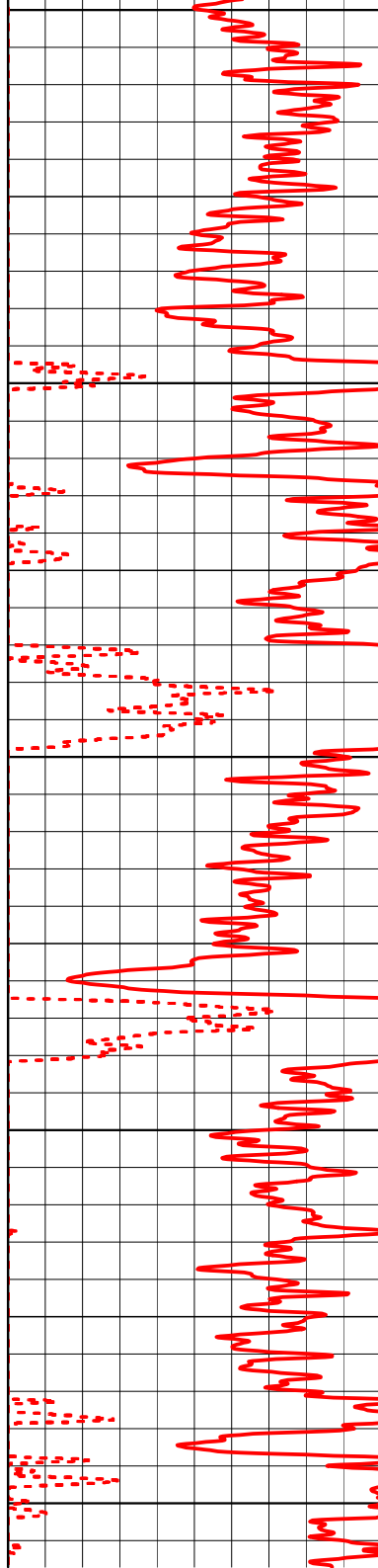


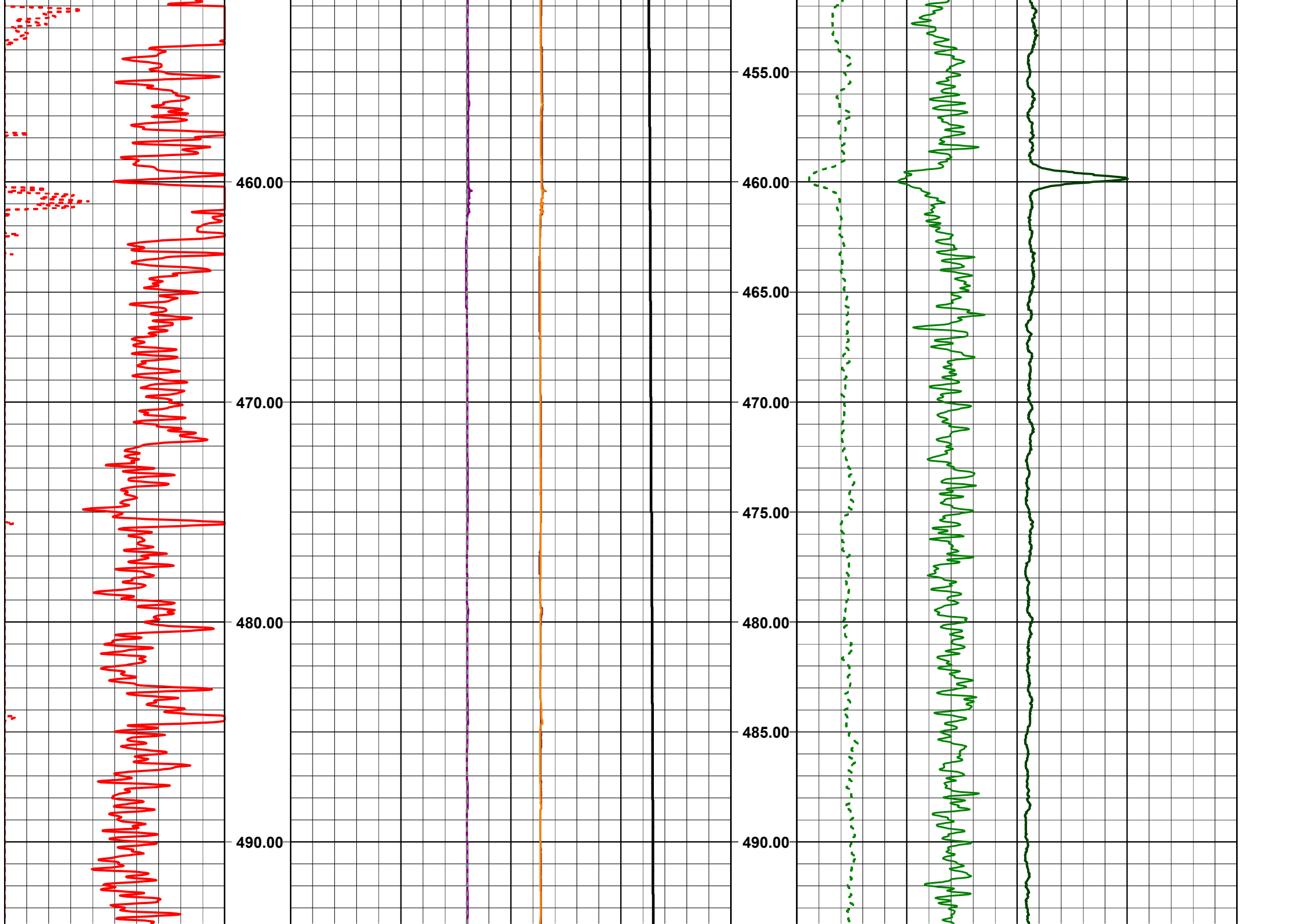


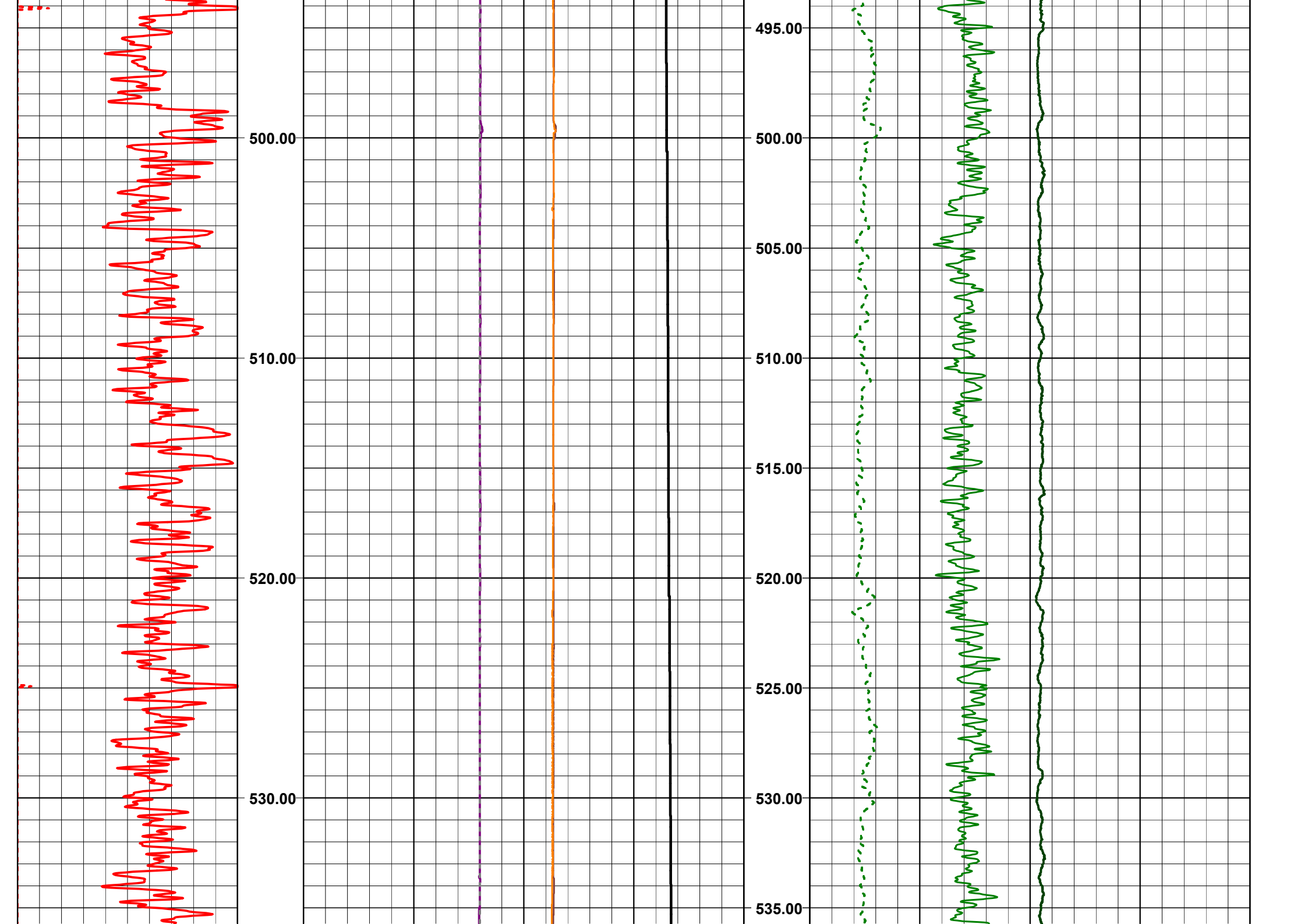


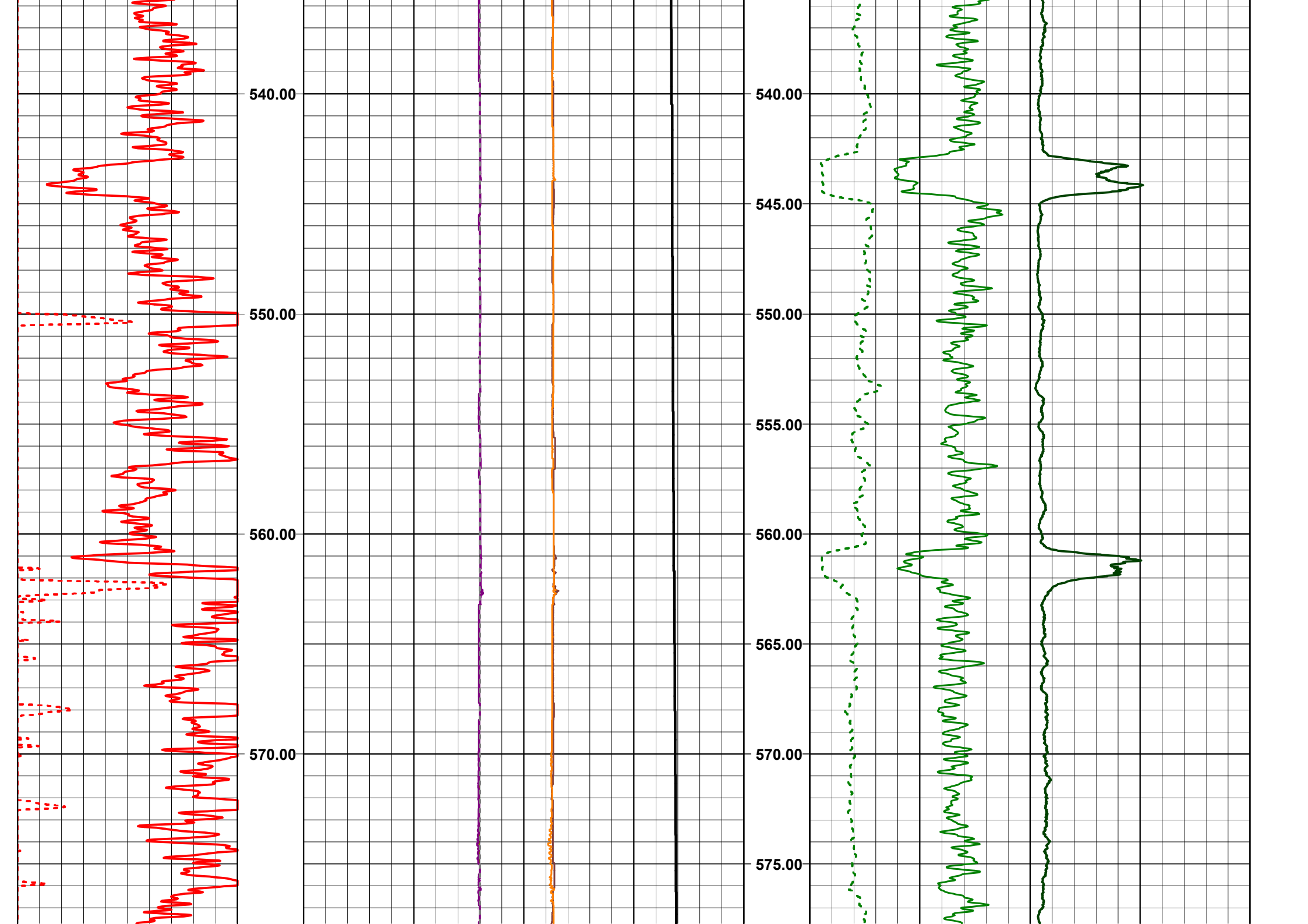


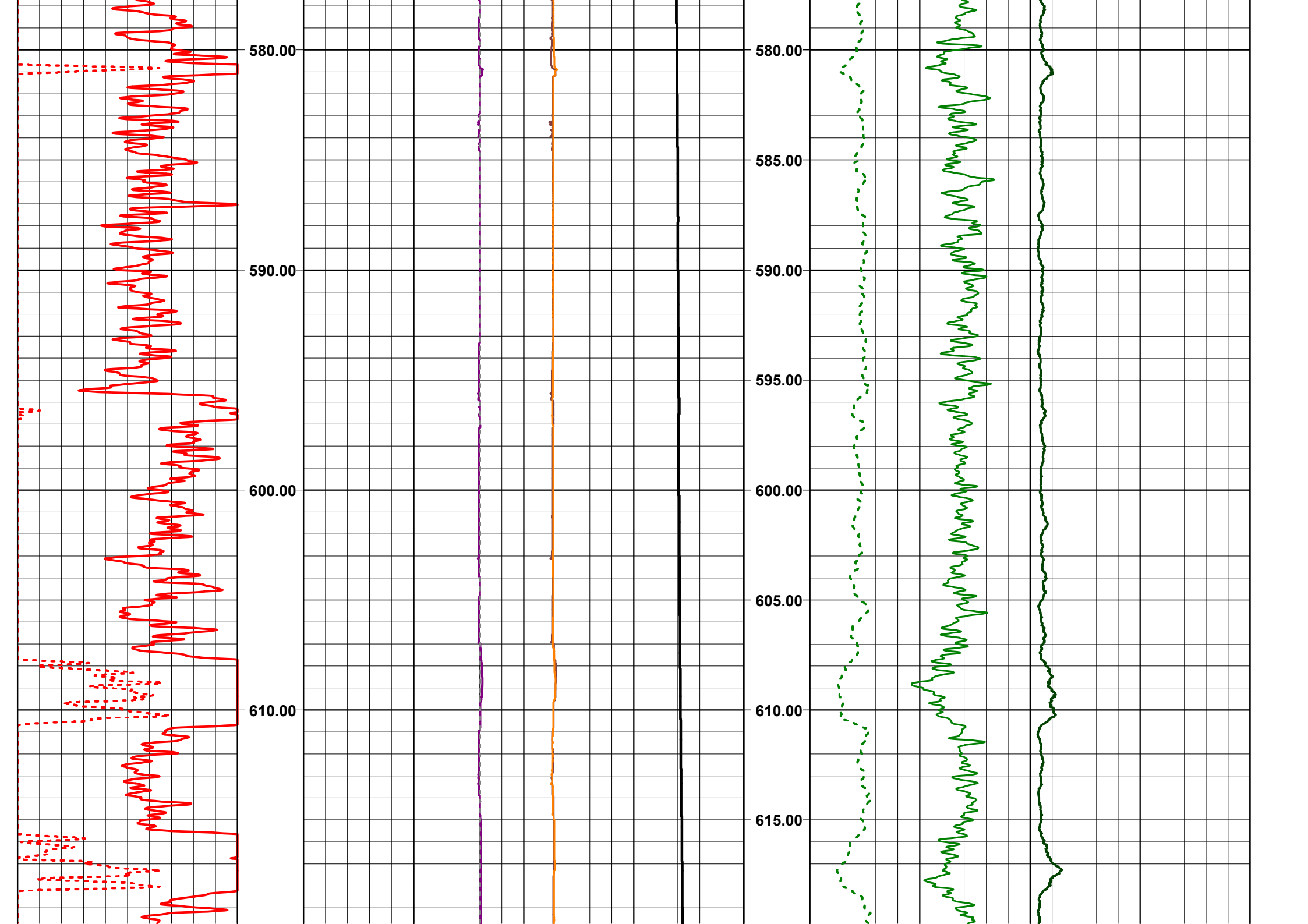


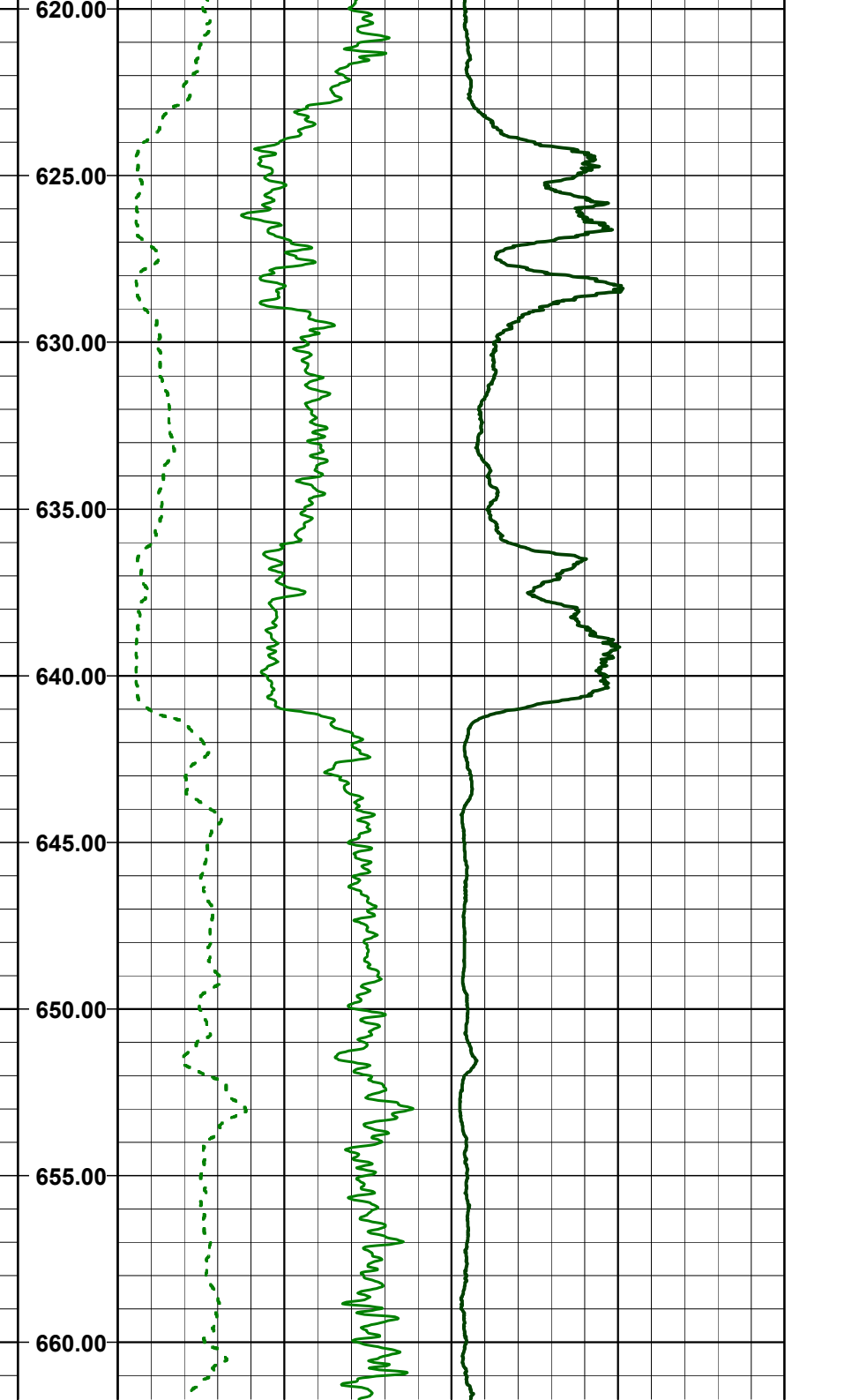
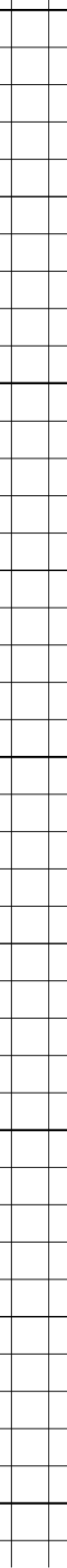
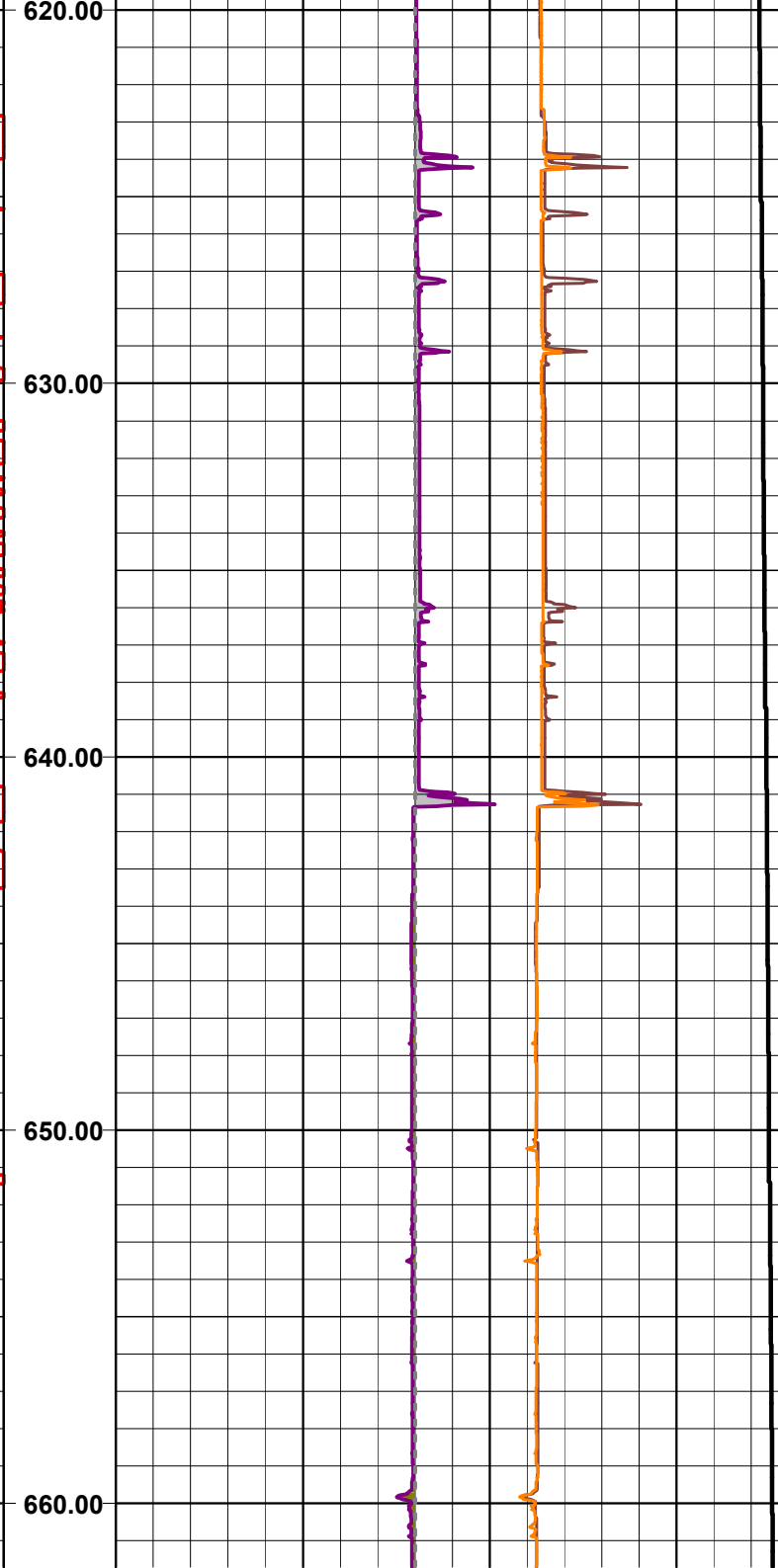
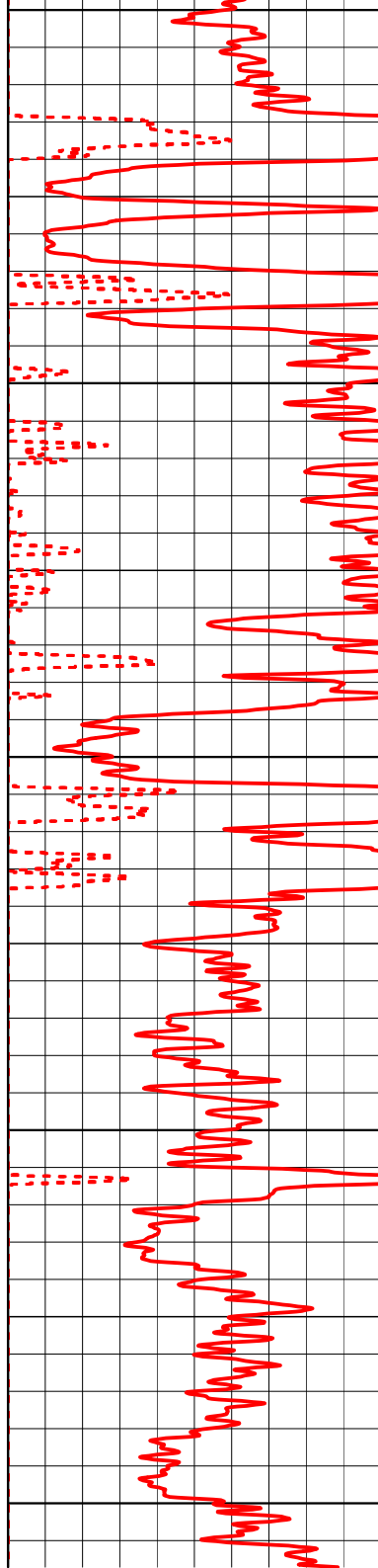


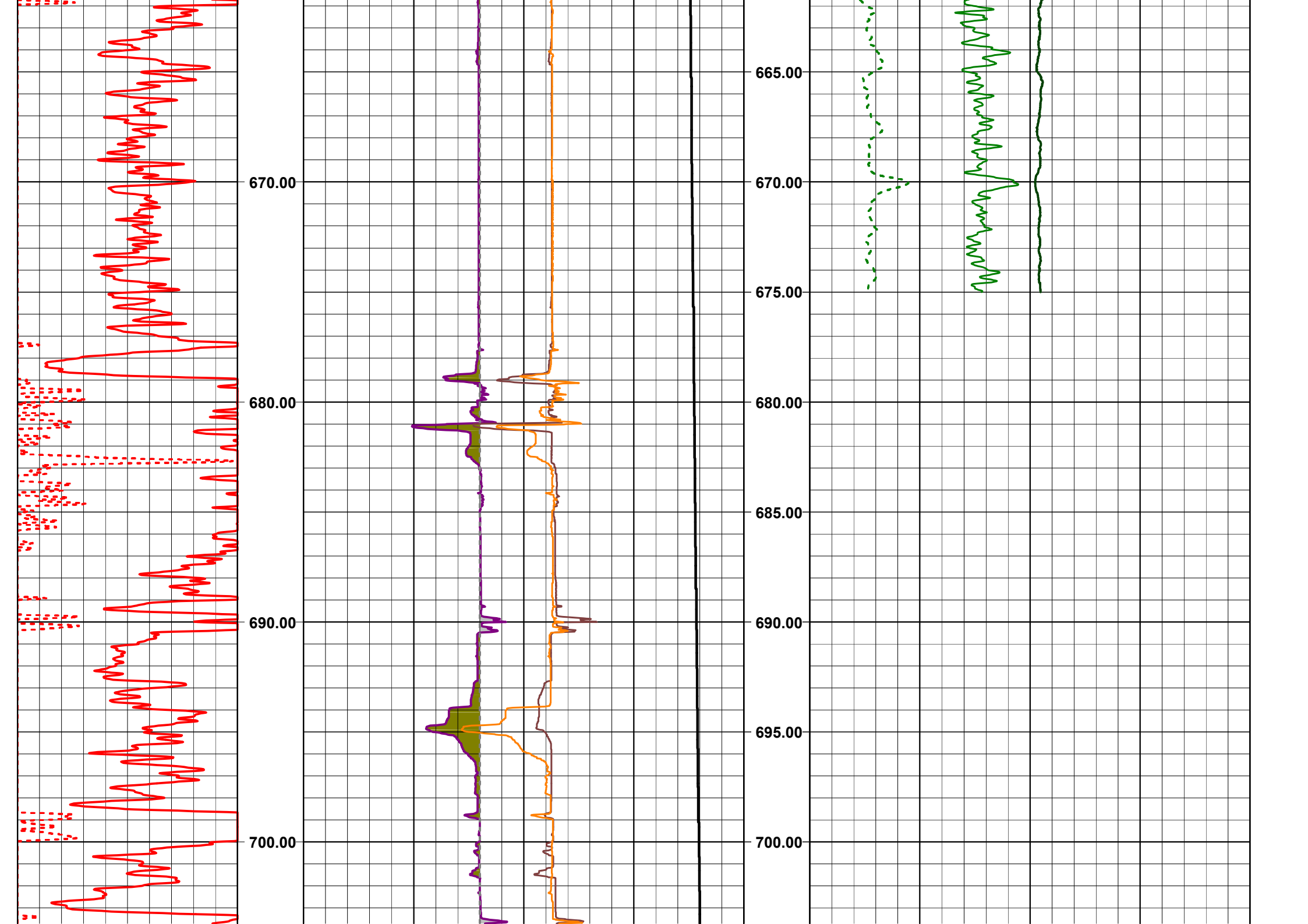


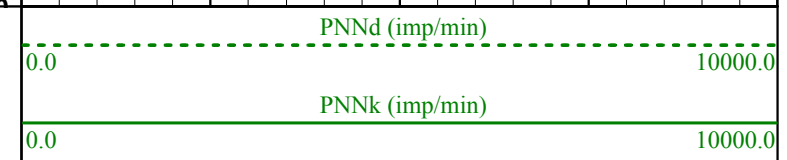
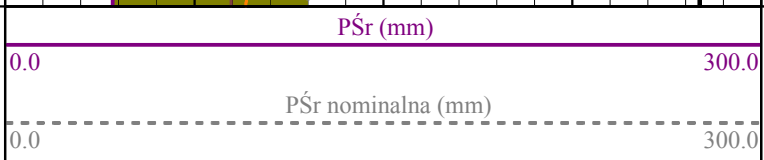
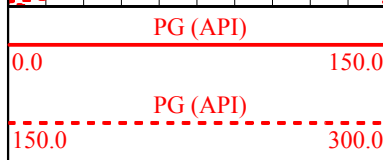
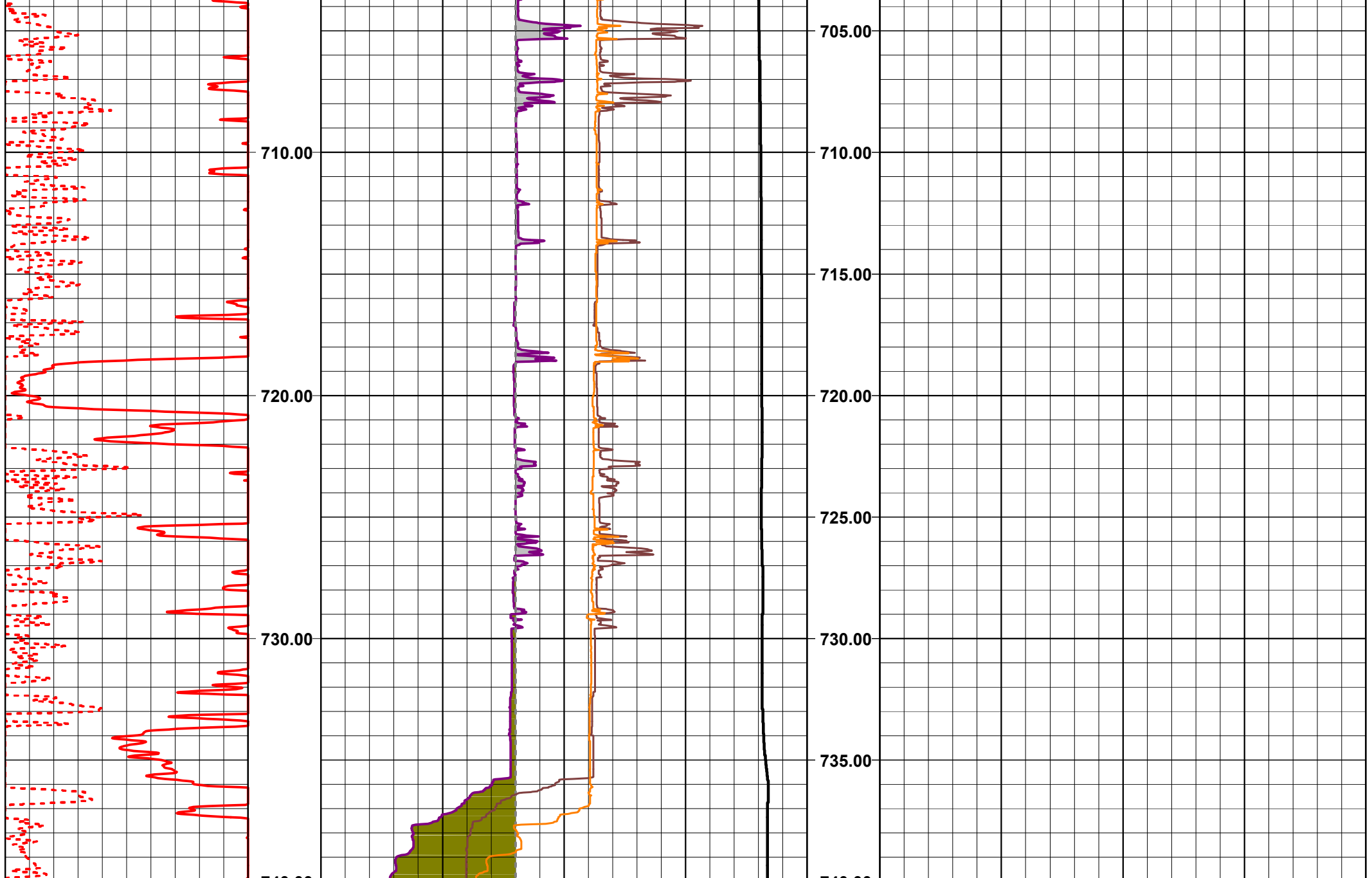












		50.0	250.0		0.0	100.0
		PŚrY (mm)				
		-50.0	250.0			
		PTn (degC)				
		0.0	25.0			