

Arkusz: PO+PGG+PA



**GRUPA POMIAROWA
ZIELONA GÓRA**

Nr ark: P- 8107 / 2014

65-705 Zielona Góra
ul. Narłowa 3

tel.(068) 3295417, 3240762
fax. (068) 3255212

POMIARY GEOFIZYCZNE

Otwór:

ZIP-5

Rejon:

Górnosląskie Zagłębie Węglowe

Odcinek pomiarowy:

108.0 - 740.0 m

Wysokość npm.:

b.d. m

Skala głębokości:

1 : 200

Data pomiarów:

10.03.2014

Wysokość podbudowy:

0.5 m

Grupa pomiarowa:

TGP-Z

Głębokość otw. wg pomiaru:

740.0 m

Kierownik:

mgr inż. J.Puchacewicz

Głębokość otw. wg wierceń:

740.0 m

Operatorzy:

T.Hanus

Średnica otworu:

120 mm

Typ laborat. geofizycznego:

GeoVista

Głębokość rur. wg pomiaru:

108.0 m

Typ kabla:

3/16" coaxial

Głębokość rur. wg wierceń:

108.0 m

Opracowujący:

mgr inż. T.Fryziak

Średnica wewn. rur:

5 1/2 cale
131 mm

Weryfikator:

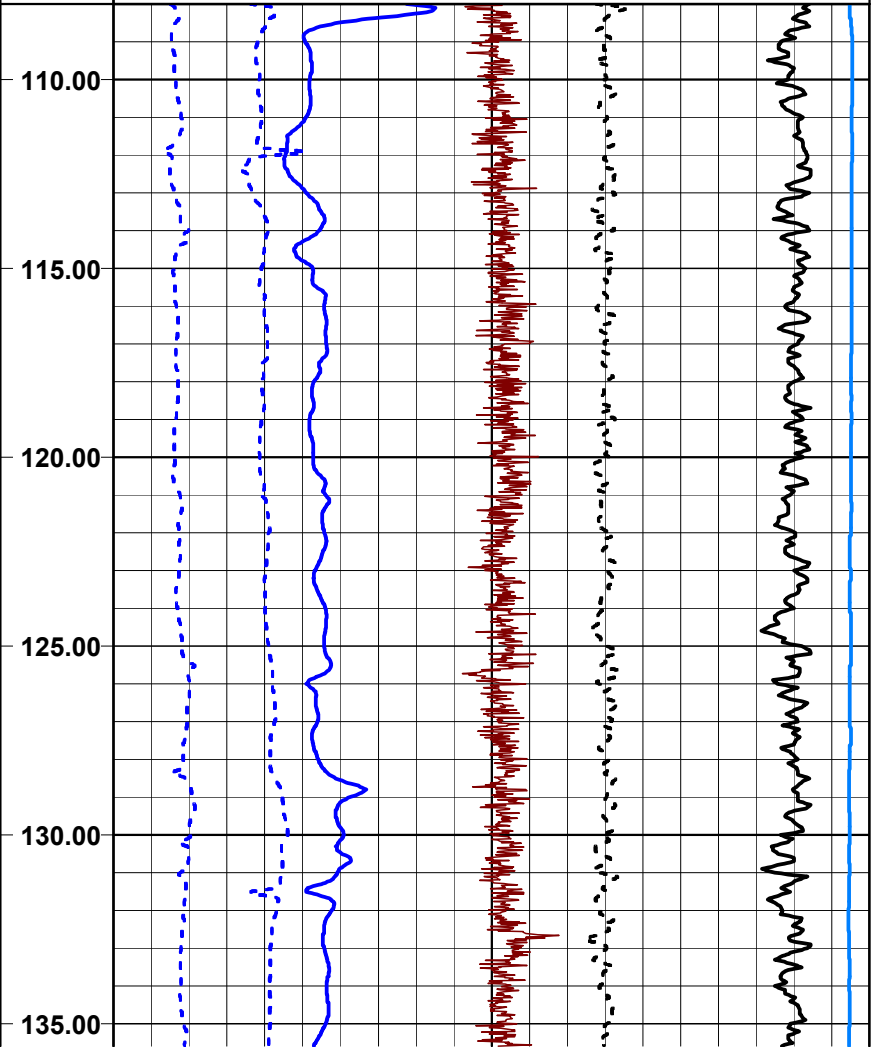
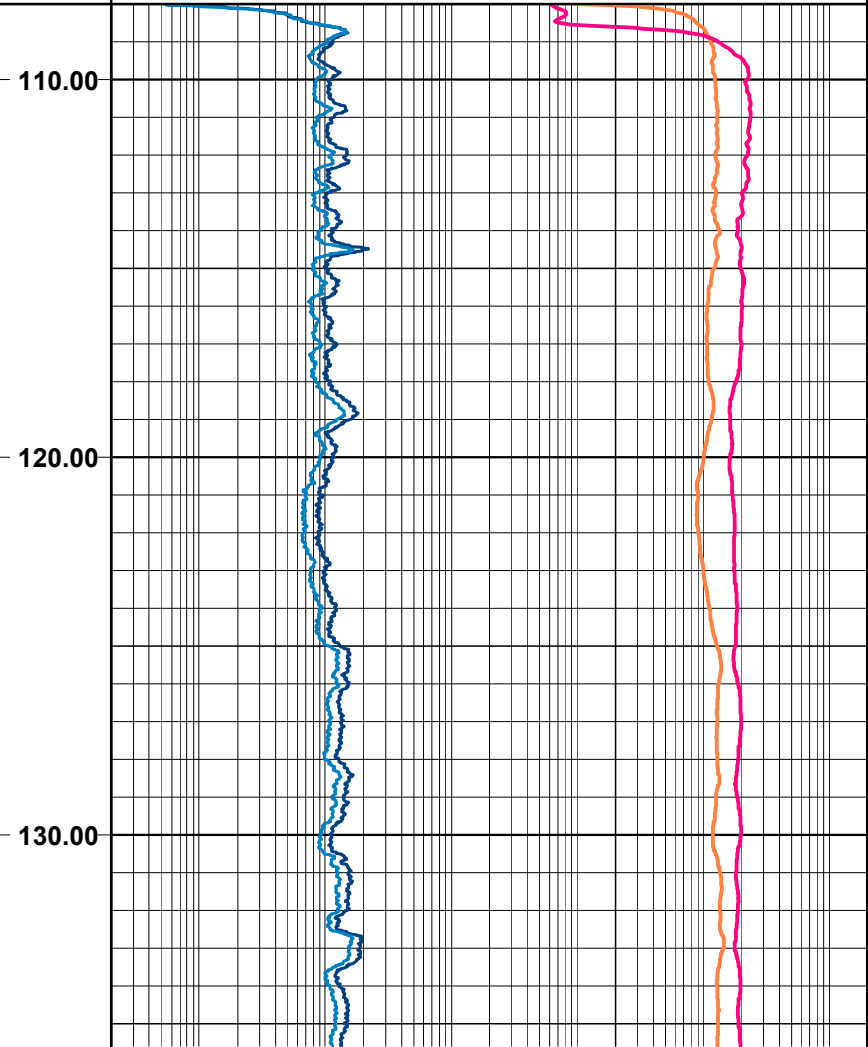
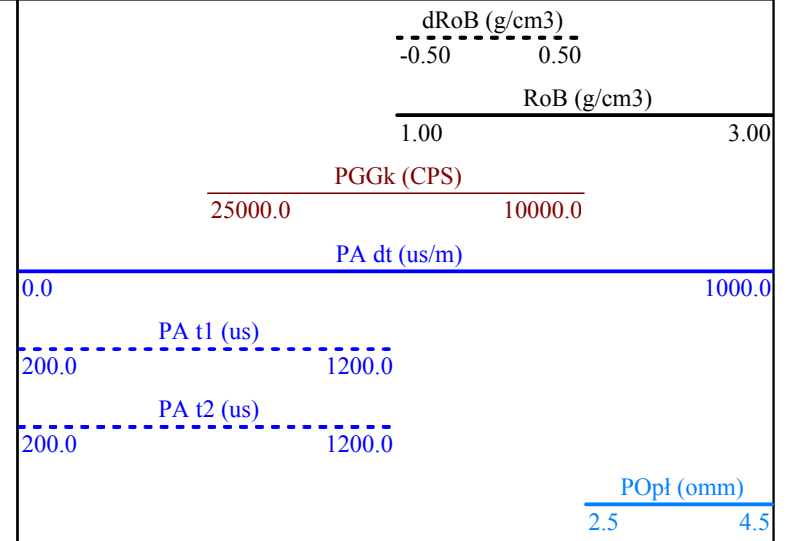
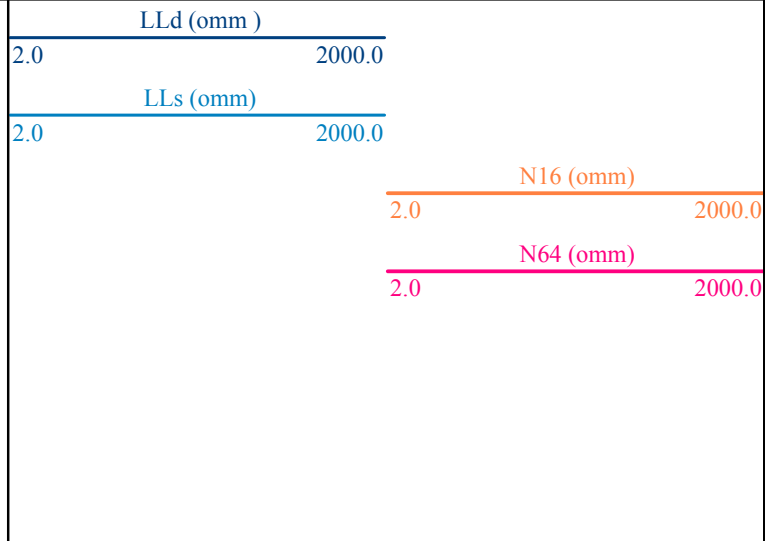
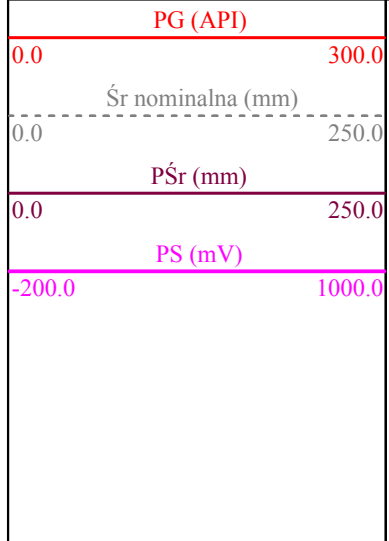
inż. R.Burliğa

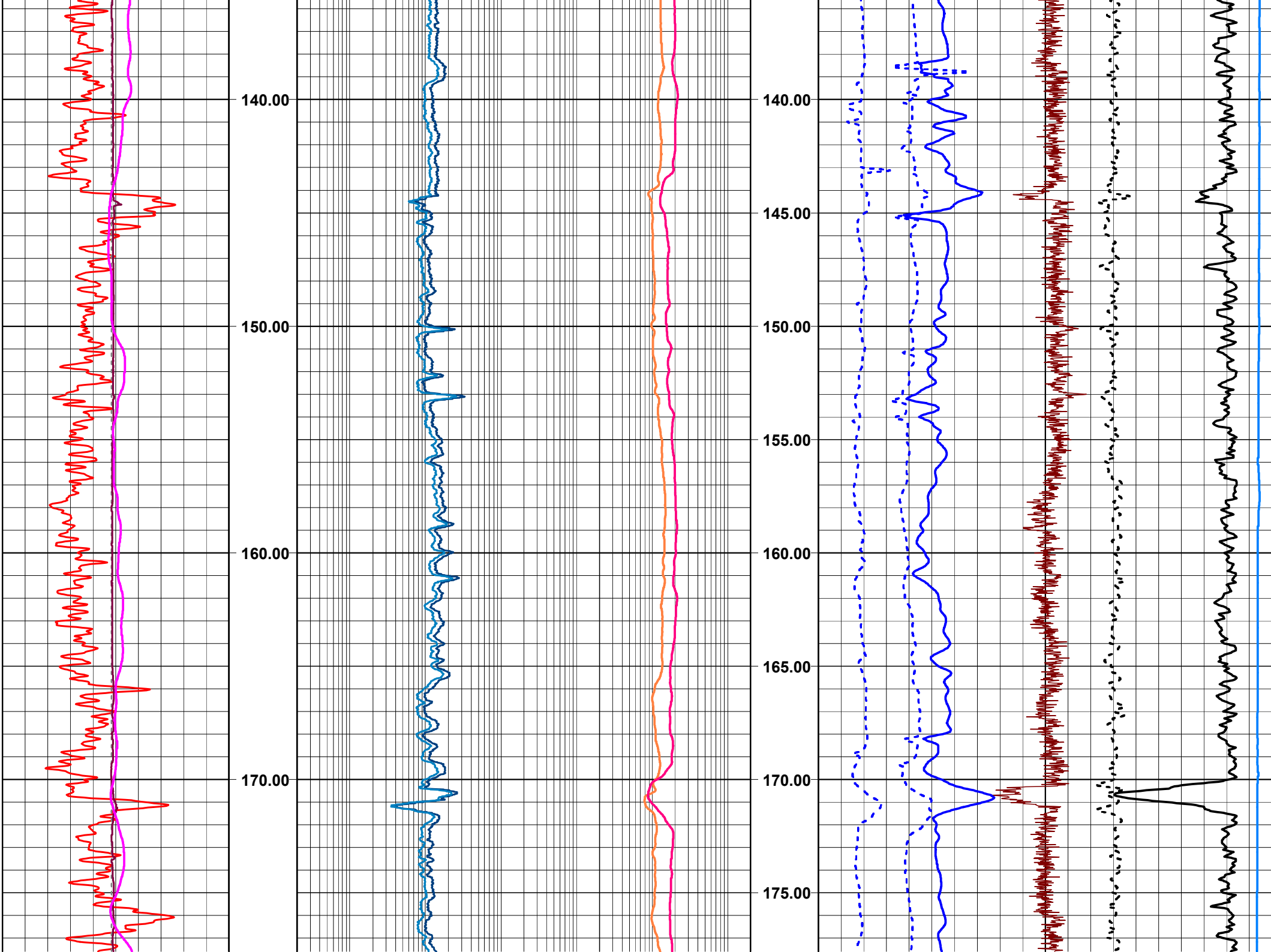
Parametry płuczki:

Rodzaj płuczki: bentonitowo-polimerowa
Gęstość: 1.02 g/cm³
Wytrzymałość strukt.: b.d. j.szir.
Zasolenie: b.d. g/l
Filtracja: 16.0 cm³

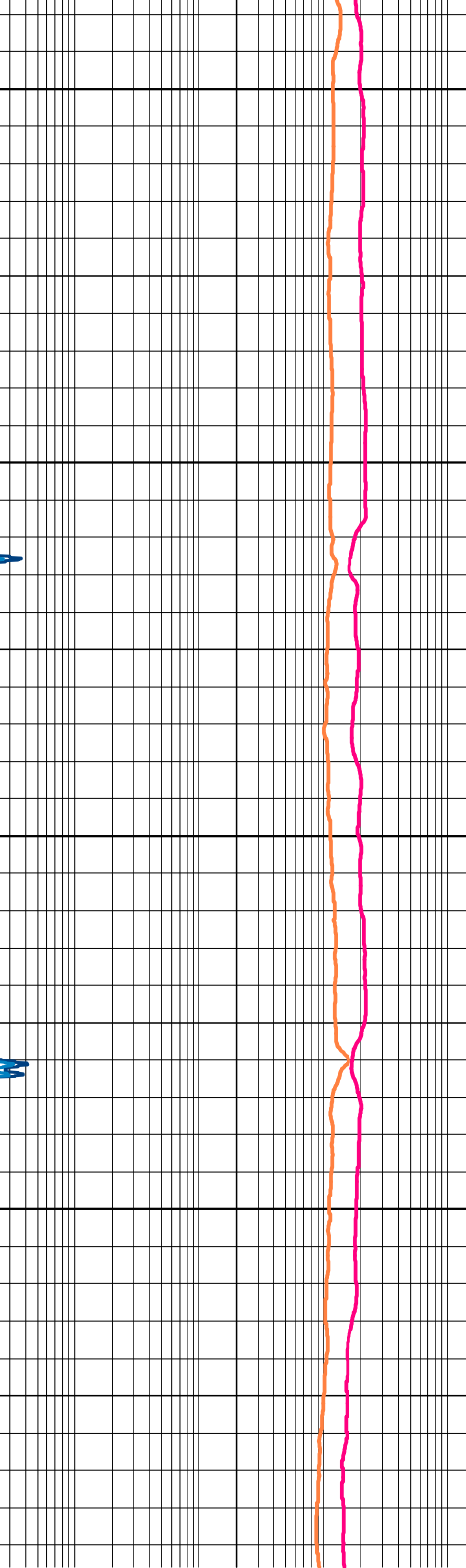
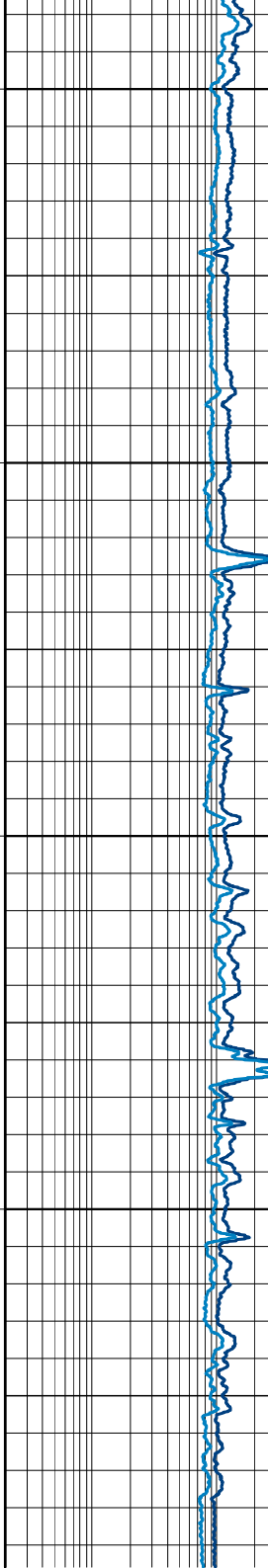
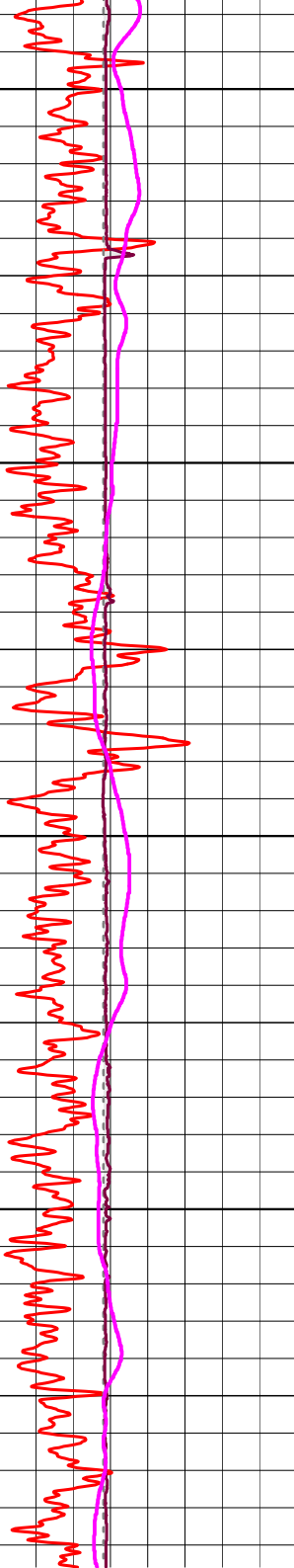
Wiskozja: 38 s/1000cm³
Zapiaszczenie: b.d. %
Oporność płuczki: 3.717 omm
w temperaturze: 17.5 st C

Krzywa pomiarowa	PG	POpł	Lld, Lls	SO + PS	dRob, Rob, PGGk	PAP	PŚr
Typ sondy	NGRS	TCME	DLL3	ELOG	FDSB	CBLS	2ACS
Prędkość pomiaru [m/min]	5.0	5.0	5.0	5.0	5.0	5.0	5.0
Rozstaw sondy [m]	-	-	-	-	-	-	-
Interwał [m]	od	0.0	108,0	108,0	108,0	108,0	108,0
	do	740,0	740,0	736,0	736,0	736,0	740,0

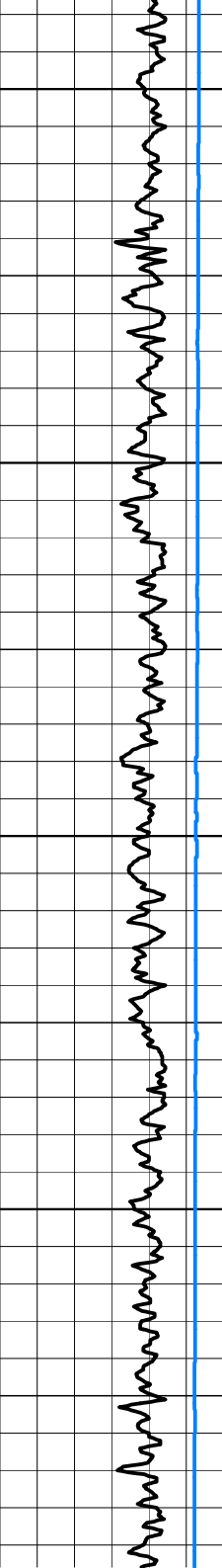
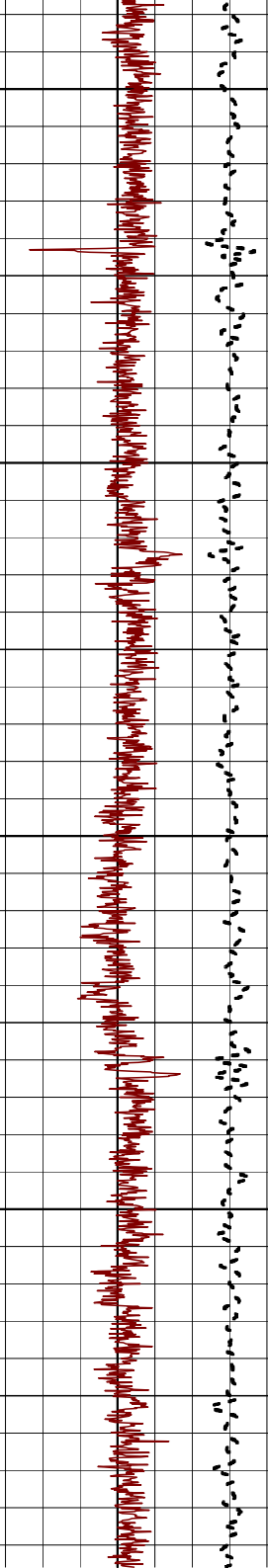
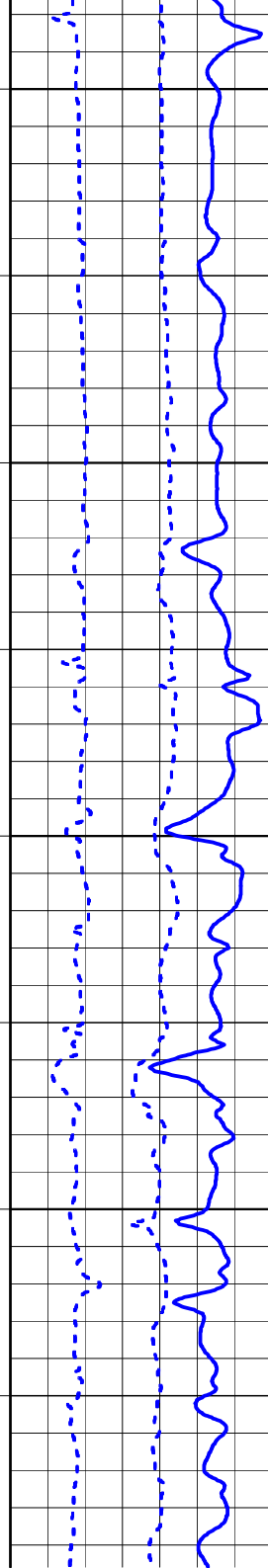


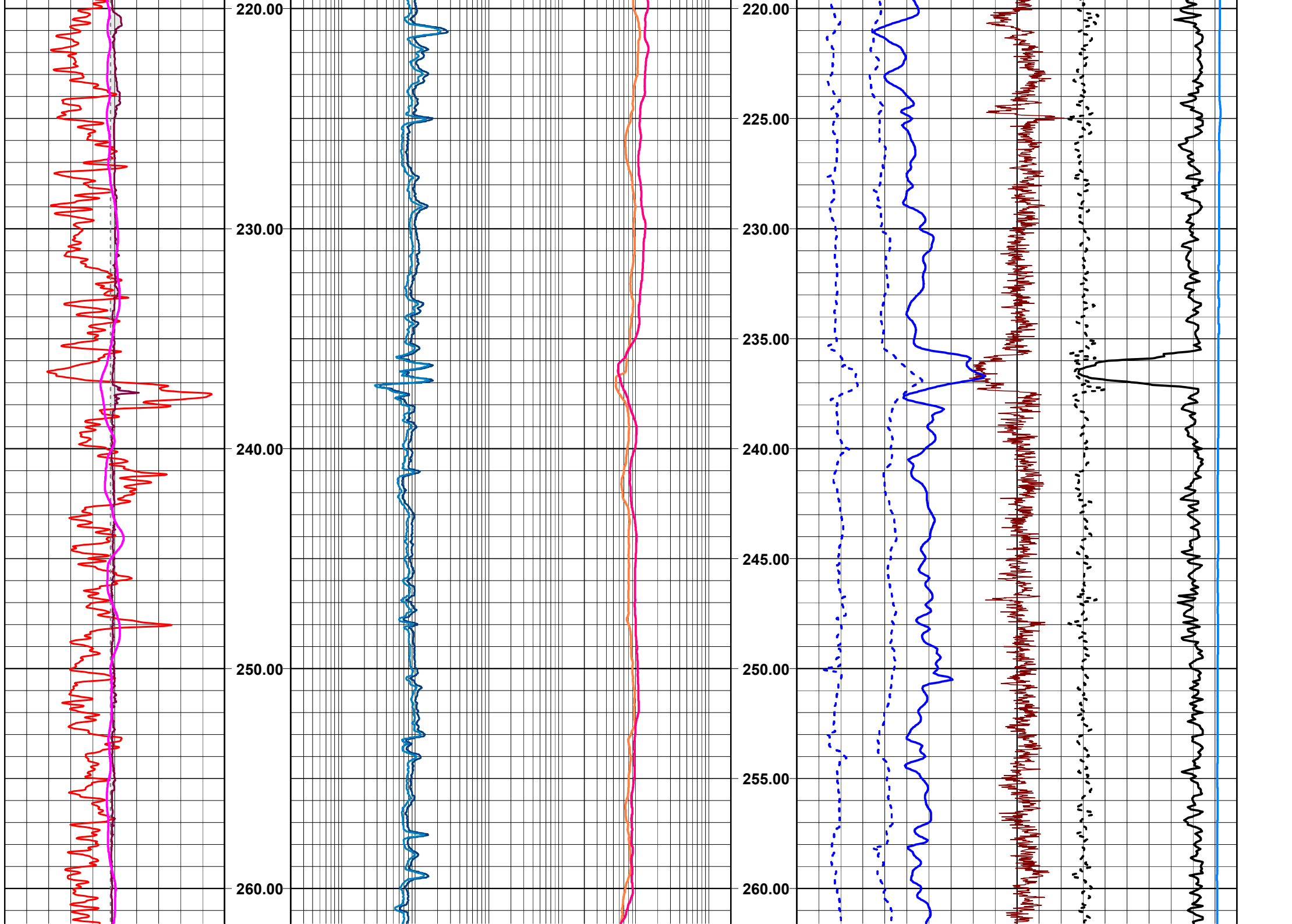


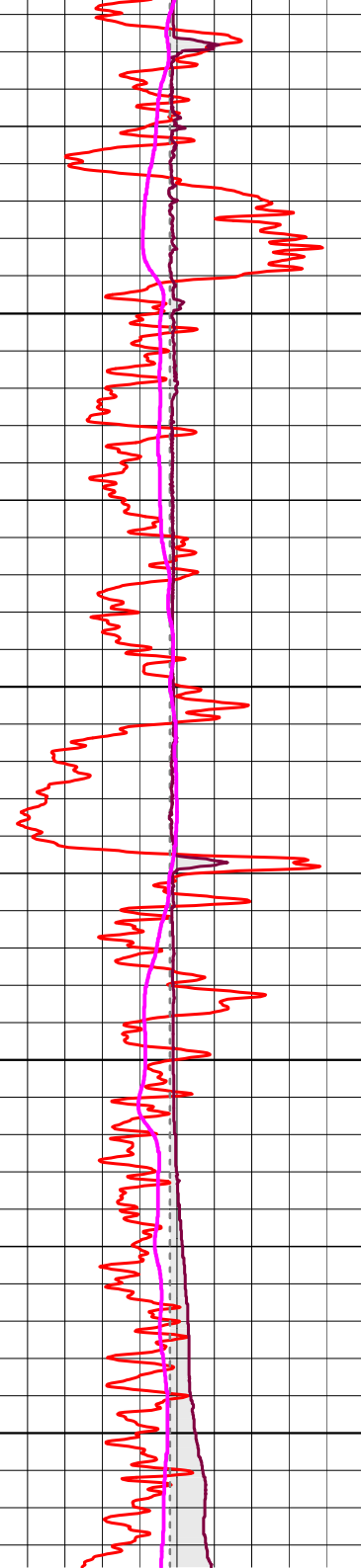
180.00
190.00
200.00
210.00



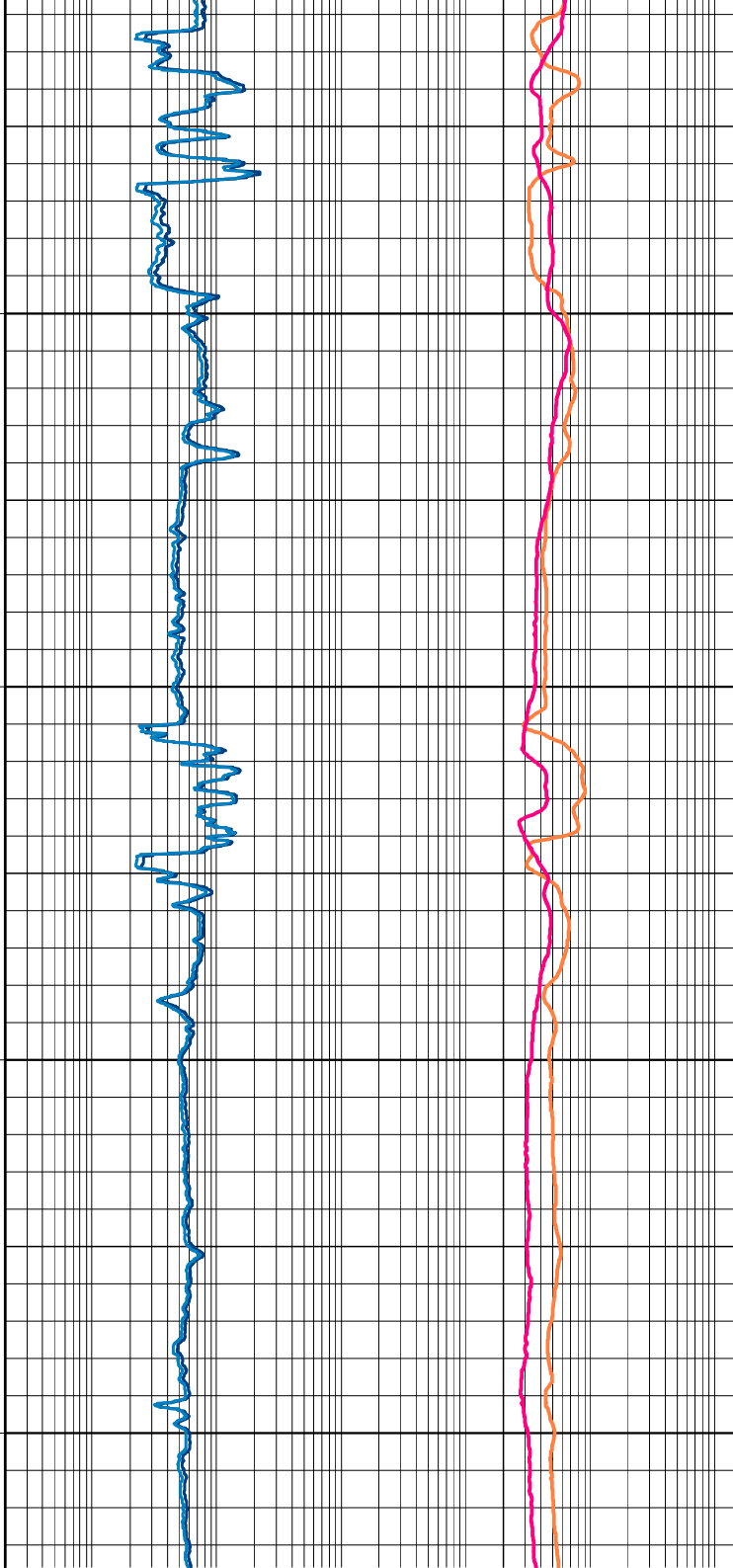
180.00
185.00
190.00
195.00
200.00
205.00
210.00
215.00



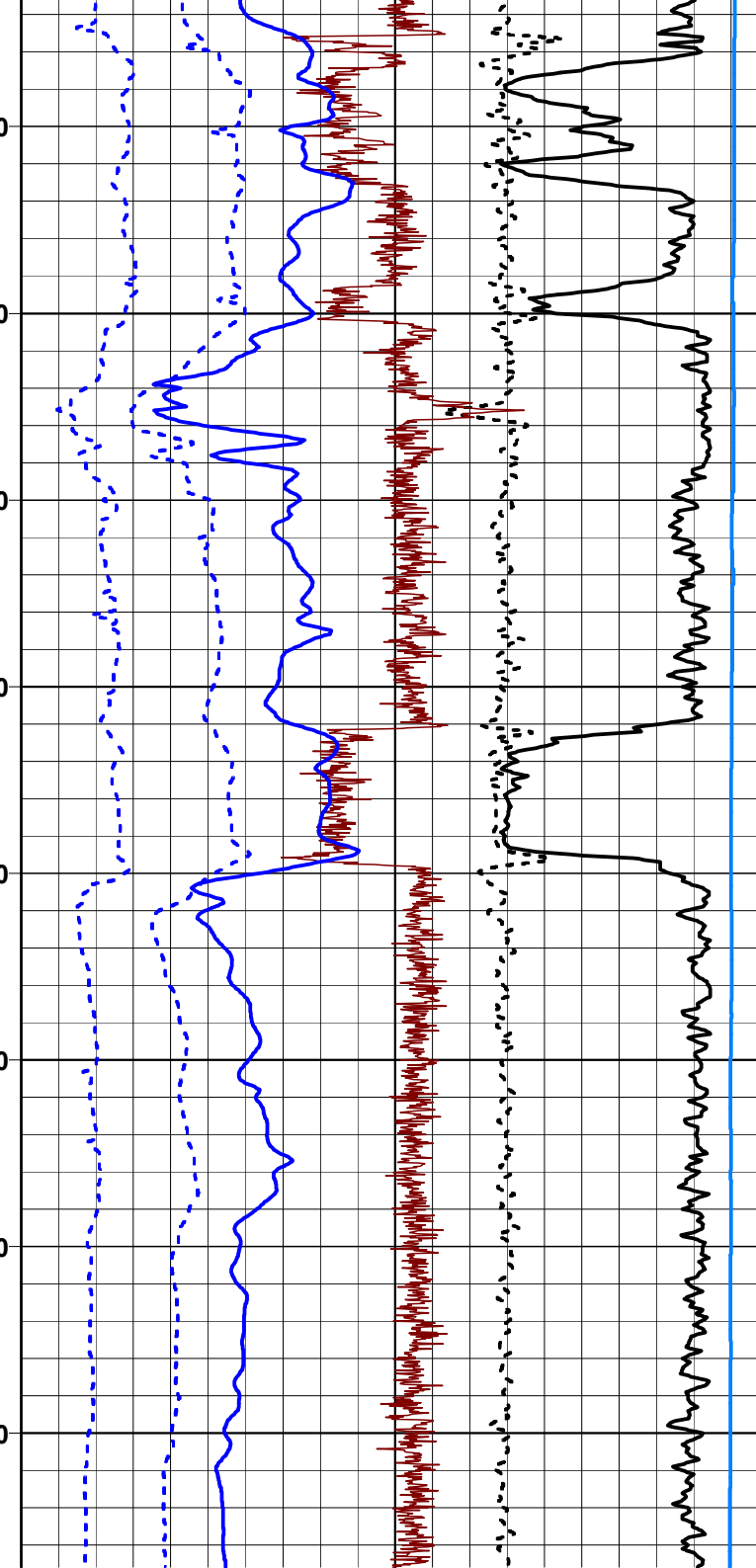


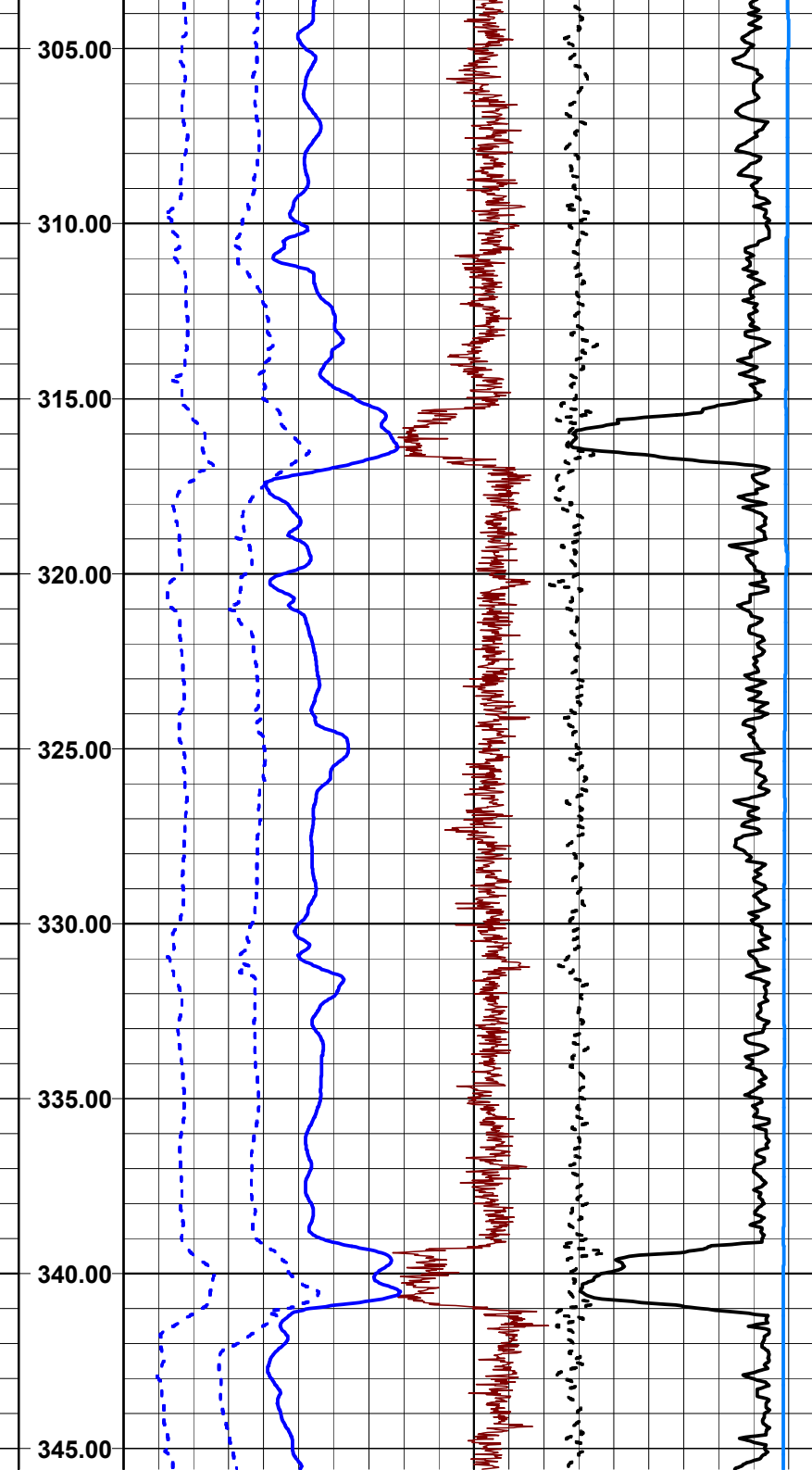
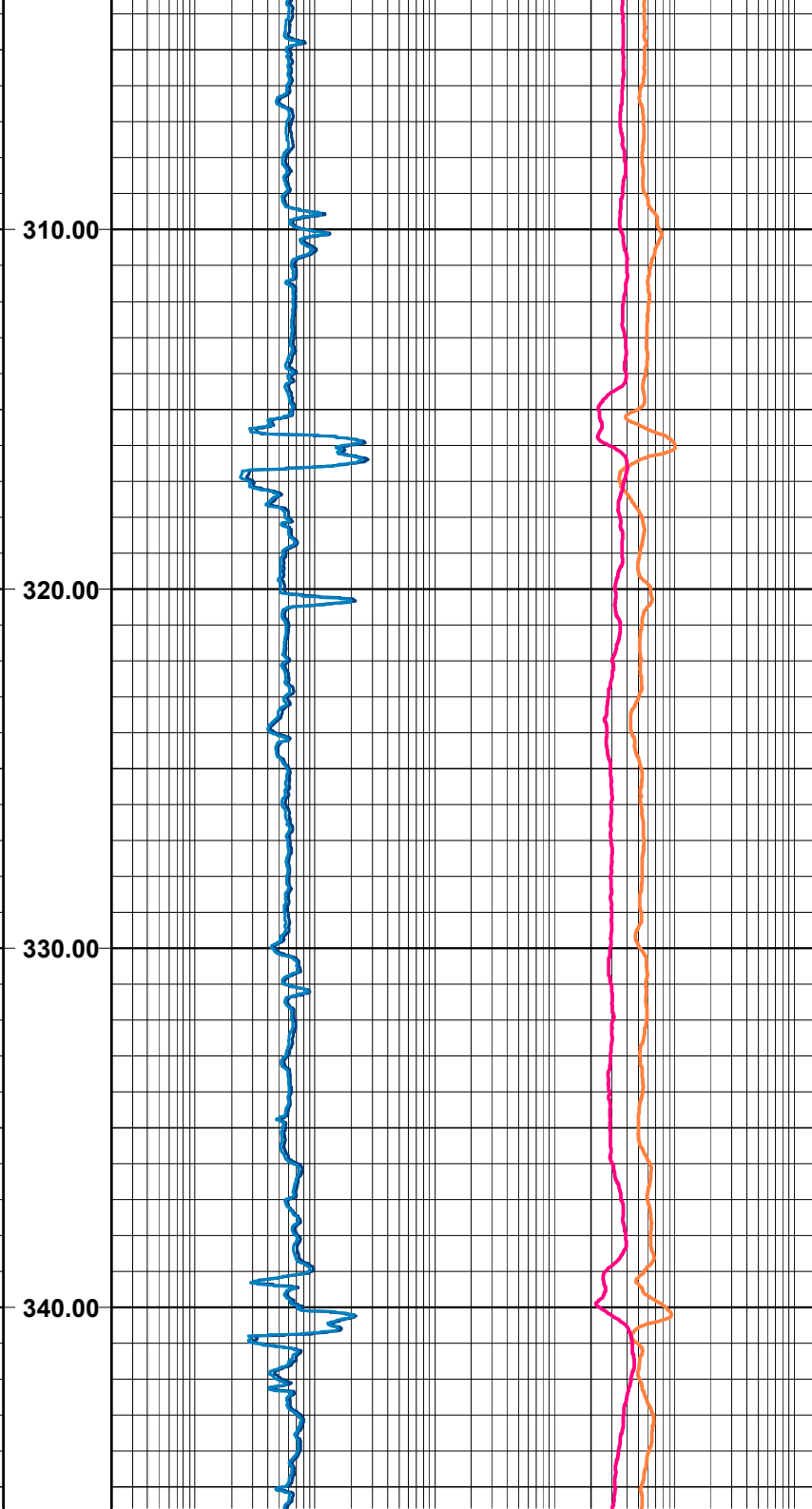
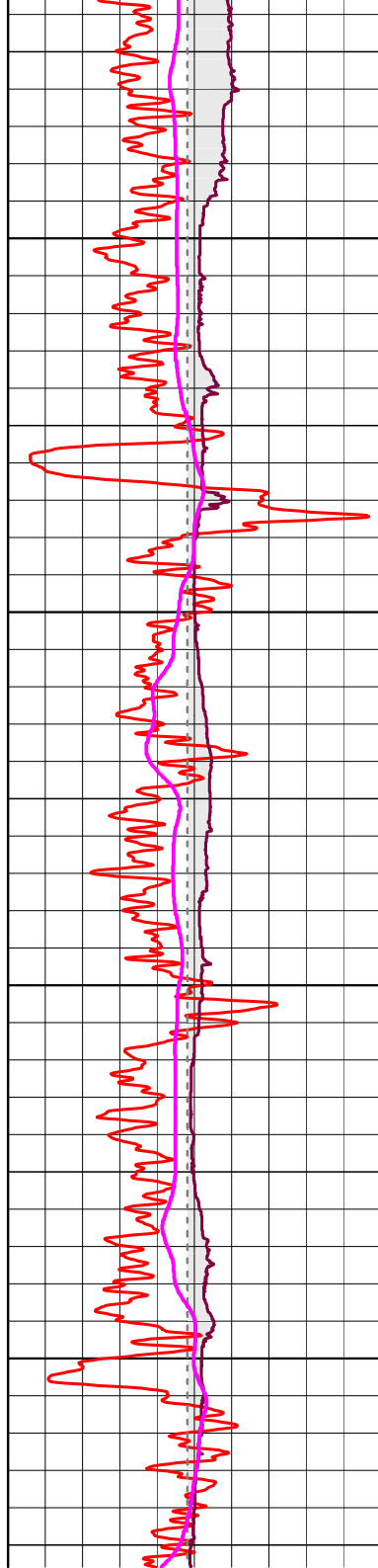


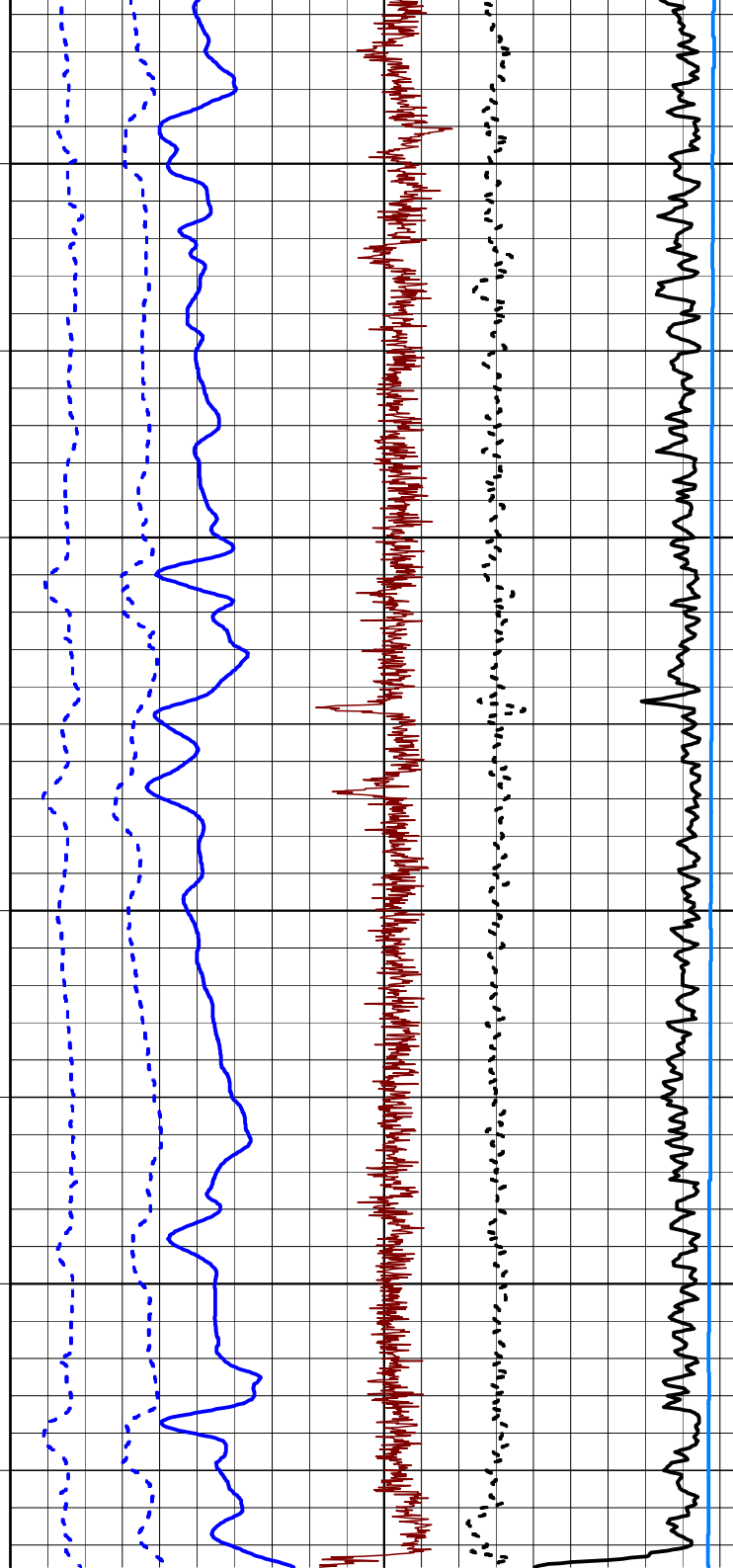
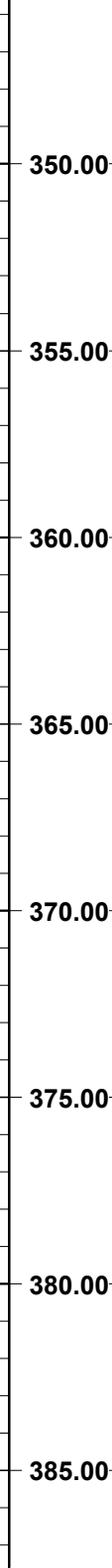
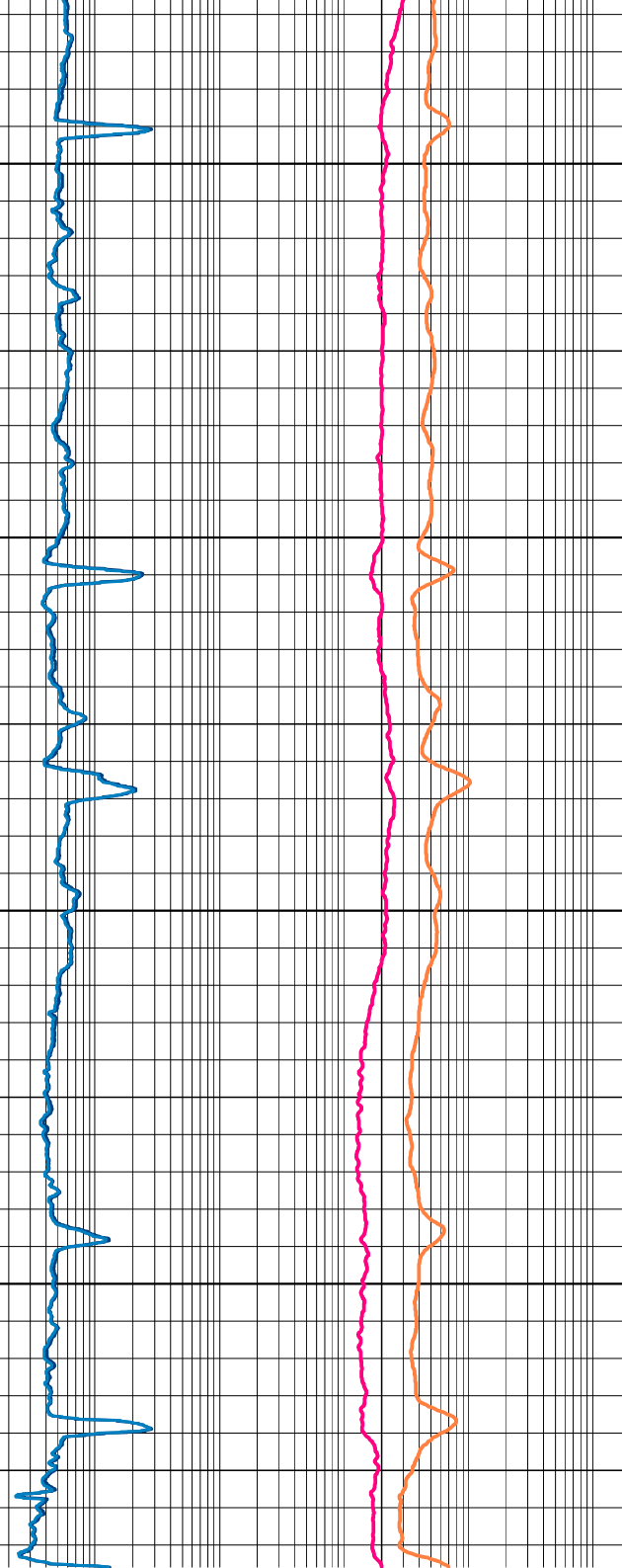
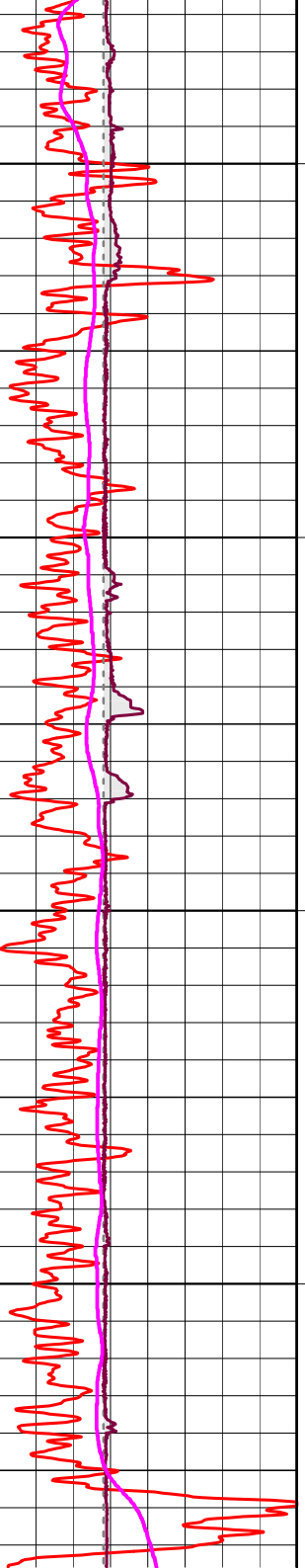
270.00
280.00
290.00
300.00

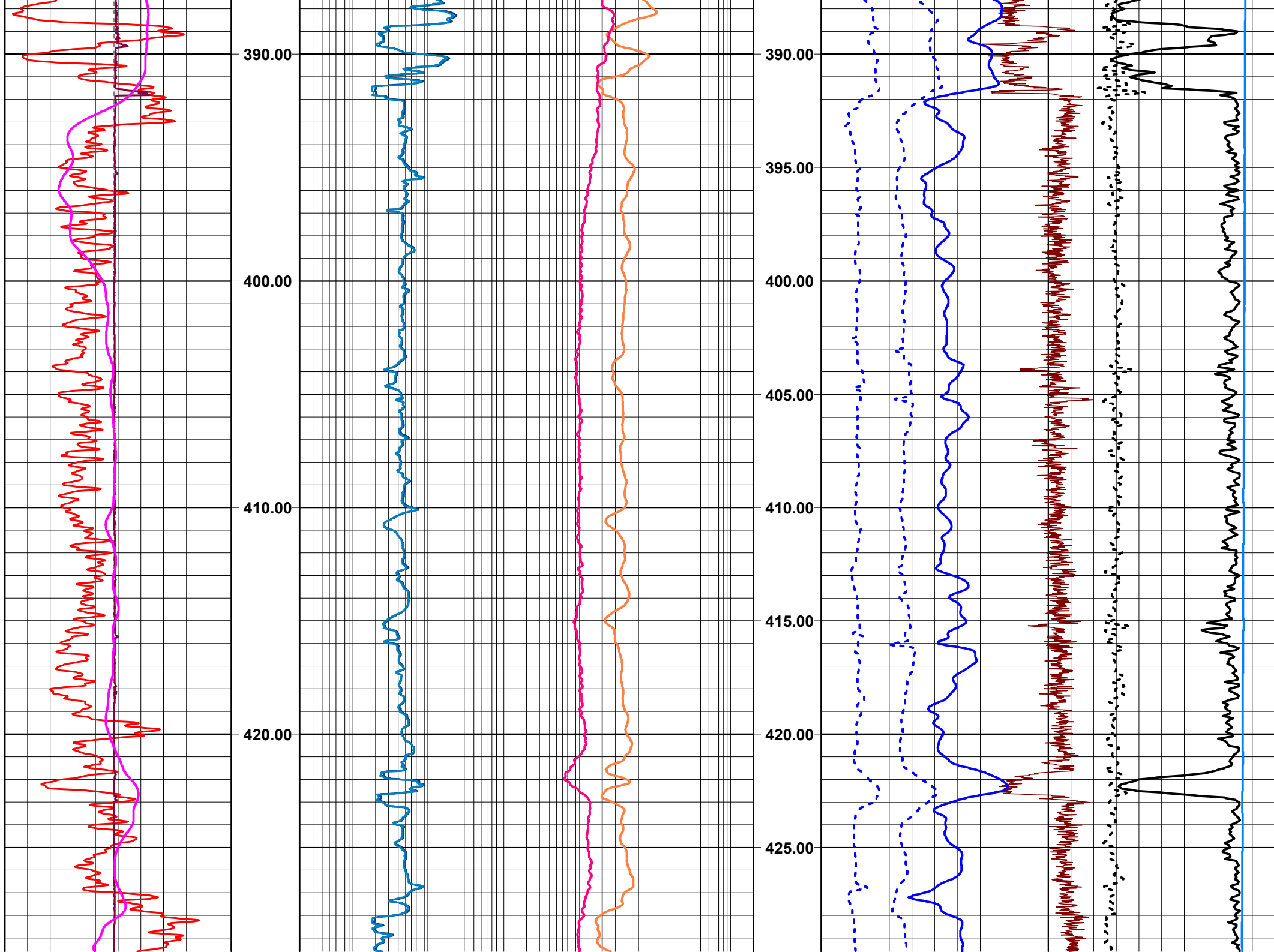


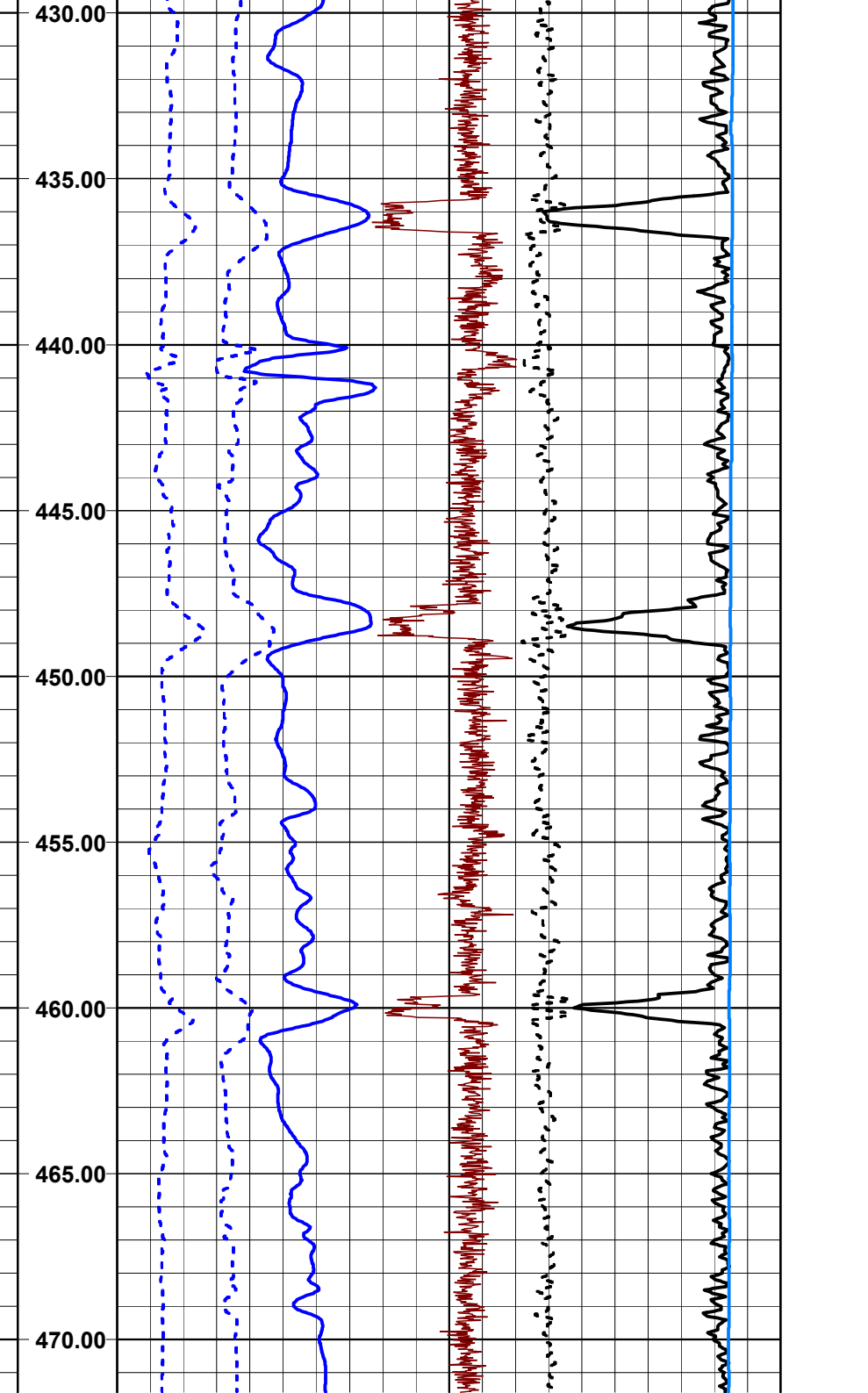
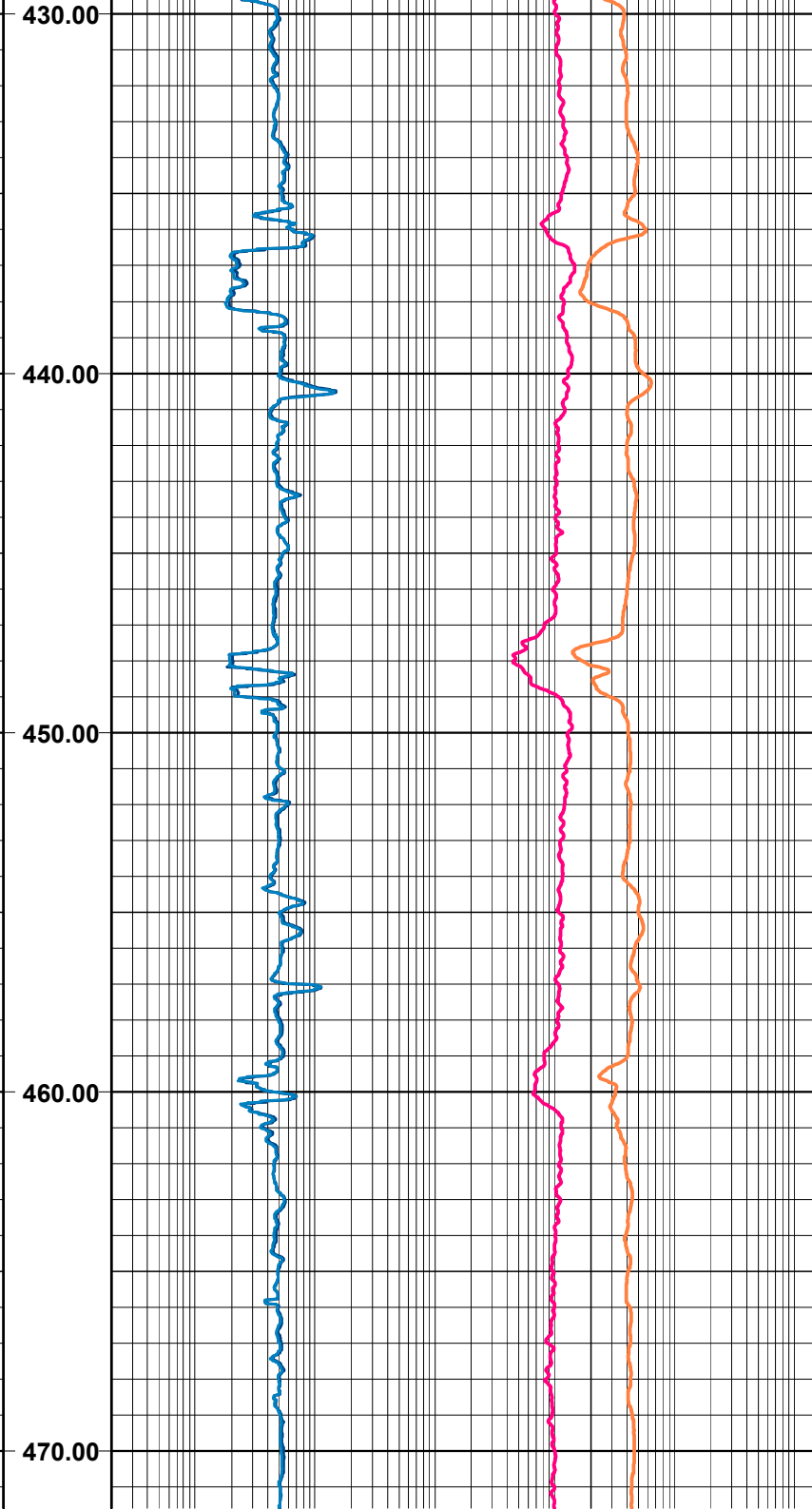
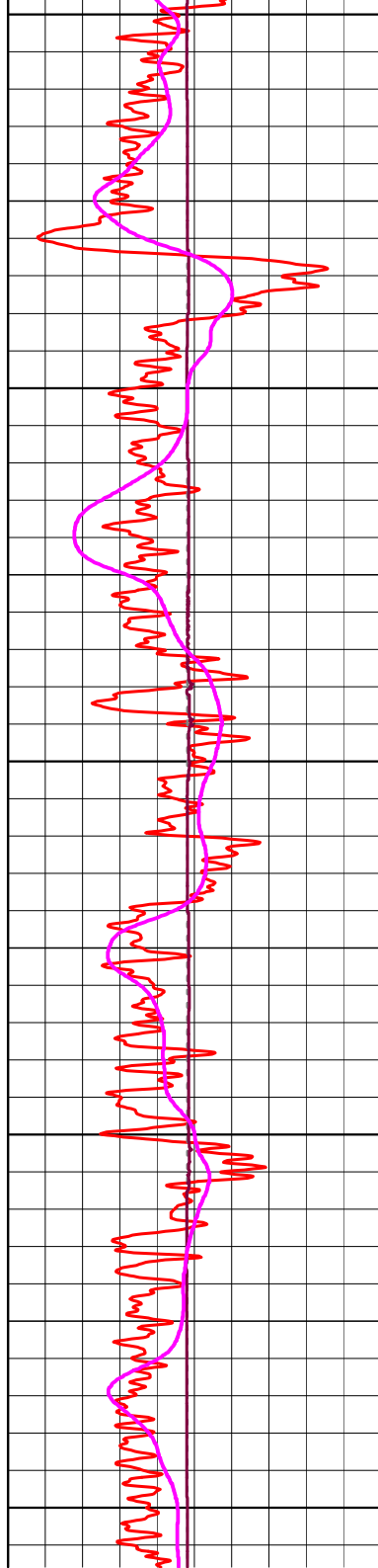
265.00
270.00
275.00
280.00
285.00
290.00
295.00
300.00

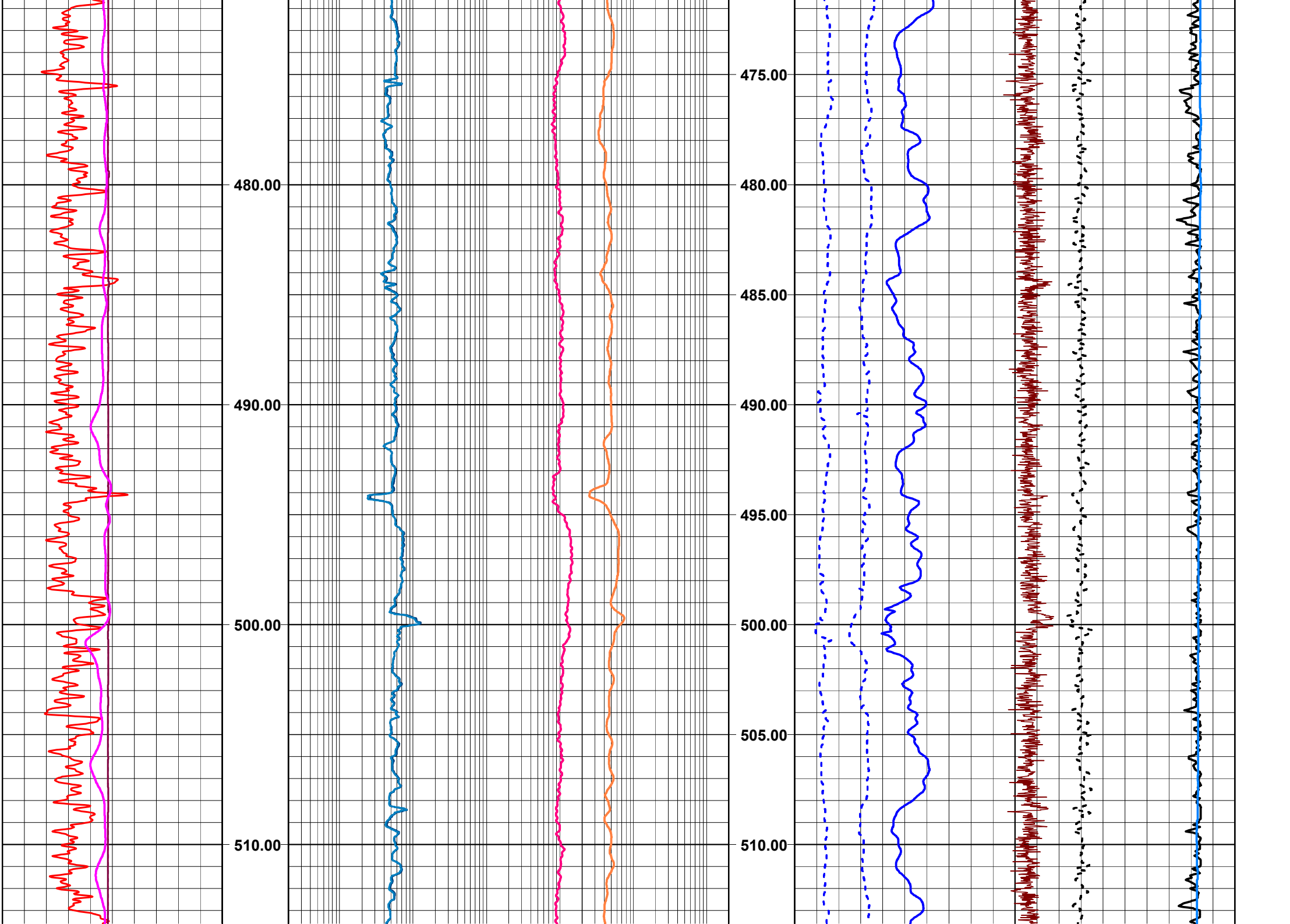


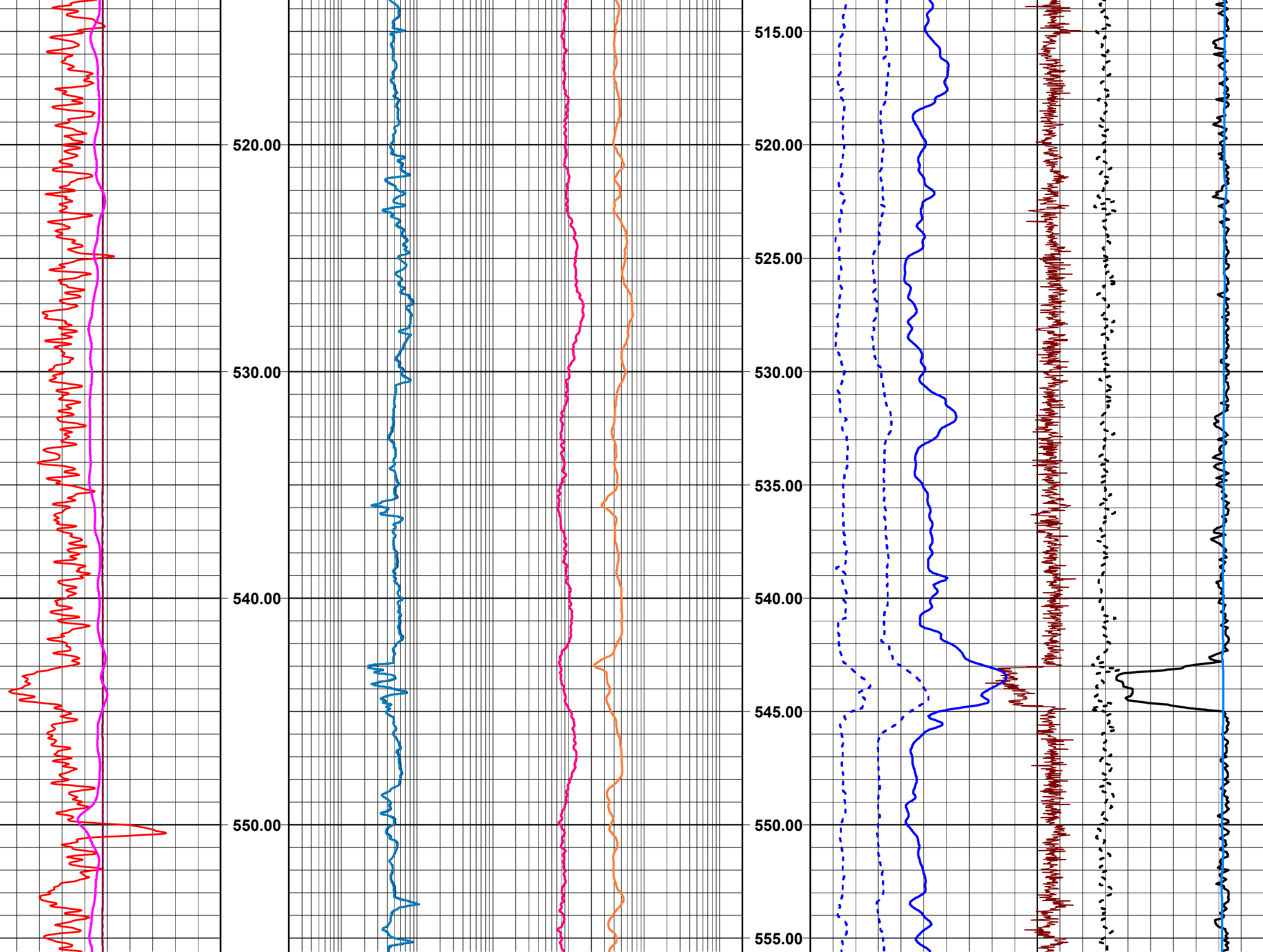


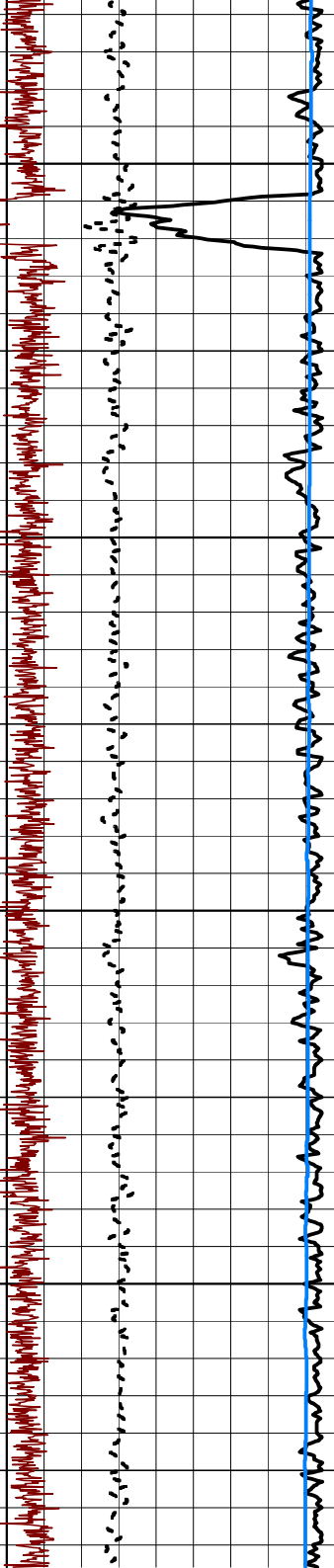
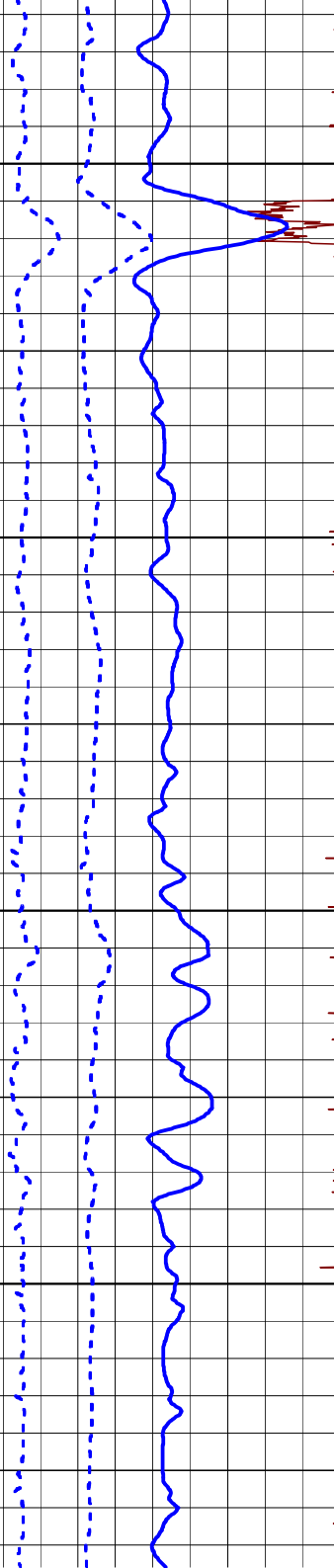
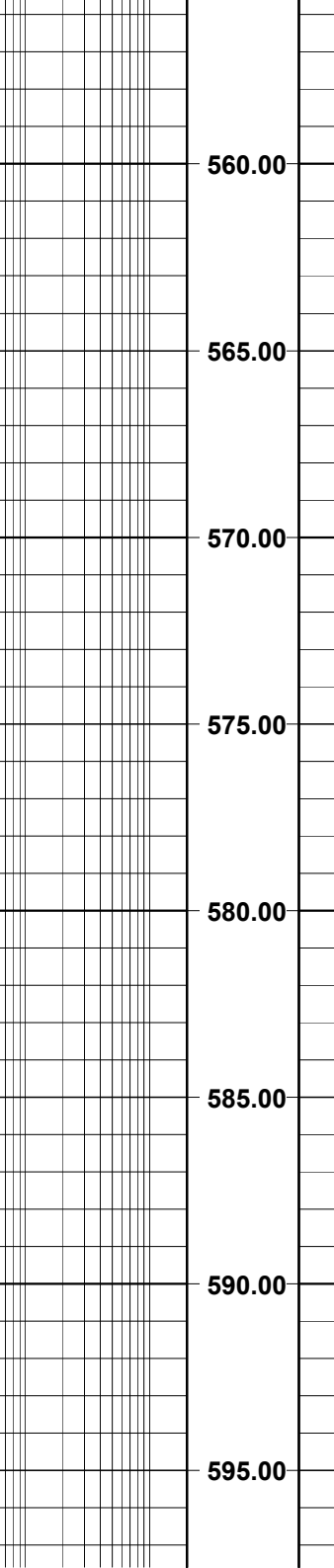
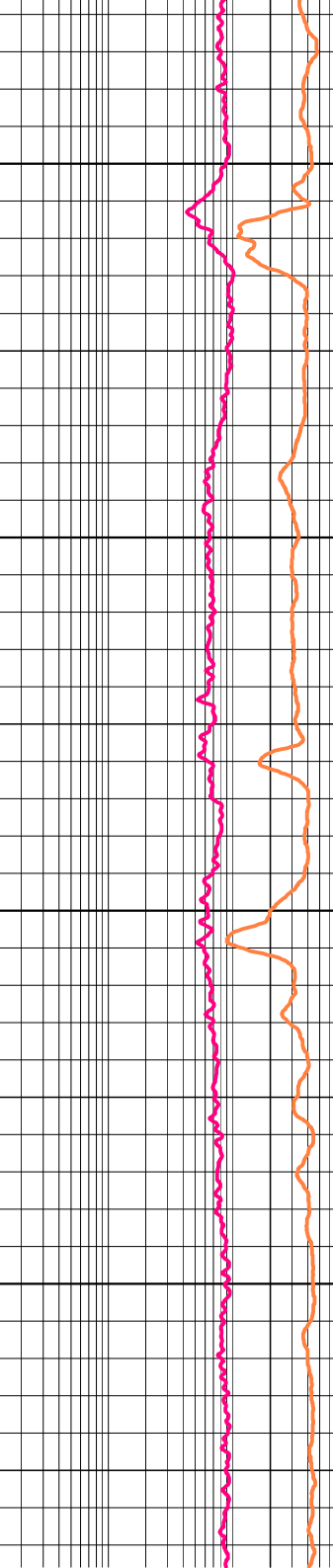
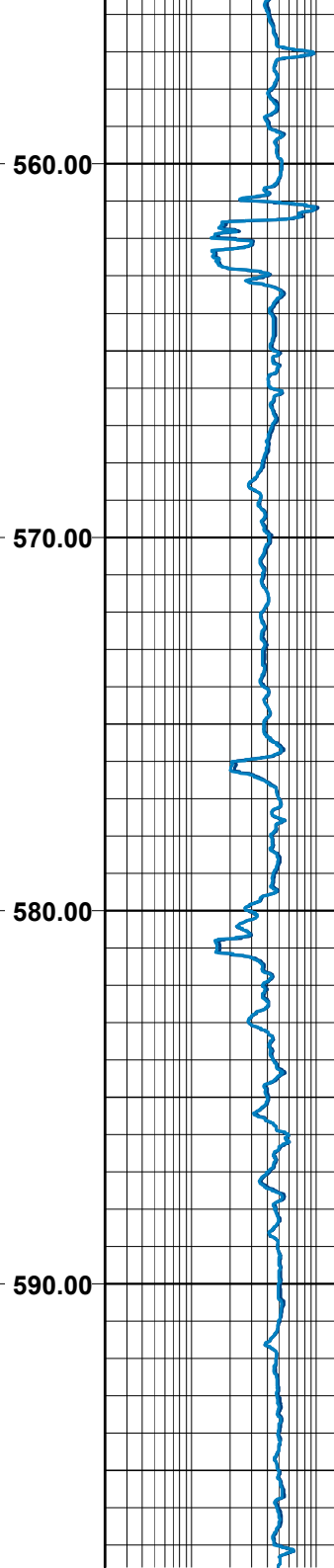
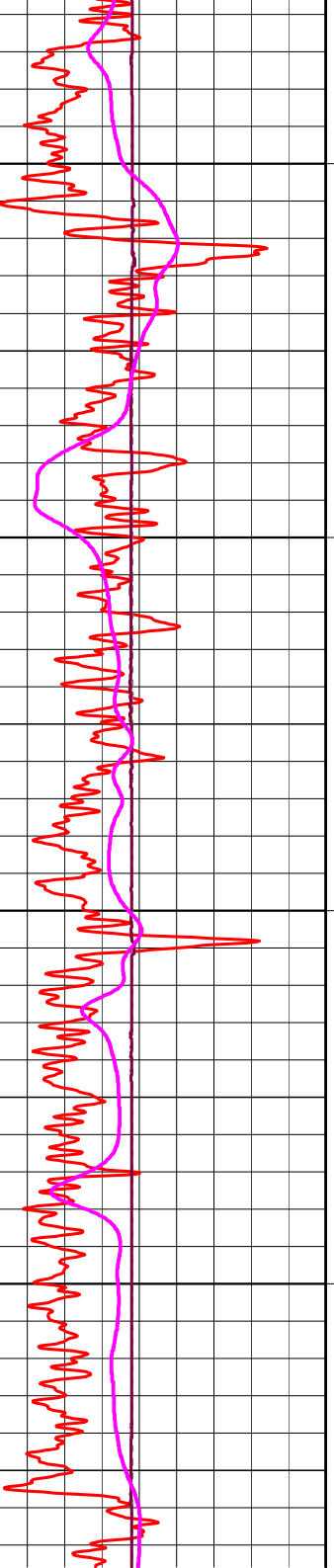




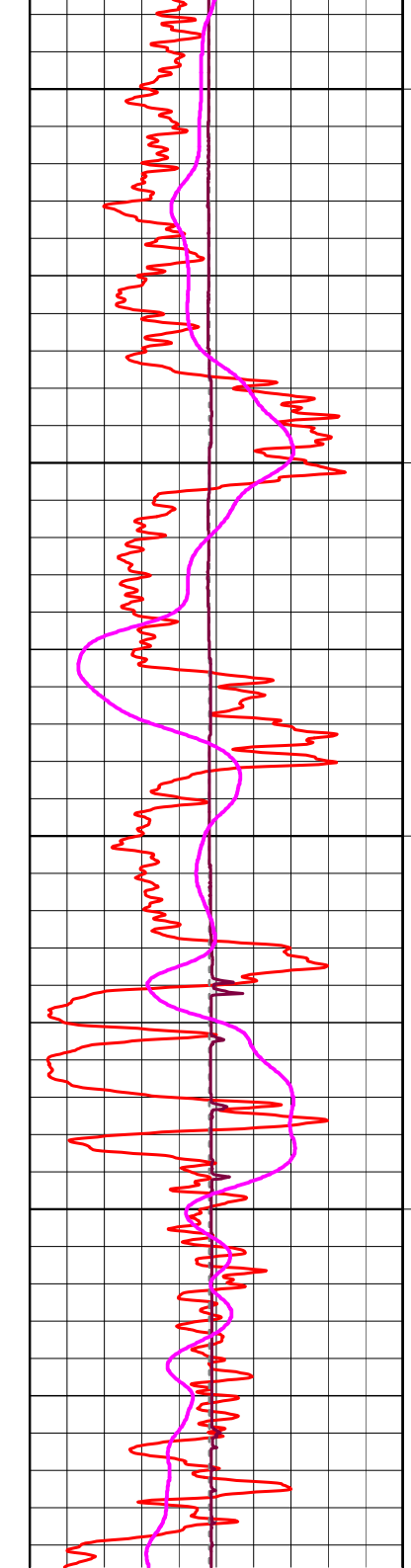




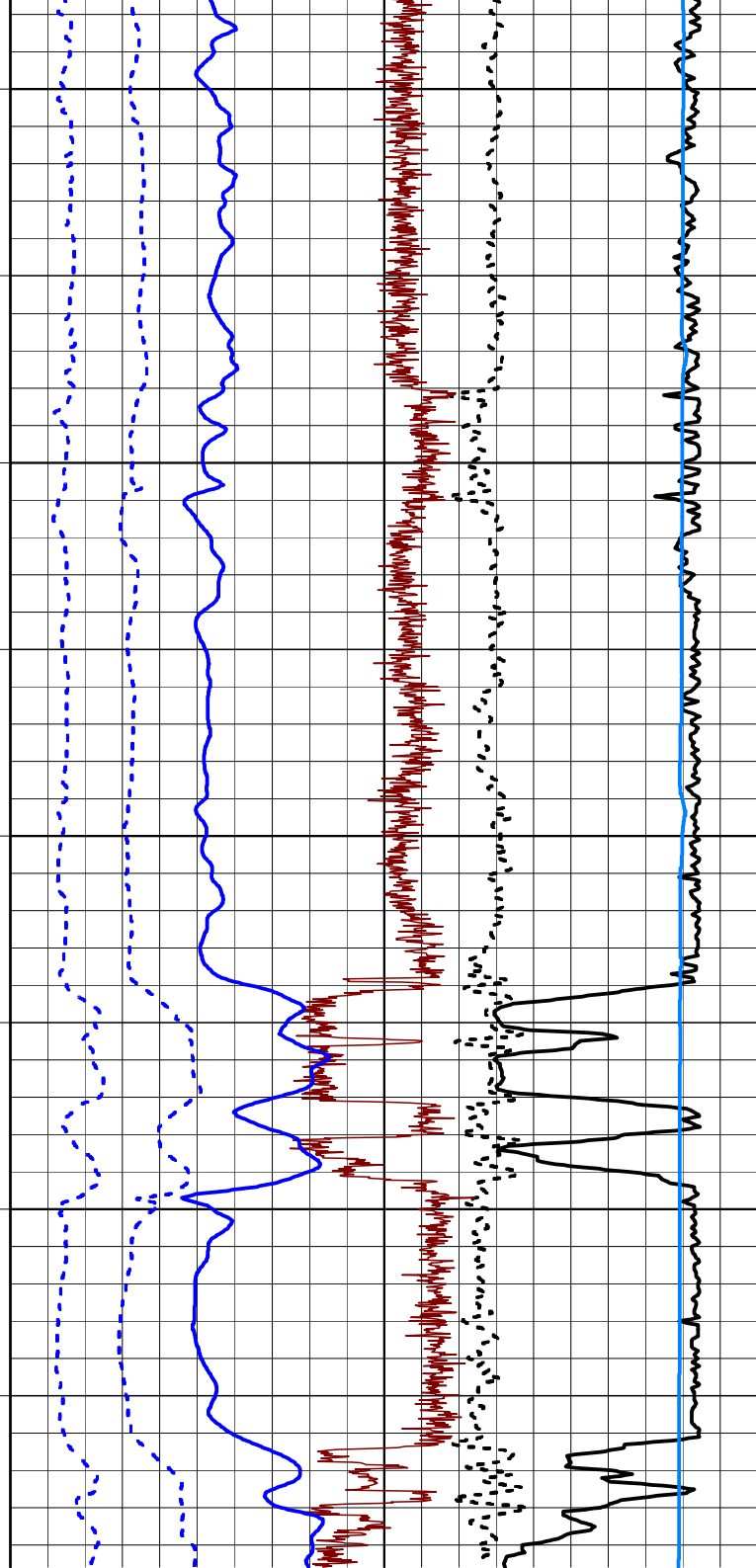
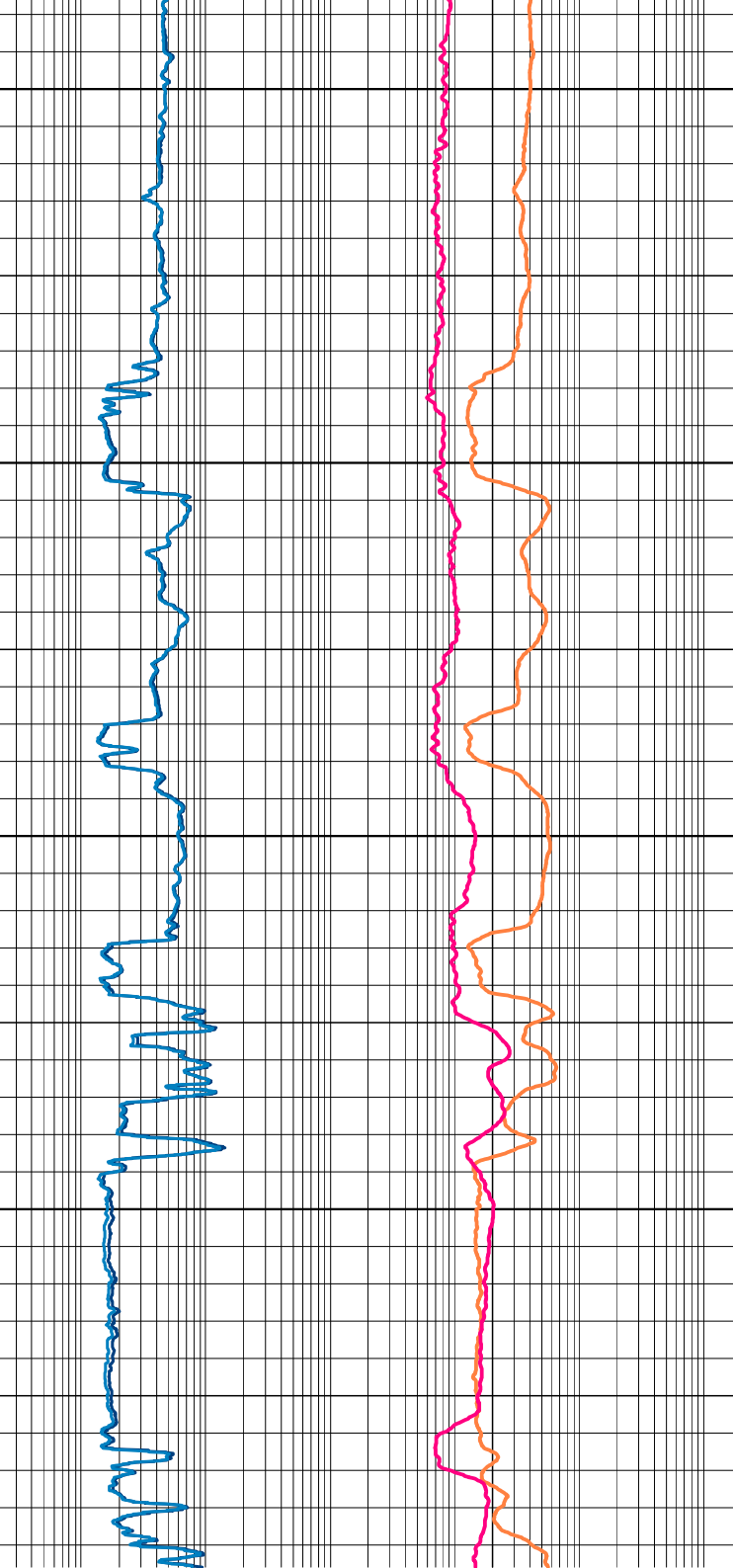


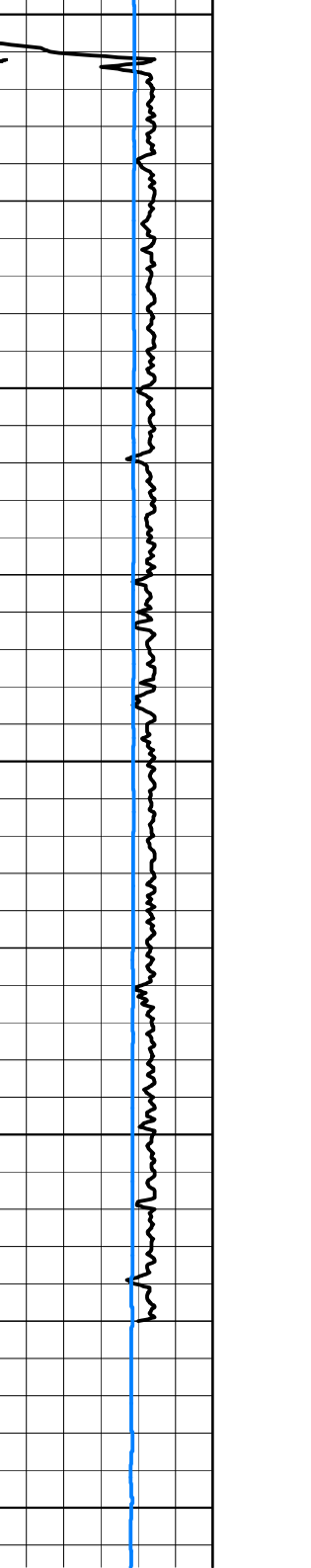
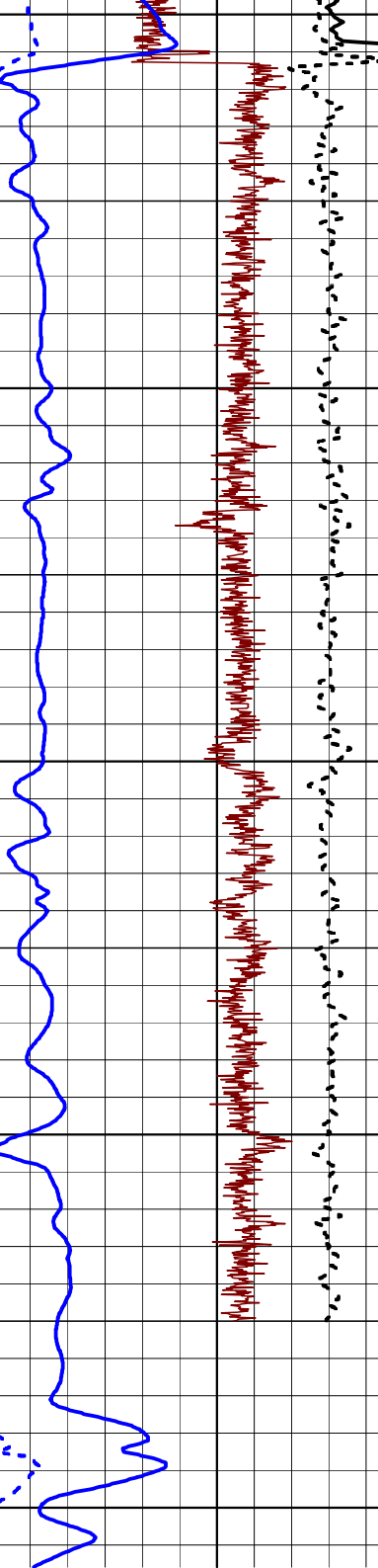
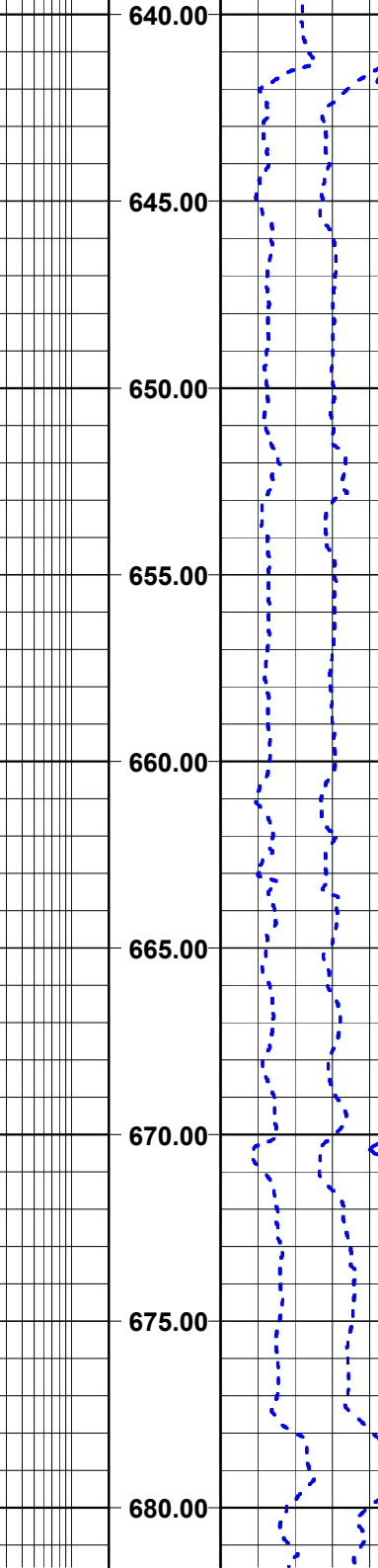
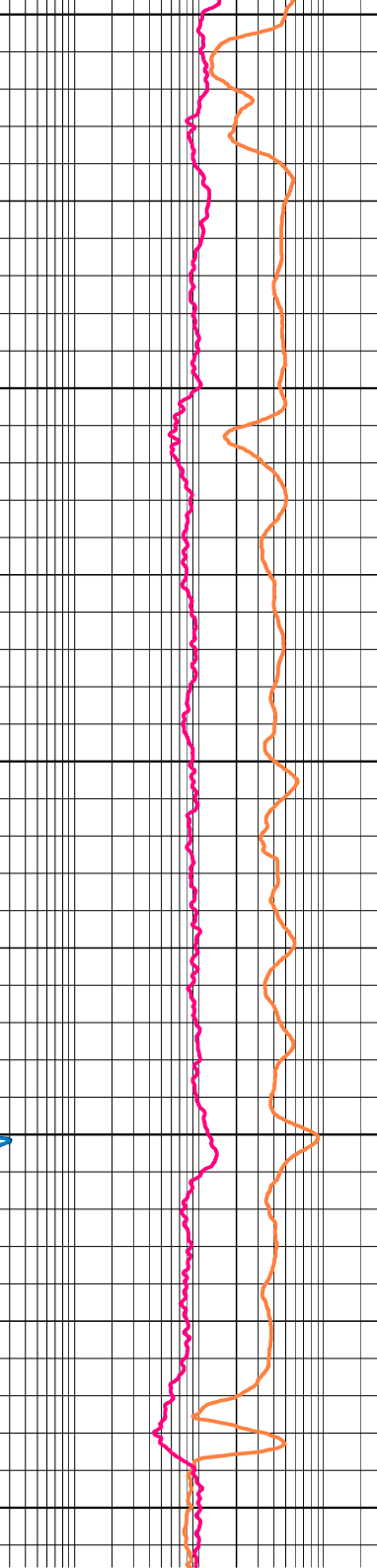
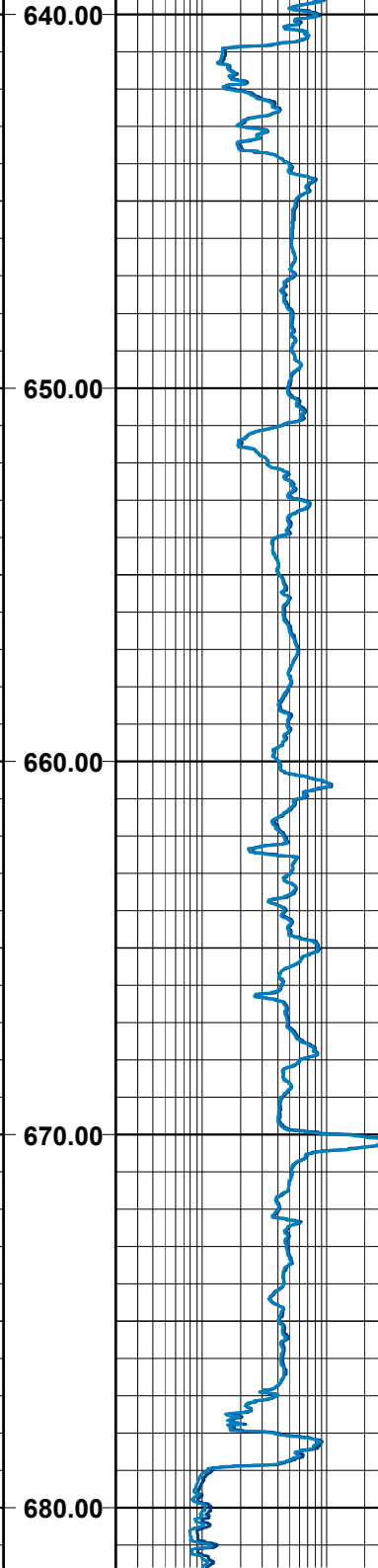
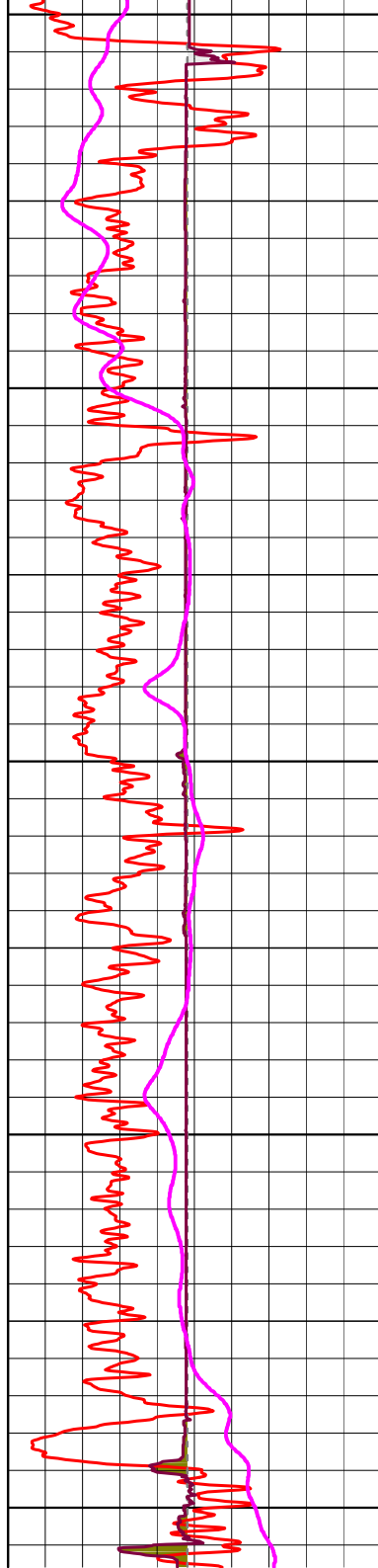


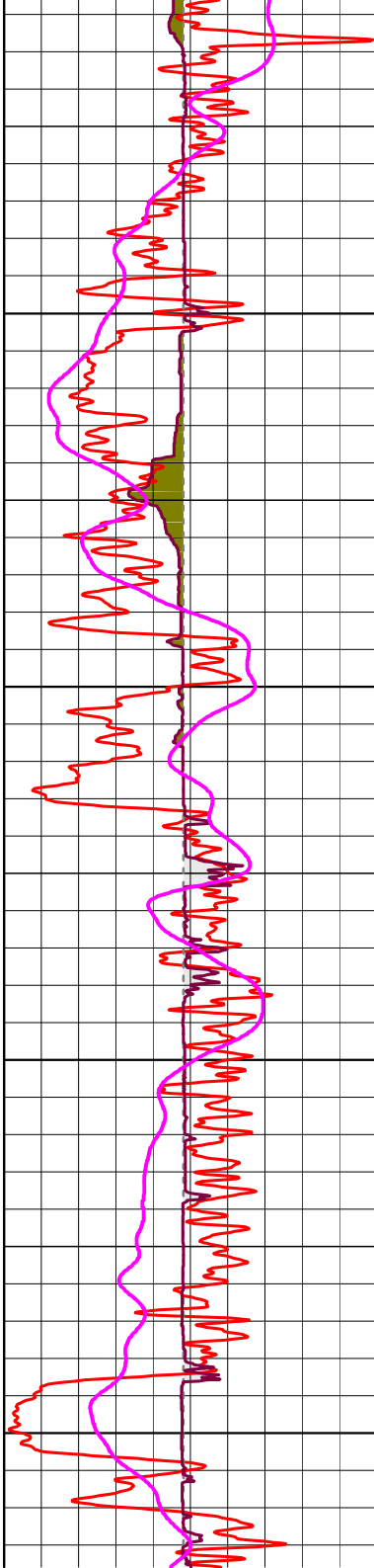
600.00
610.00
620.00
630.00



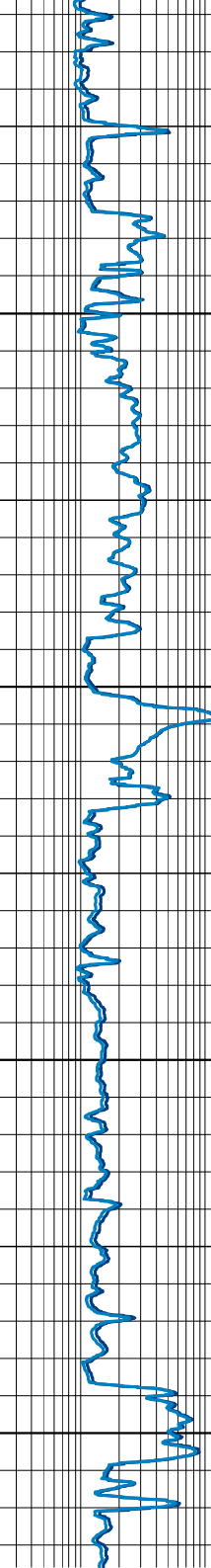
600.00
605.00
610.00
615.00
620.00
625.00
630.00
635.00



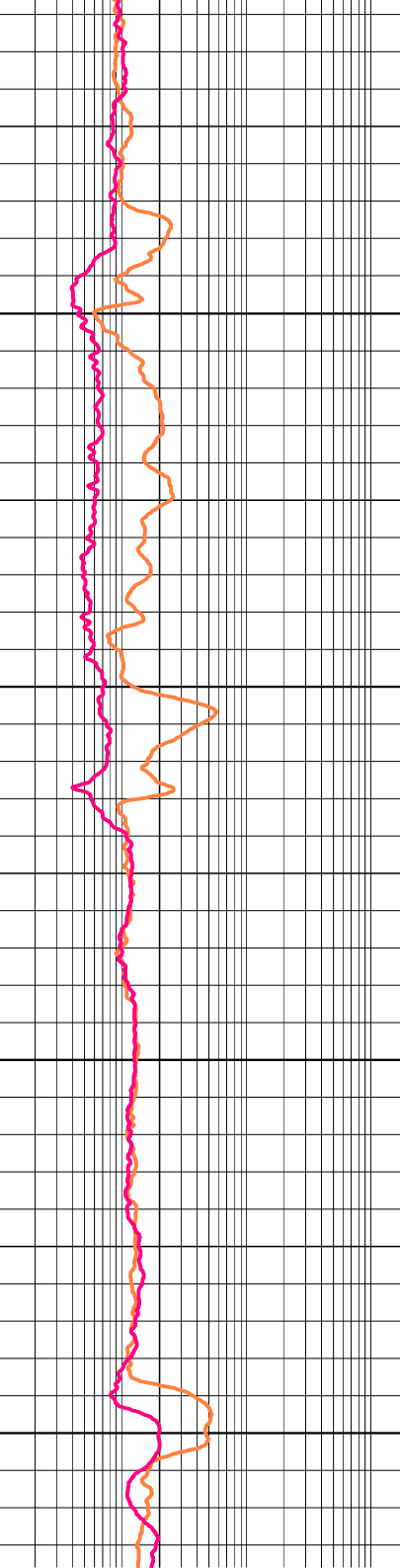




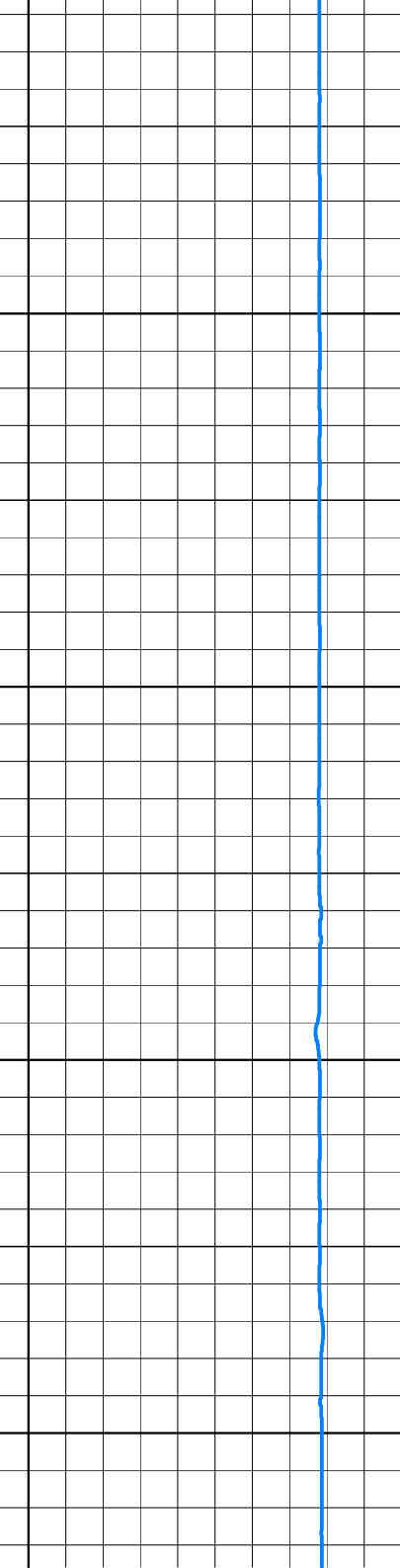
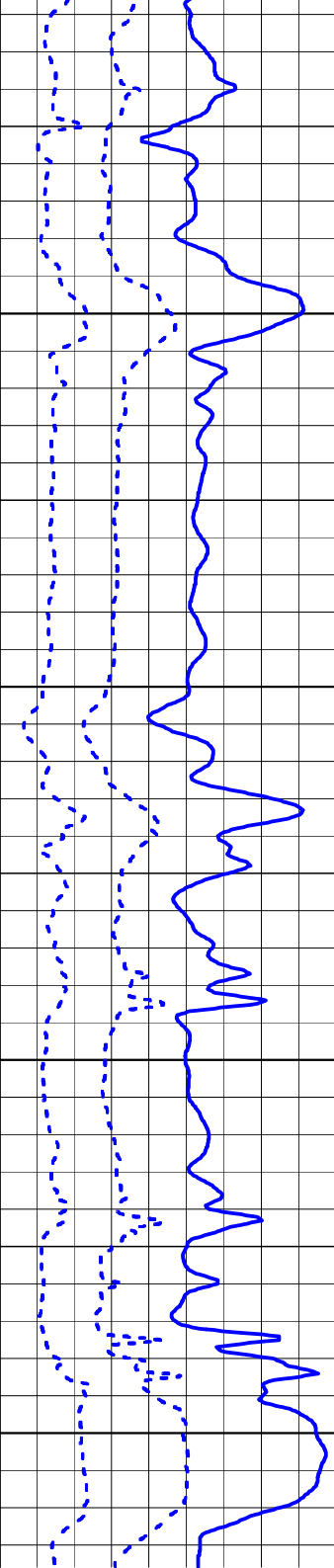
690.00
700.00
710.00
720.00

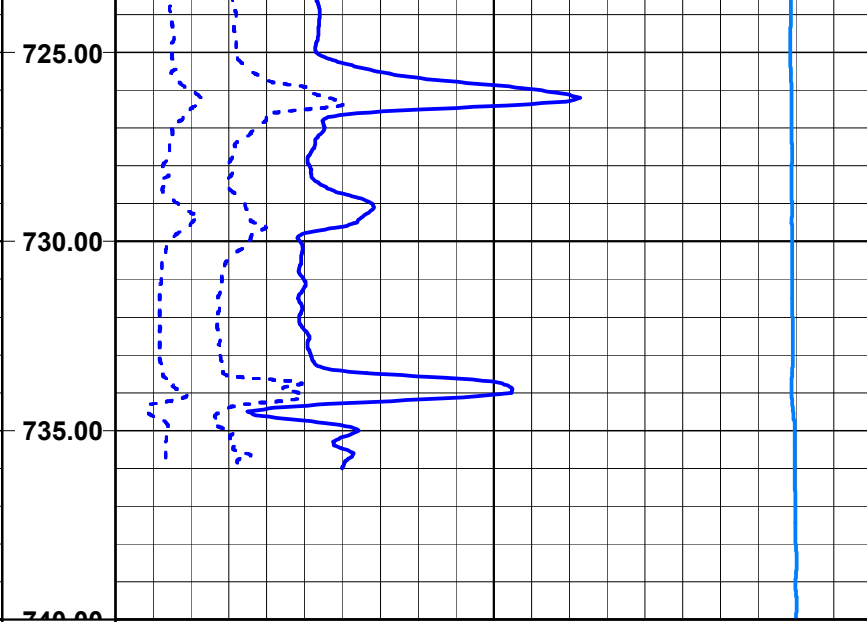
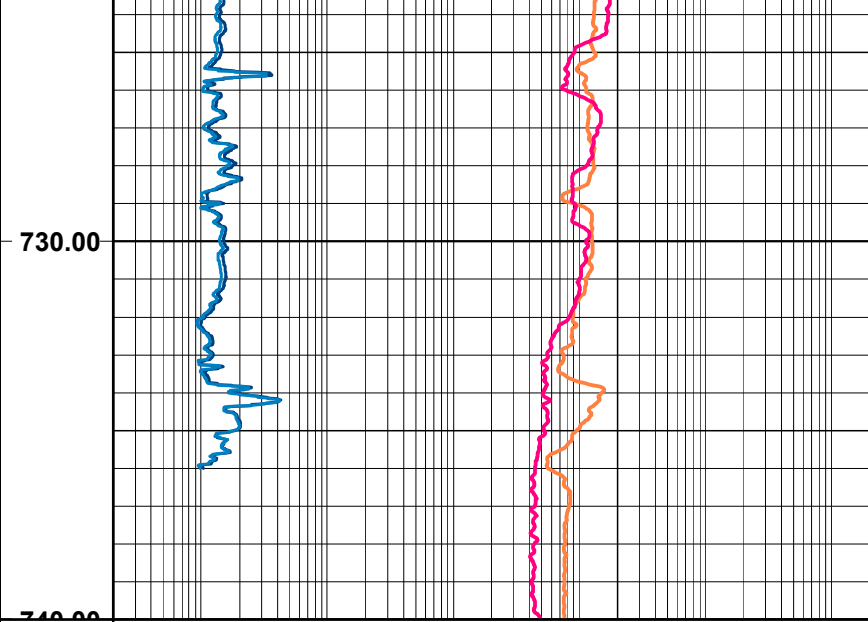
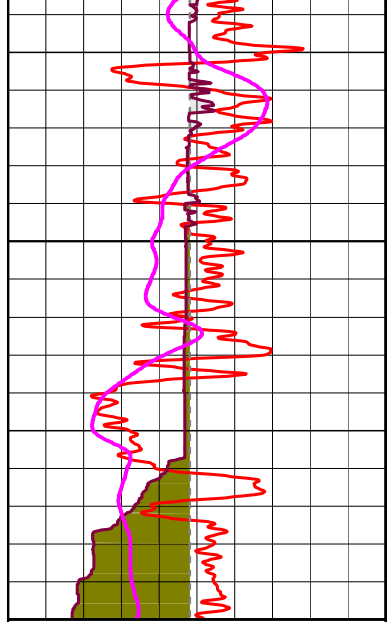


690.00
700.00
710.00
720.00



685.00
690.00
695.00
700.00
705.00
710.00
715.00
720.00





PG (API)	
0.0	300.0
Šr nominalna (mm)	
0.0	250.0
PŠr (mm)	
0.0	250.0
PS (mV)	
-200.0	1000.0

LLd (omm)	
2.0	2000.0
LLs (omm)	
2.0	2000.0
N16 (omm)	
2.0	2000.0
N64 (omm)	
2.0	2000.0

dRoB (g/cm3)	
-0.50	0.50
RoB (g/cm3)	
1.00	3.00
PGGk (CPS)	
25000.0	10000.0
PA dt (us/m)	
0.0	1000.0
PA t1 (us)	
200.0	1200.0
PA t2 (us)	
200.0	1200.0
POpl (omm)	
2.5	4.5