



**GRUPA POMIAROWA  
ZIELONA GÓRA**

**Arkusz: Zestawienie krzywych  
pomiarowych**

**Nr ark: P- 8108 / 2014**

65-705 Zielona Góra  
ul. Nałtowa 3

tel.(068) 3295417, 3240762  
fax. (068) 3255212

## **P O M I A R Y   G E O F I Z Y C Z N E**

Otwór:

**ZIP-5**

Rejon:

Górnośląskie Zagłębie Węglowe

Odcinek pomiarowy:

108.0 - 740.0 m

Wysokość npm.:

b.d. m

Skala głębokości:

1 : 200

Data pomiarów:

10.03.2014

Wysokość podbudowy:

0.5 m

Grupa pomiarowa:

TGP-Z

Głębokość otw. wg pomiaru:

740.0 m

Kierownik:

mgr inż. J.Puchacewicz

Głębokość otw. wg wierceń:

740.0 m

Operatorzy:

T.Hanus

Średnica otworu:

120 mm

Typ laborat. geofizycznego:

GeoVista

Głębokość rur. wg pomiaru:

108.0 m

Typ kabla:

3/16" coaxial

Głębokość rur. wg wierceń:

108.0 m

Opracowujący:

mgr inż. T.Fryziak

Średnica wewn. rur:

5 1/2 cale  
131 mm

Weryfikator:

inż. R.Burliiga

**Parametry płuczki:**

Rodzaj płuczki:

bentonitowo-polimerowa

Wiskozja:

38 s/1000cm<sup>3</sup>

Gęstość:

1.02 g/cm<sup>3</sup>

Zapiaszczanie:

b.d. %

Wytężymałość strukt.:

b.d. j.szir.

Oporność płuczki:

3.717 omm

Zasolenie:

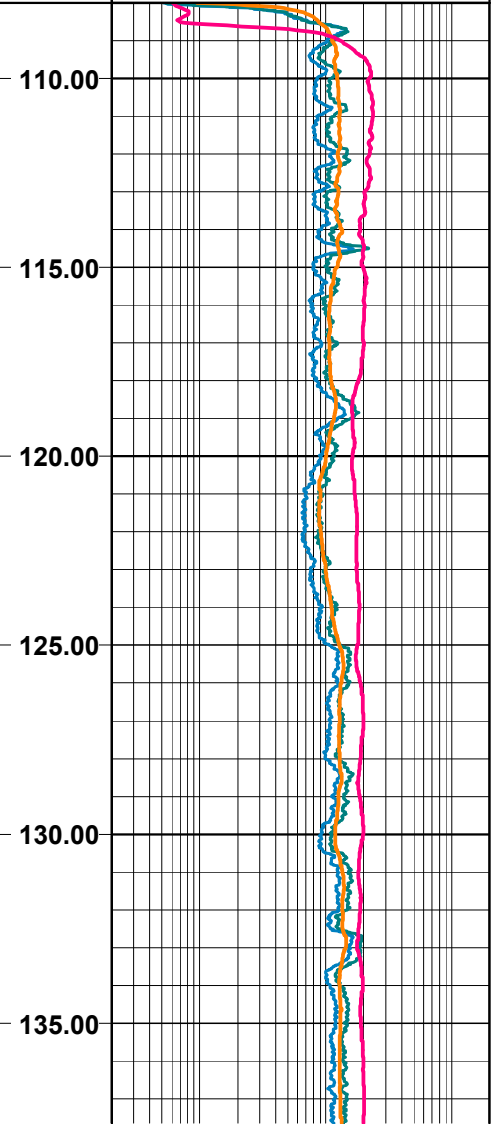
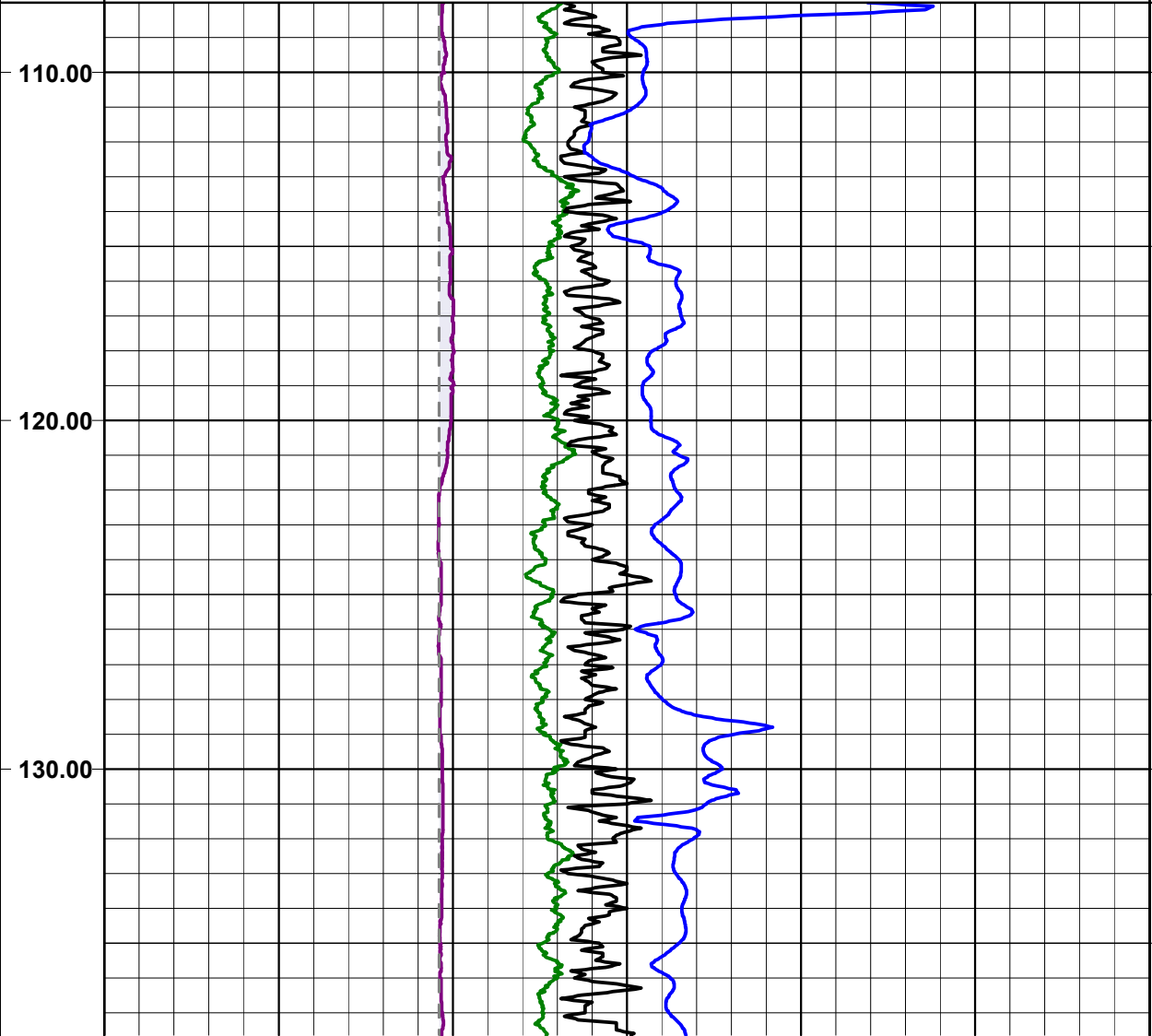
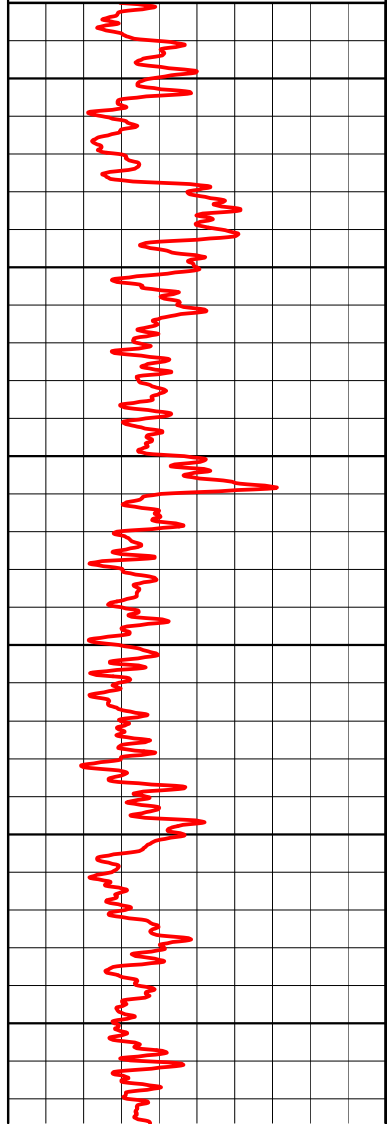
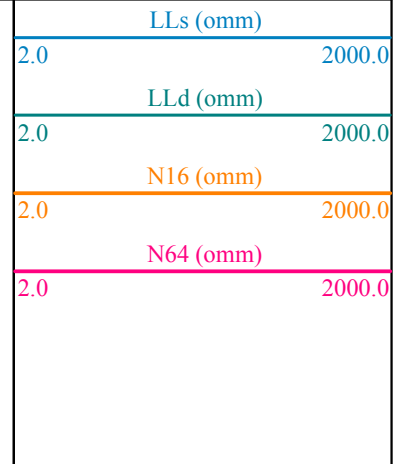
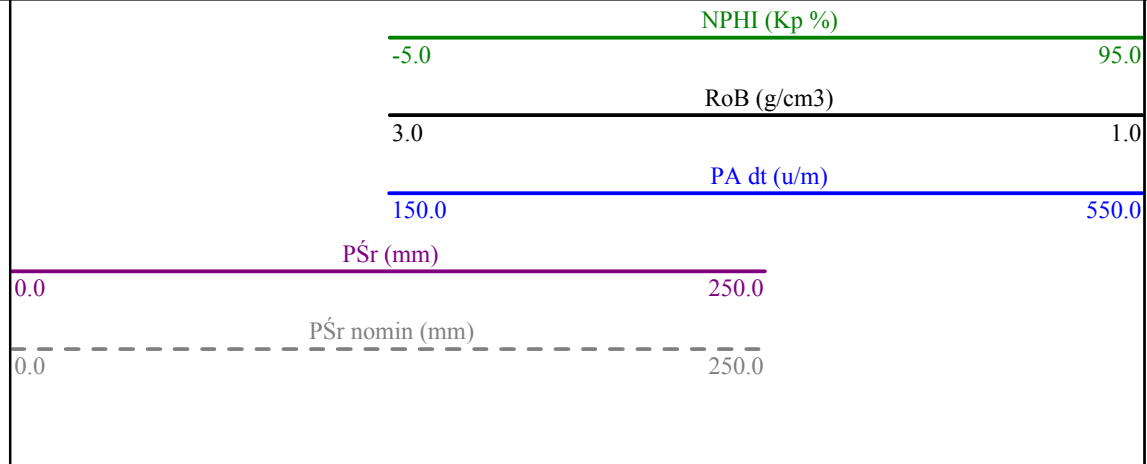
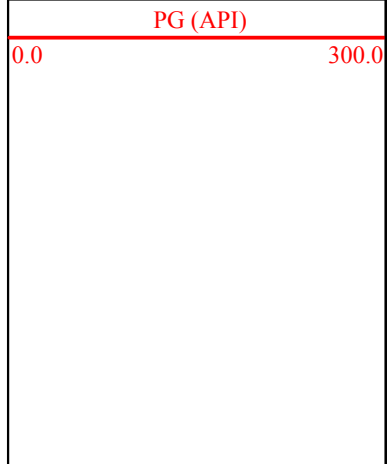
b.d. g/l

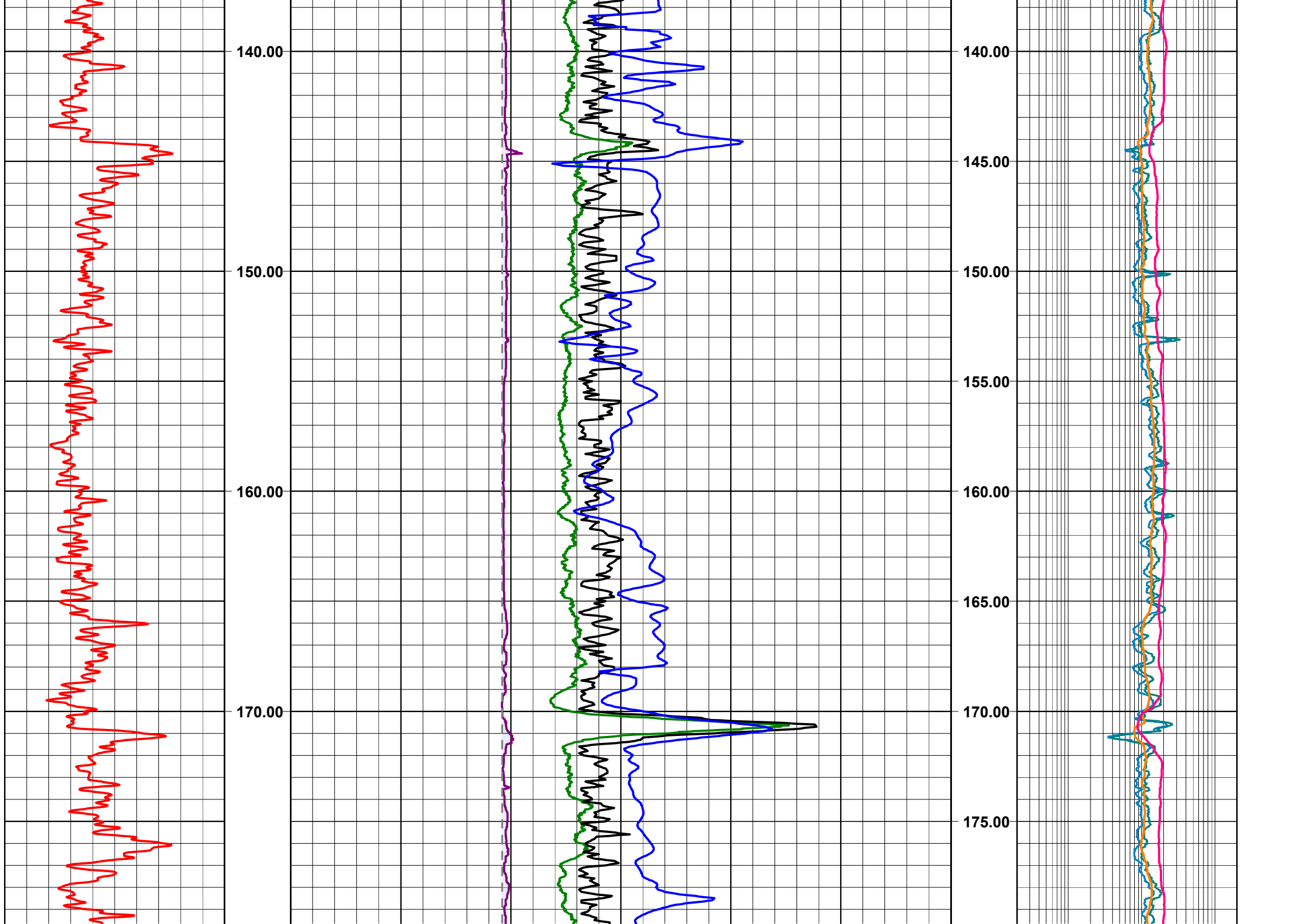
w temperaturze:

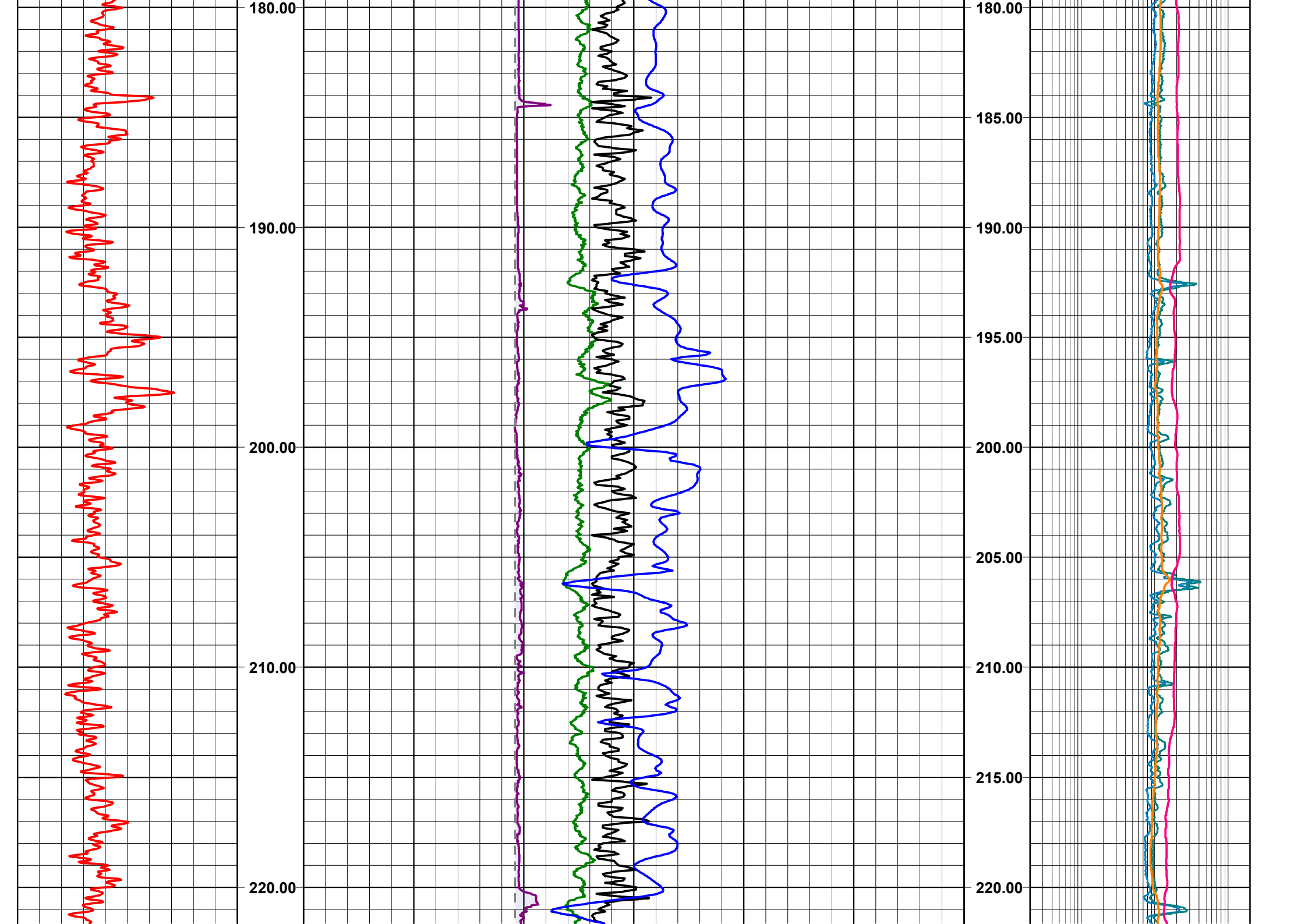
17.5 st C

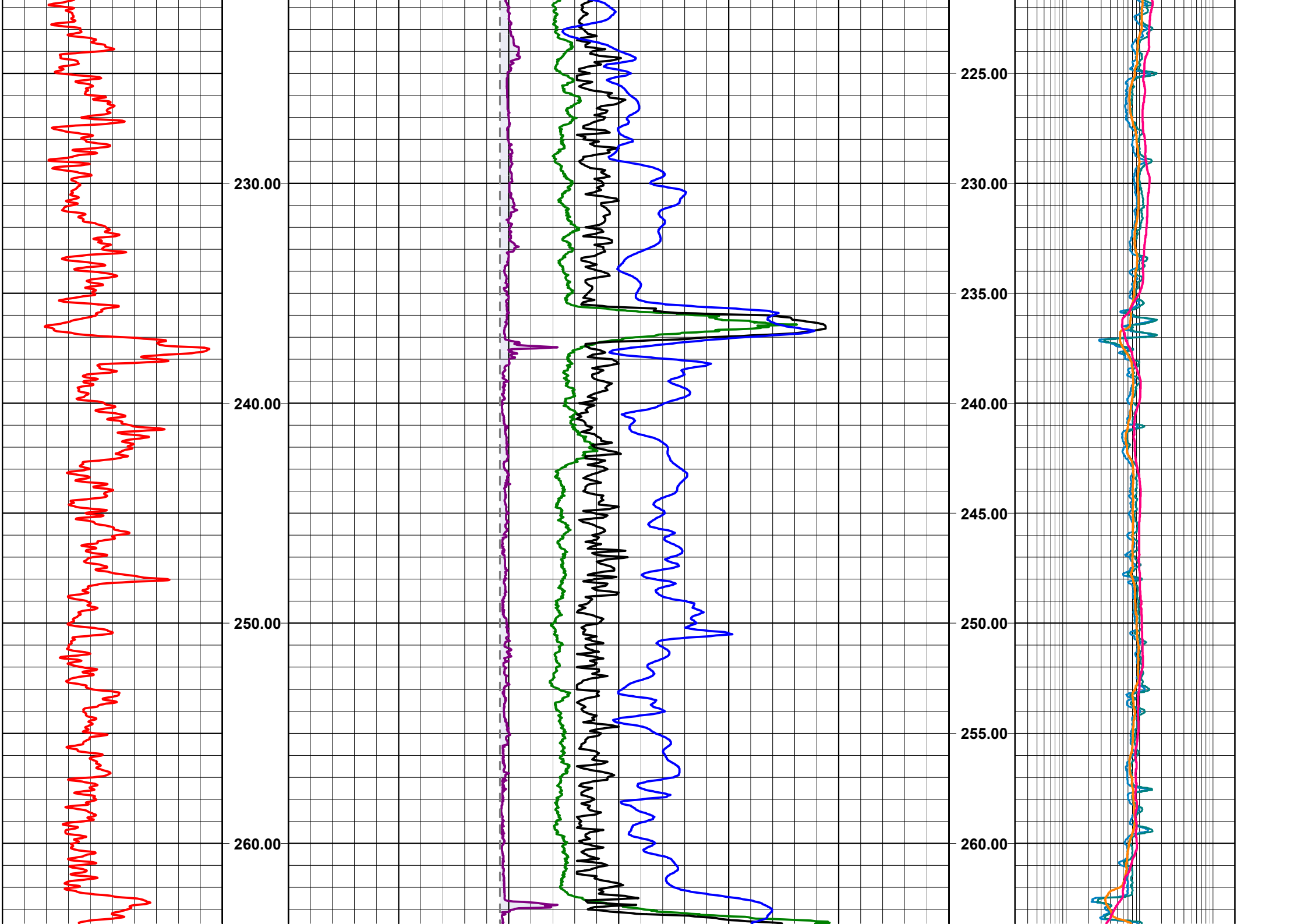
Filtracja:

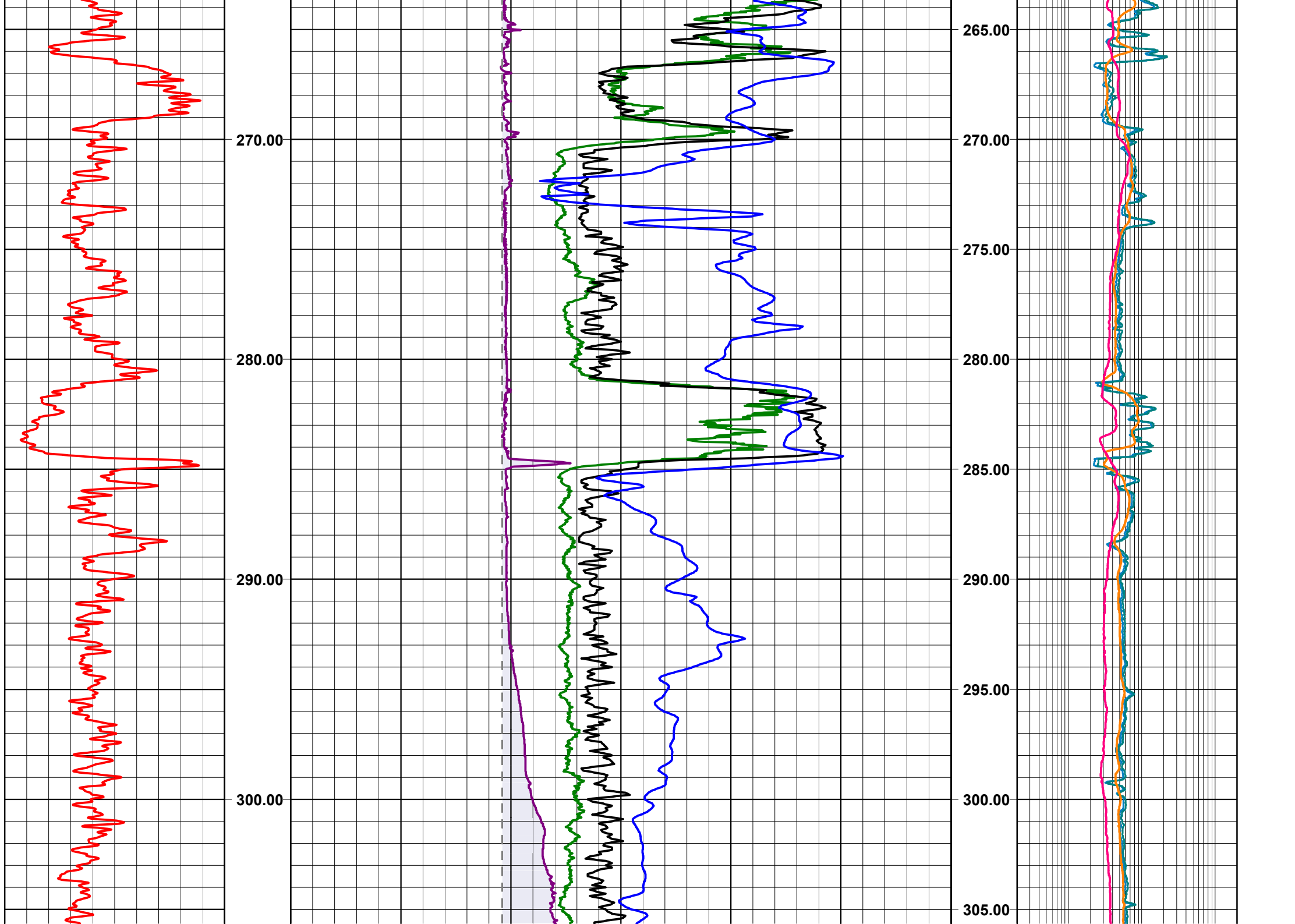
16.0 cm<sup>3</sup>

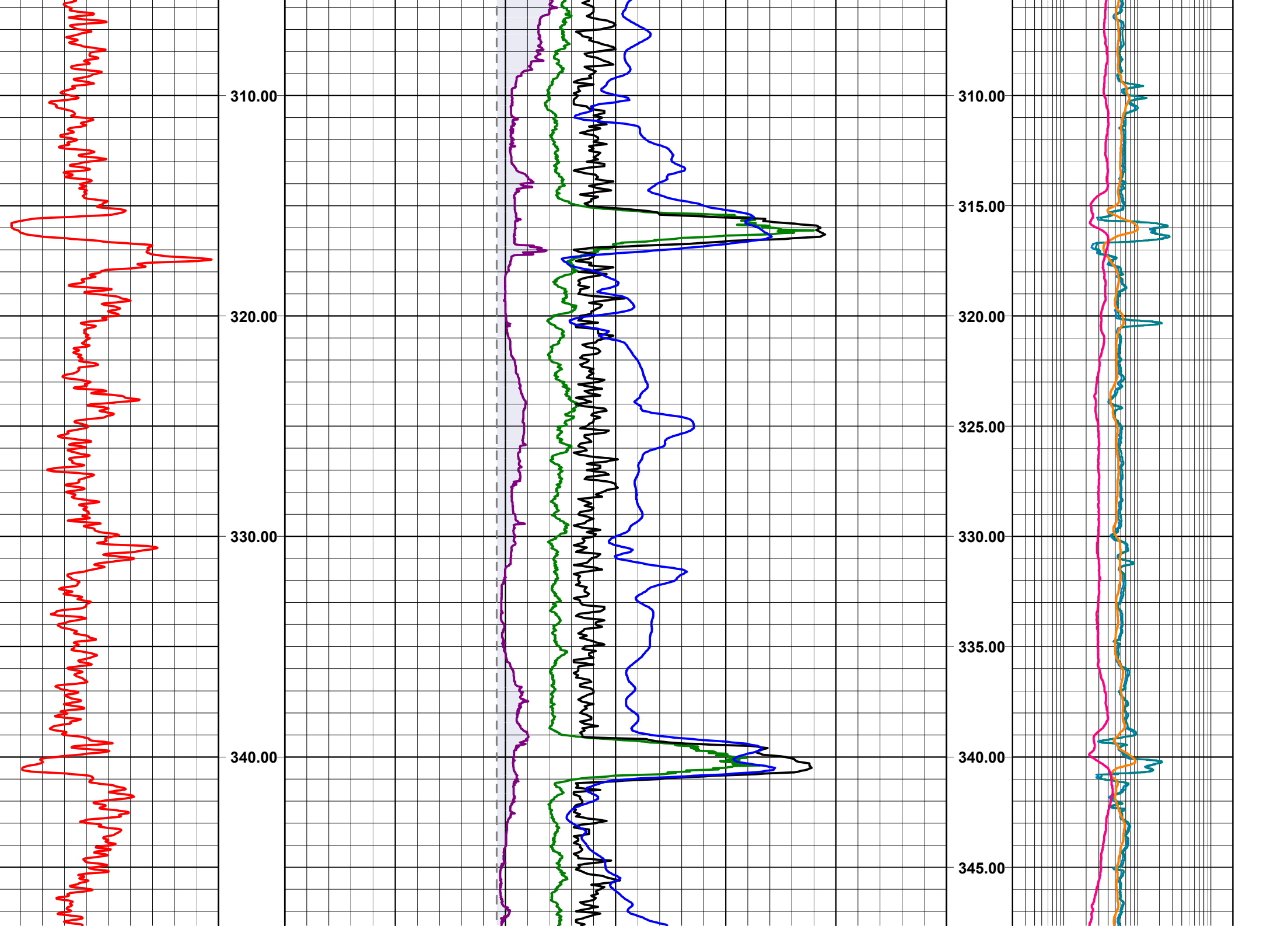


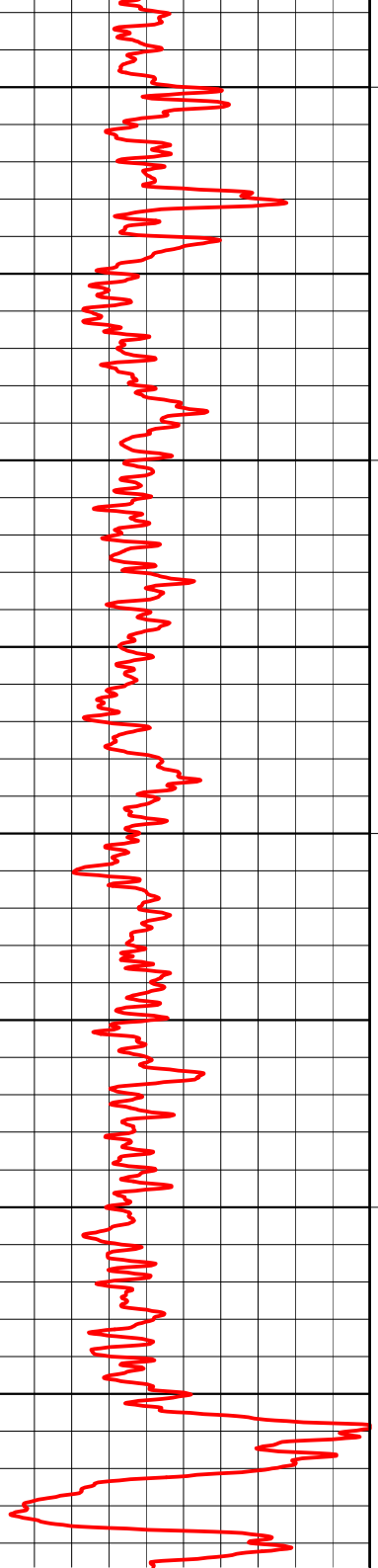




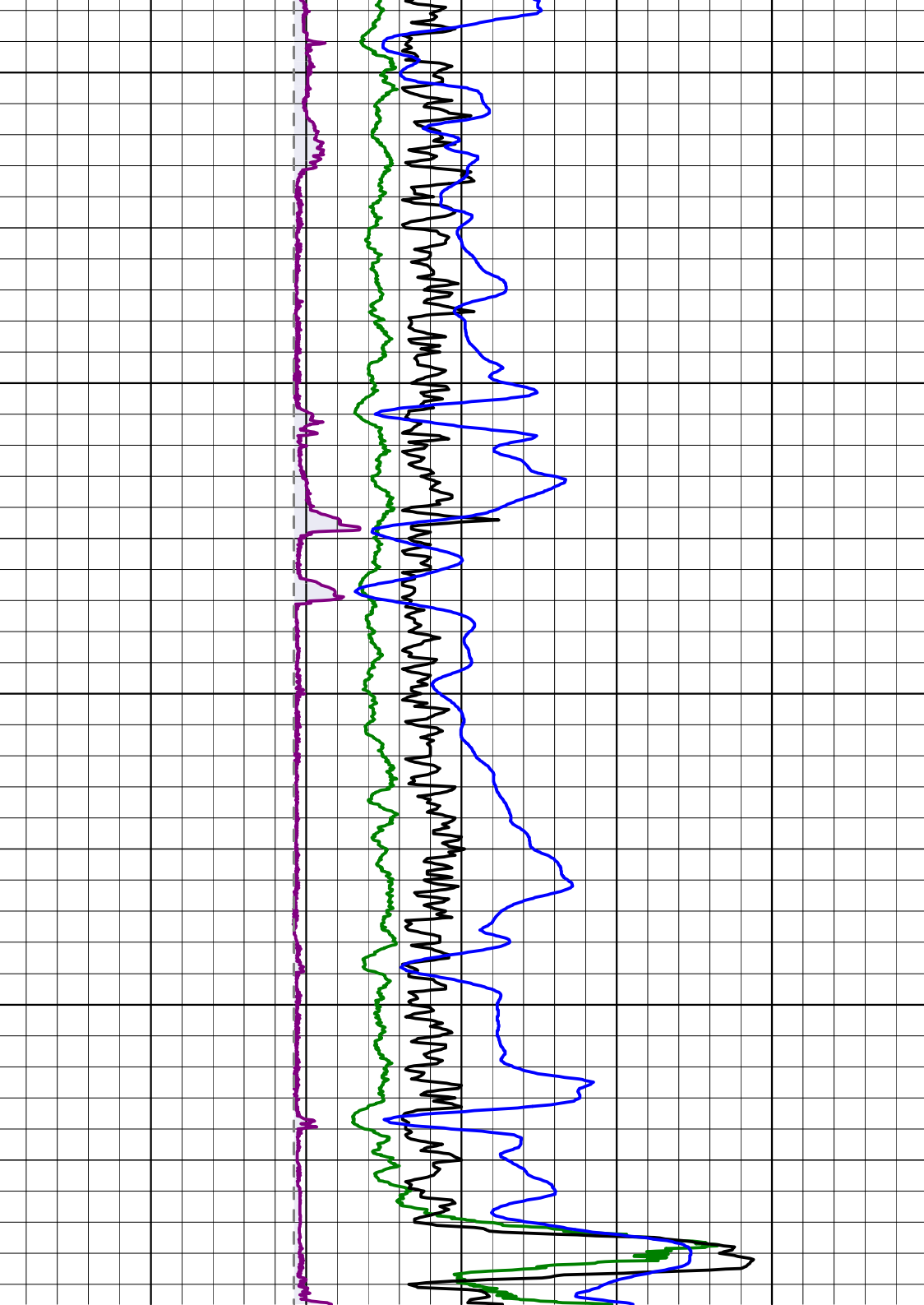




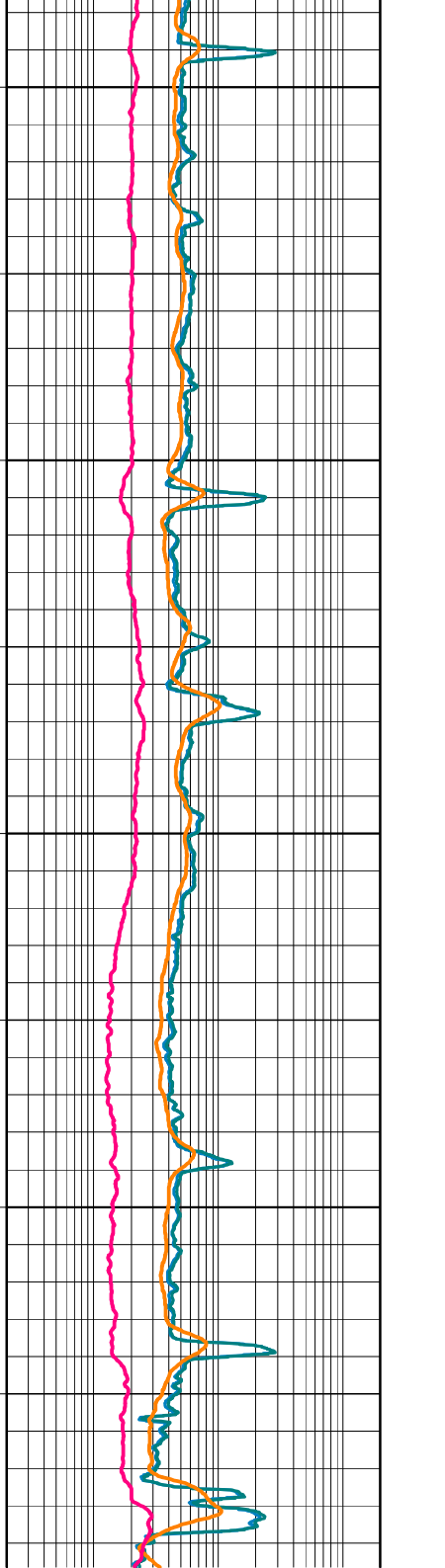




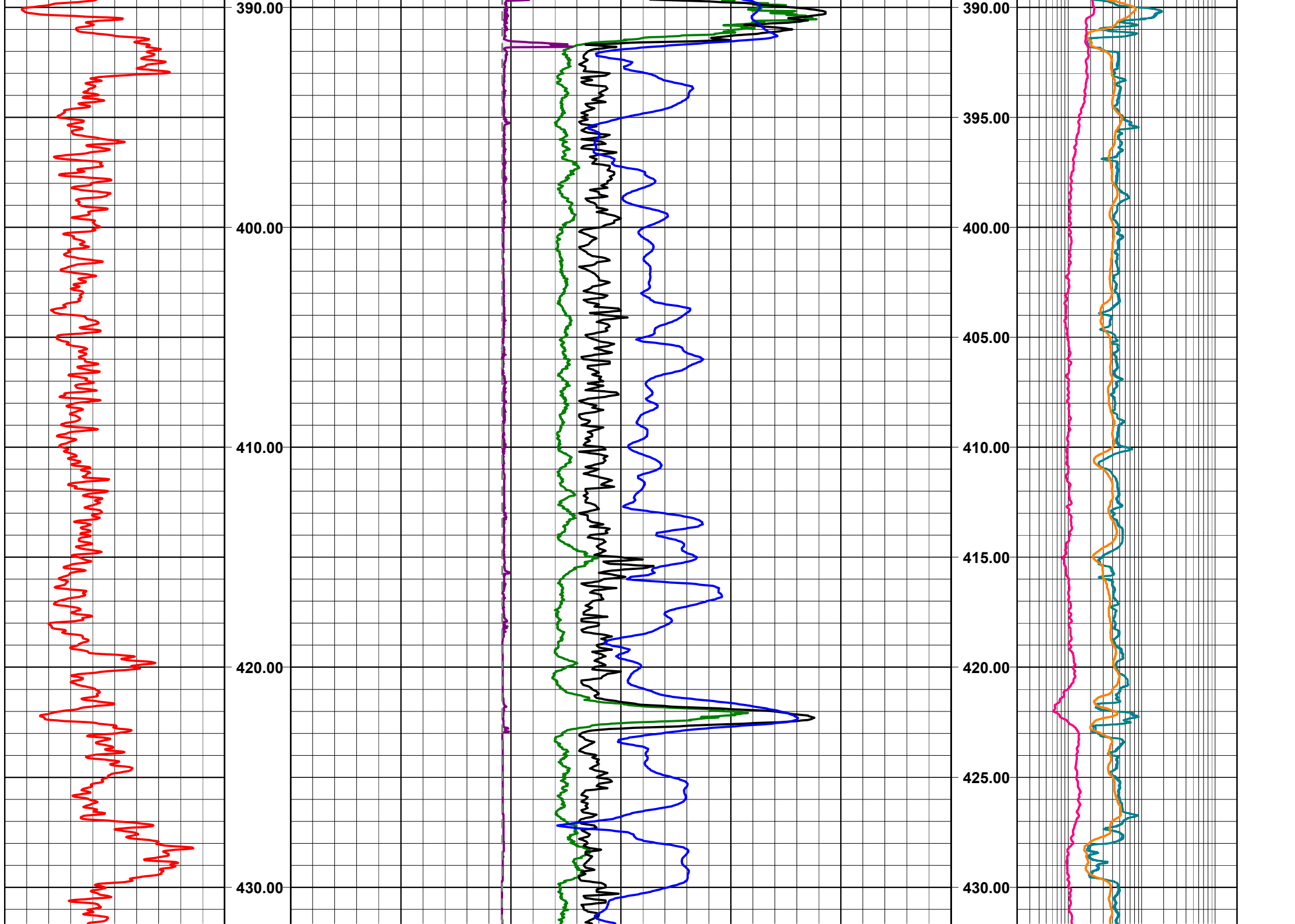
350.00  
360.00  
370.00  
380.00

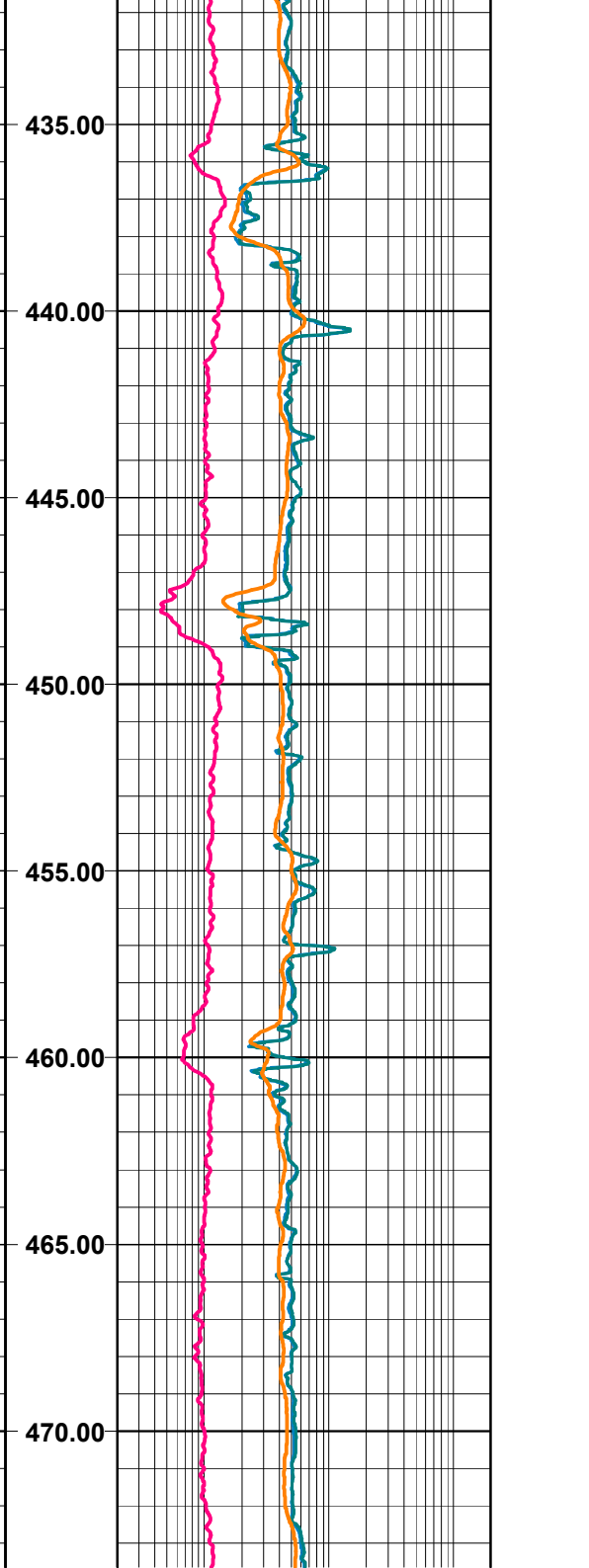
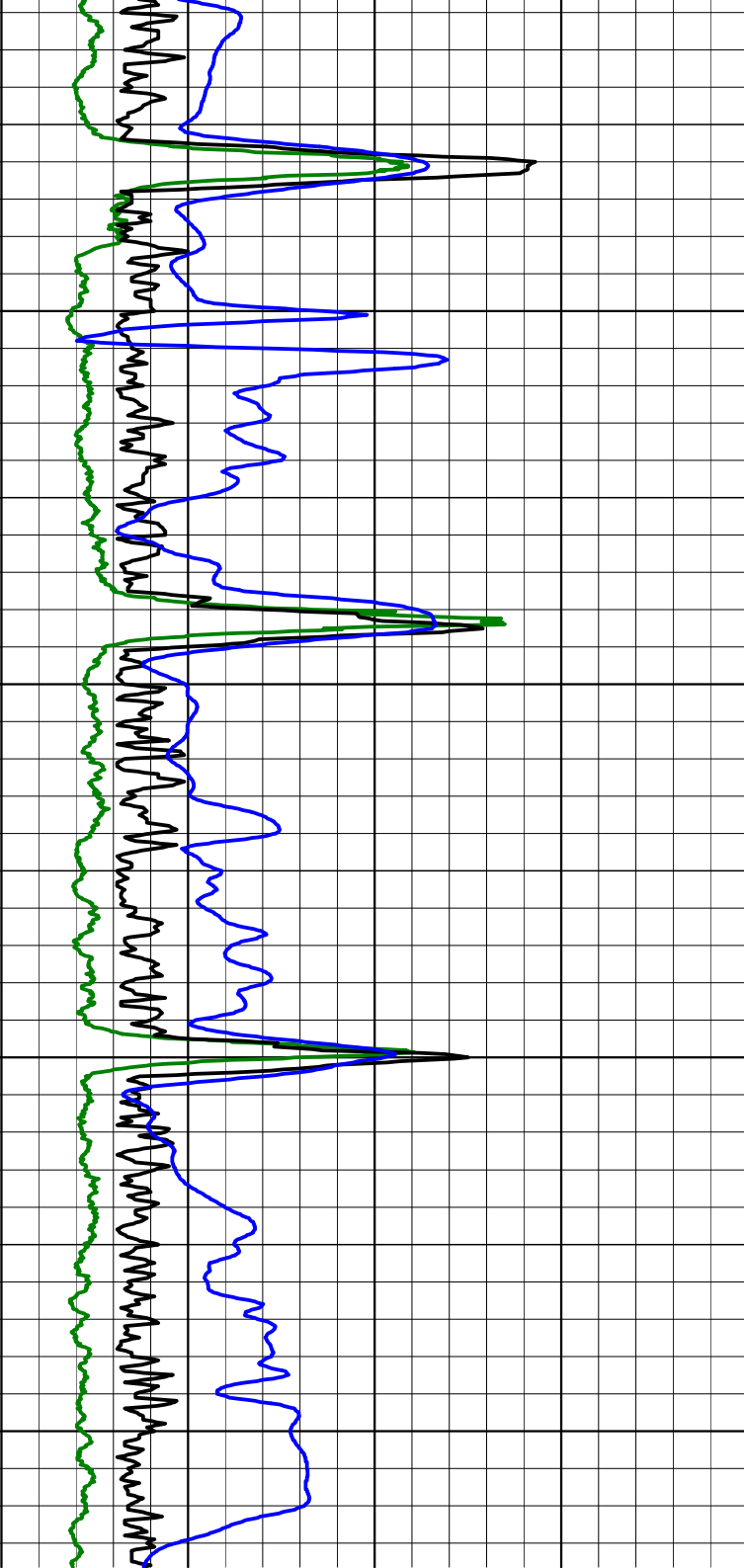
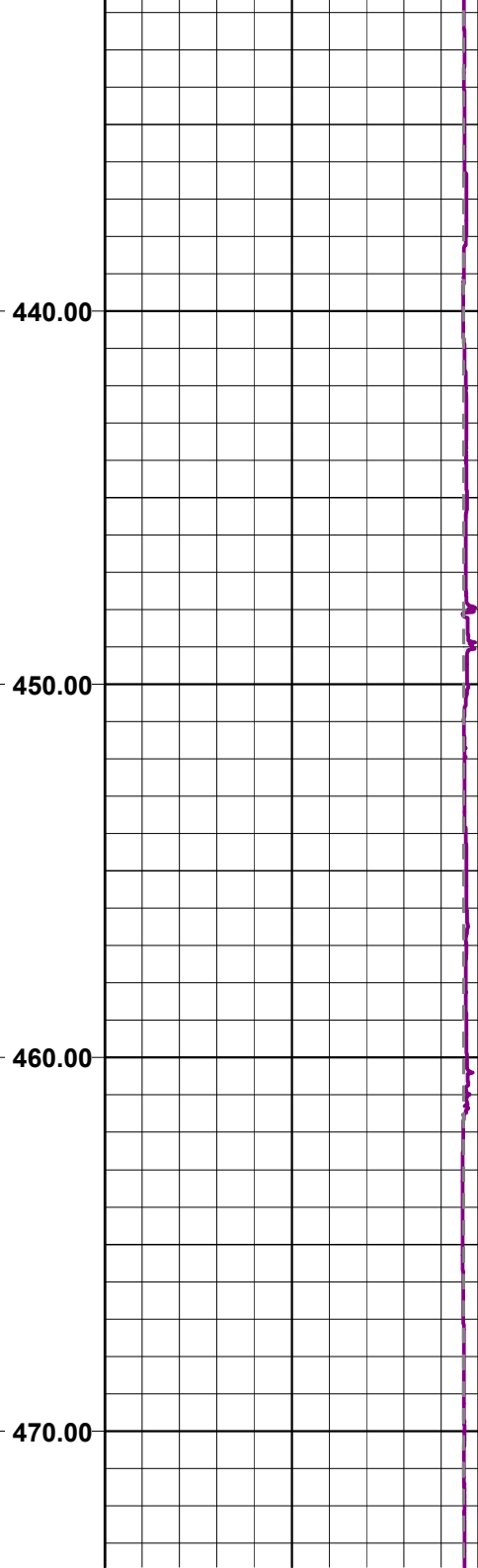
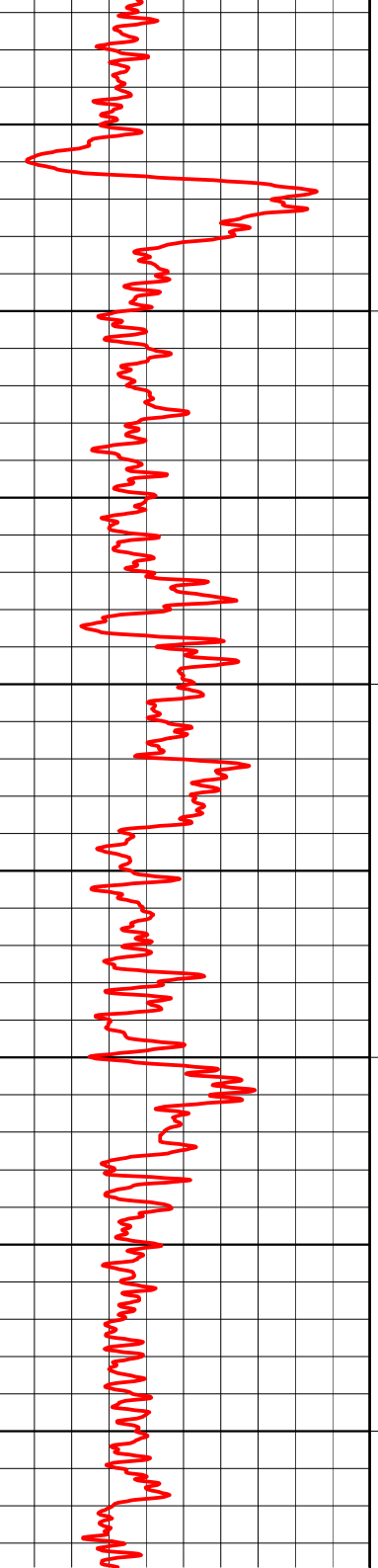


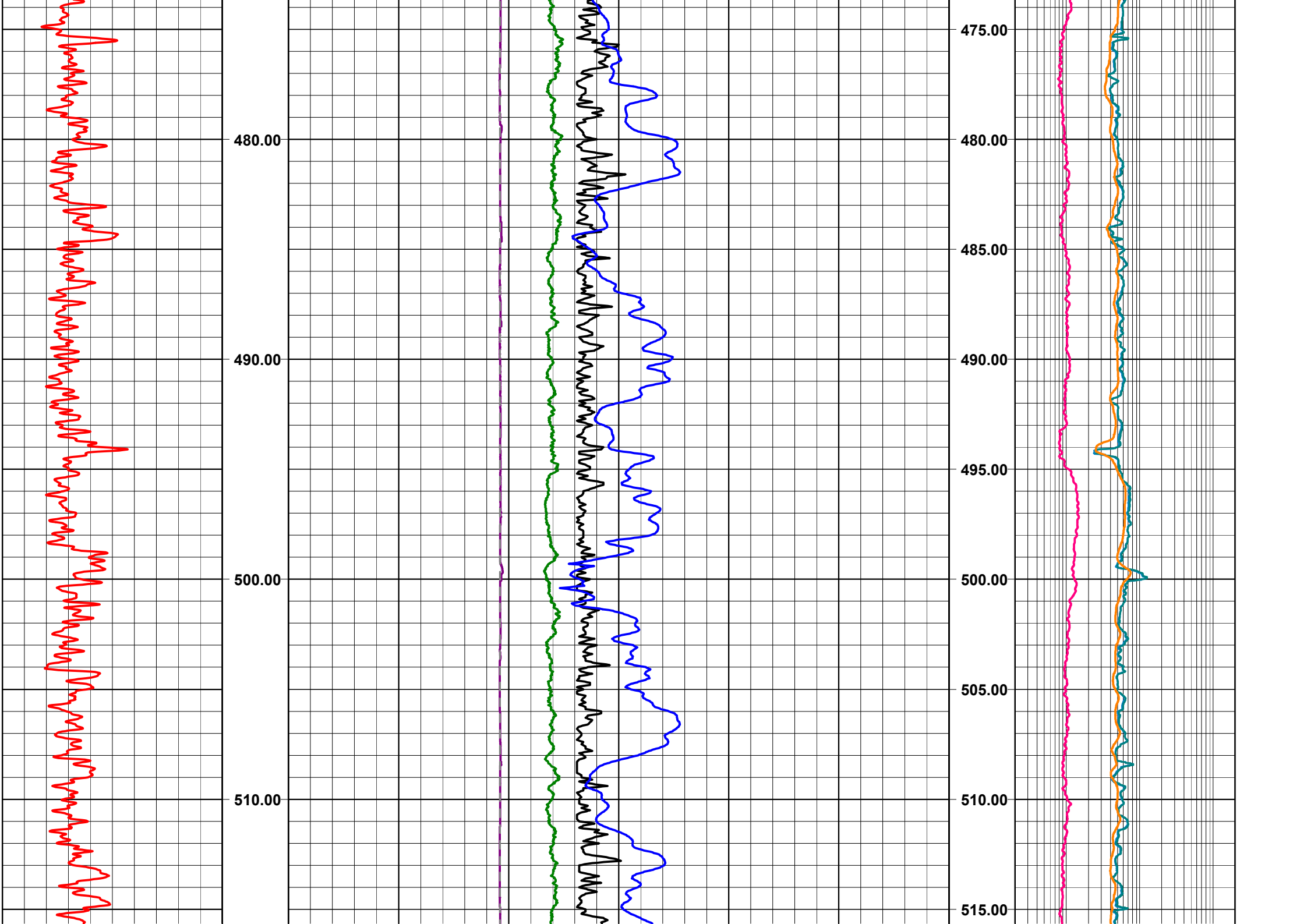
350.00  
355.00  
360.00  
365.00  
370.00  
375.00  
380.00  
385.00

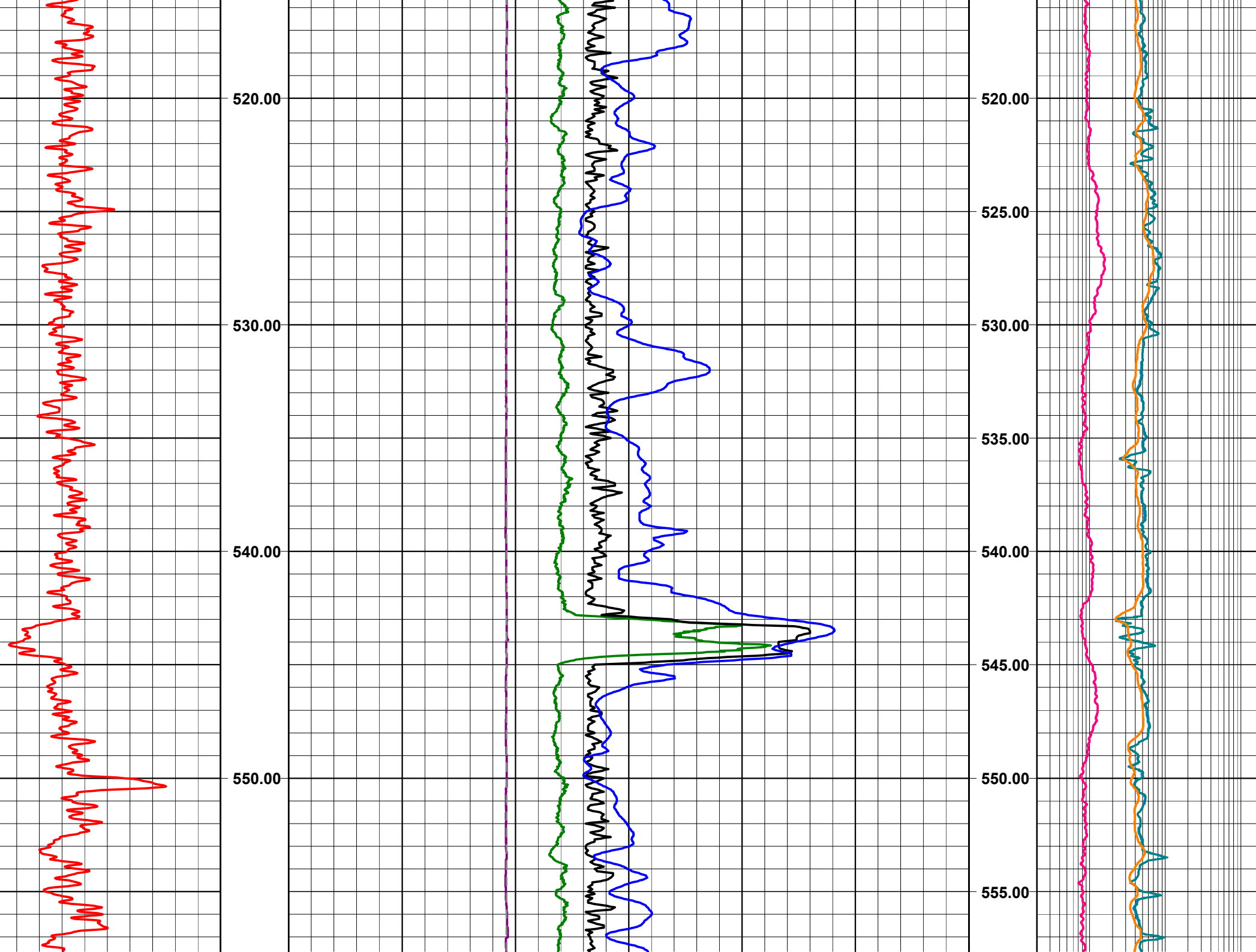


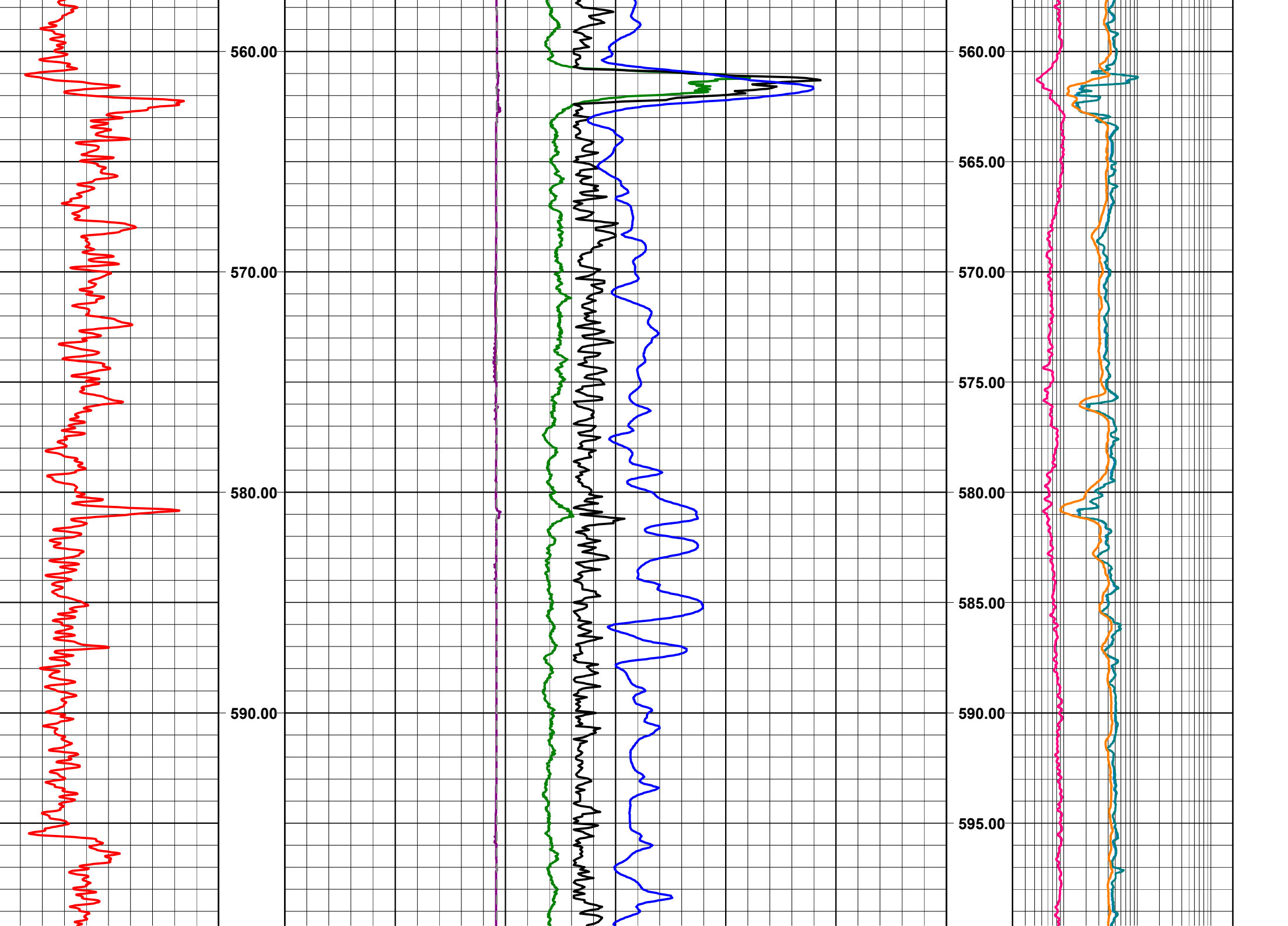


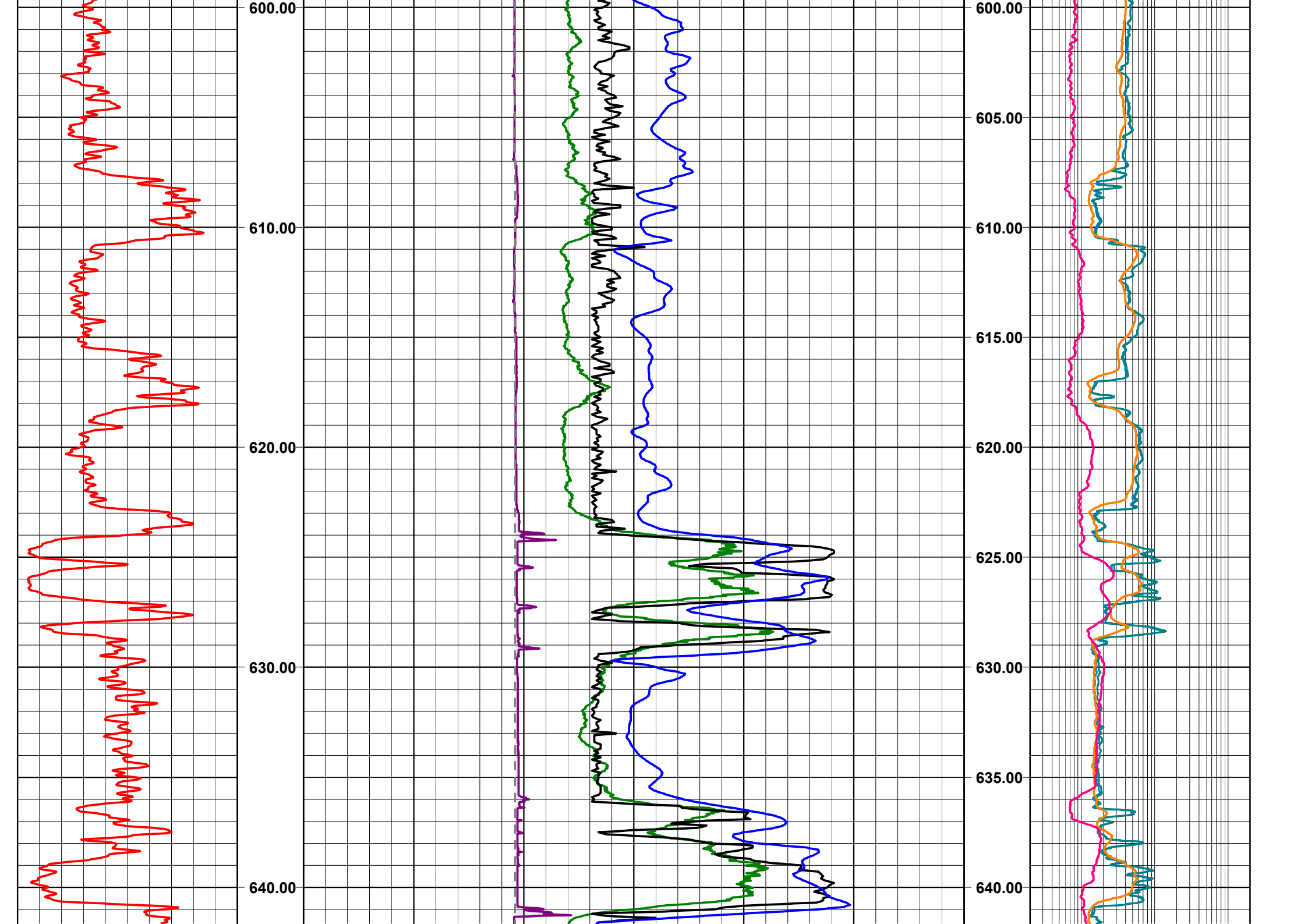


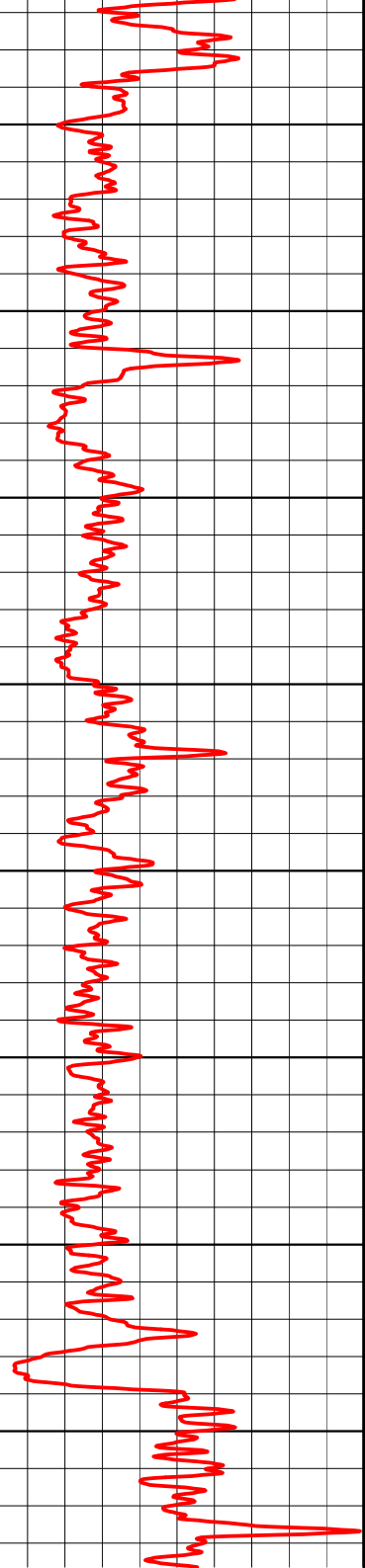




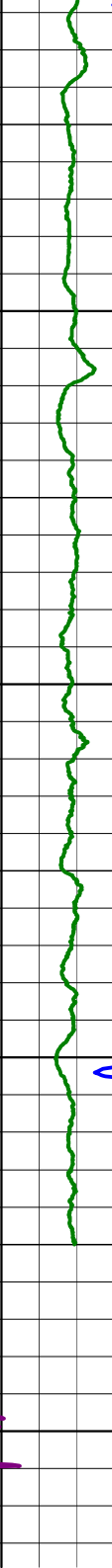
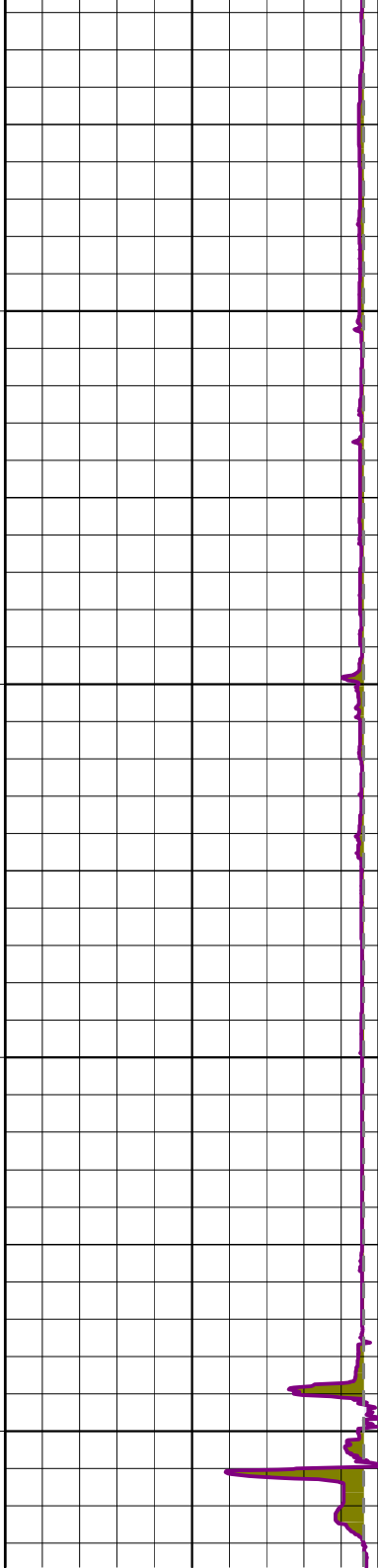




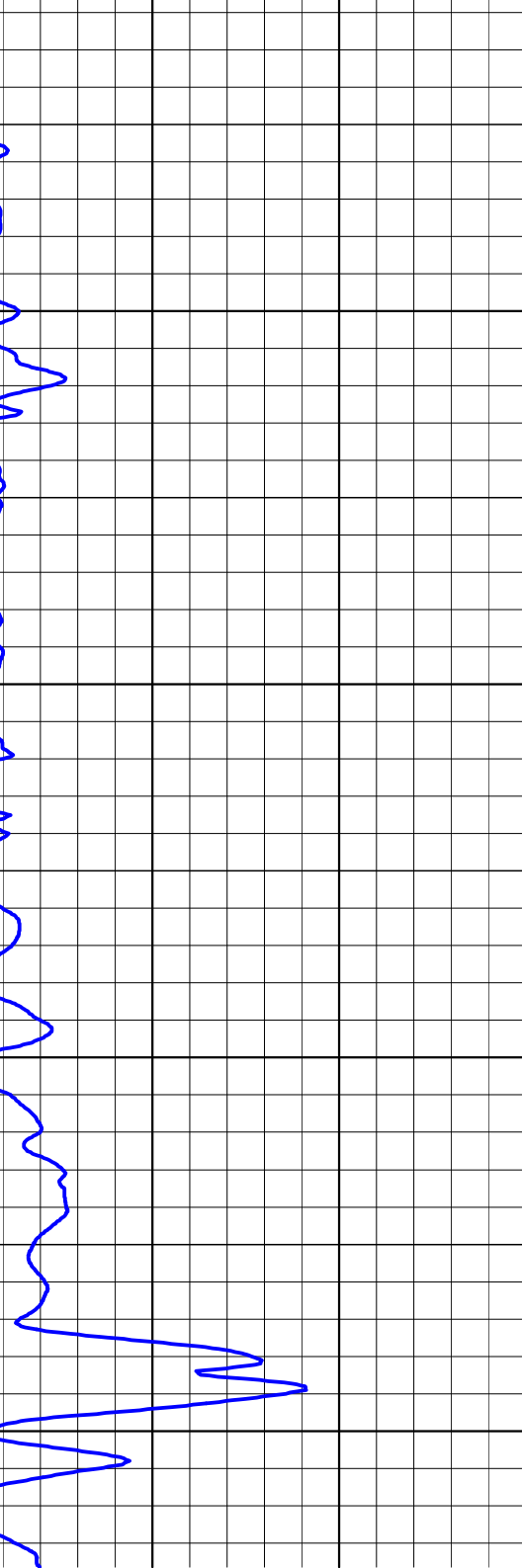




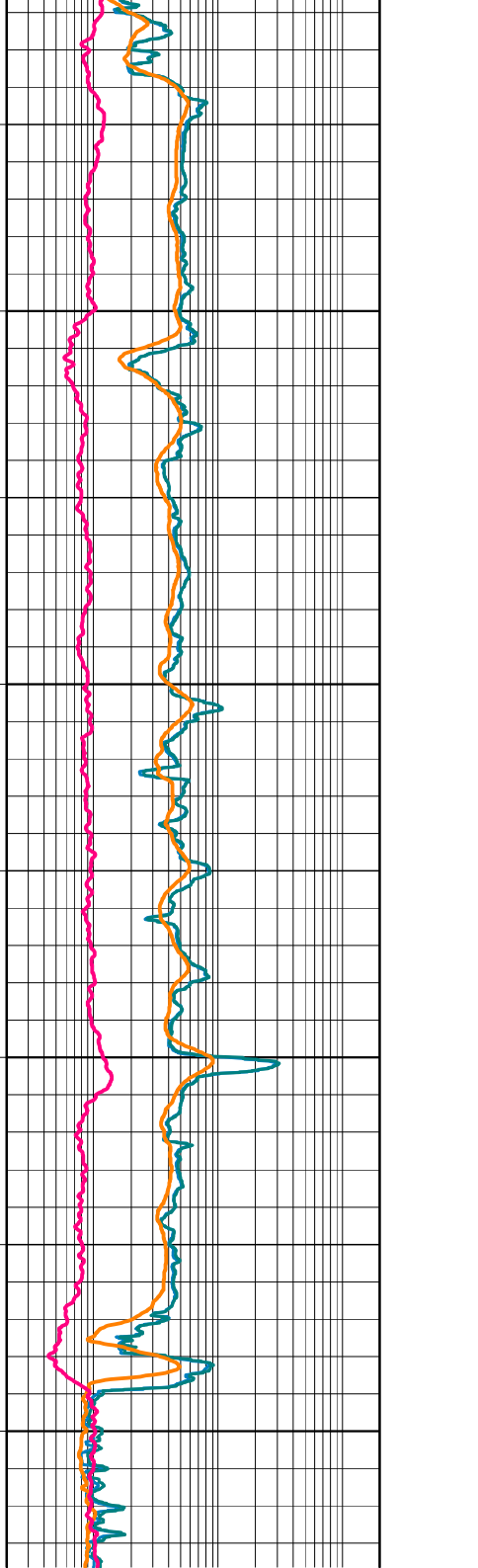
650.00  
660.00  
670.00  
680.00

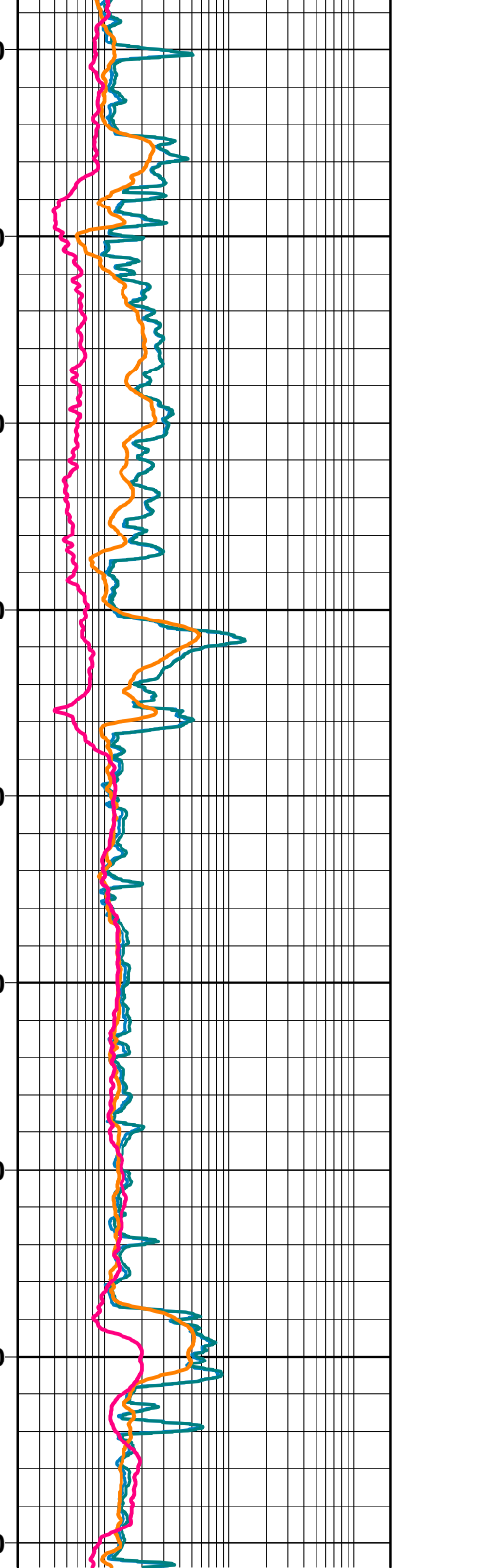
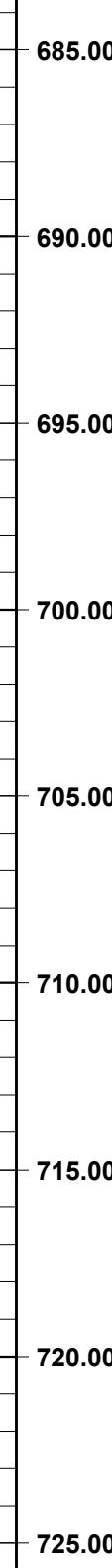
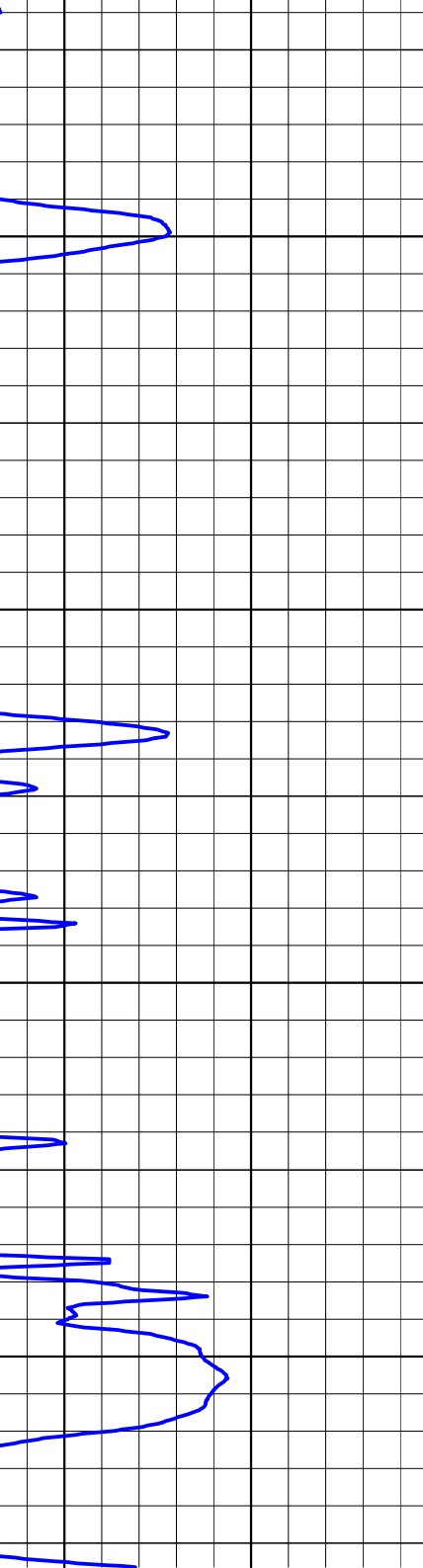
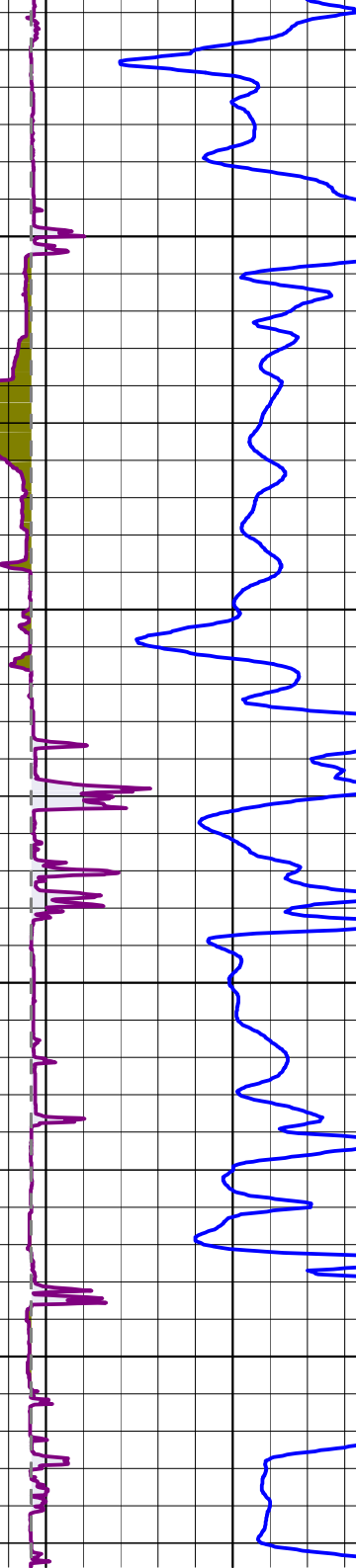
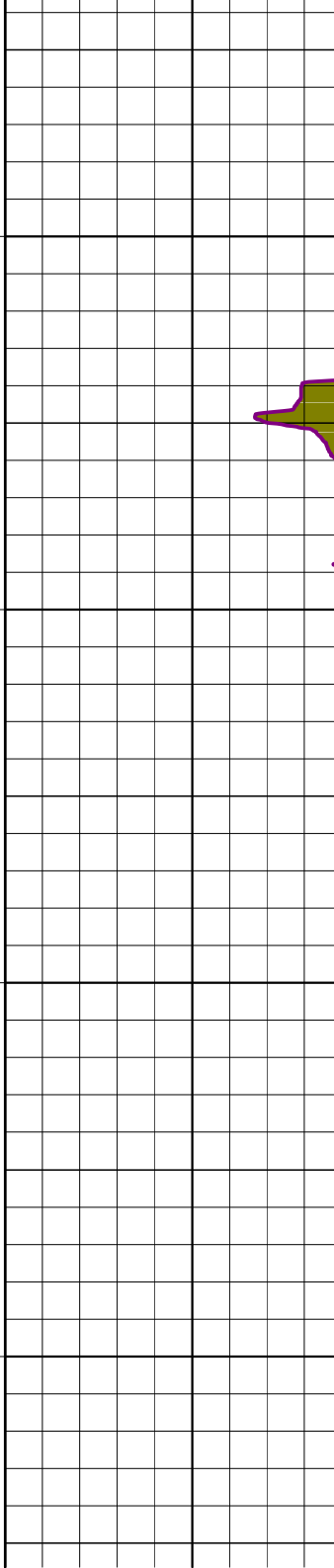
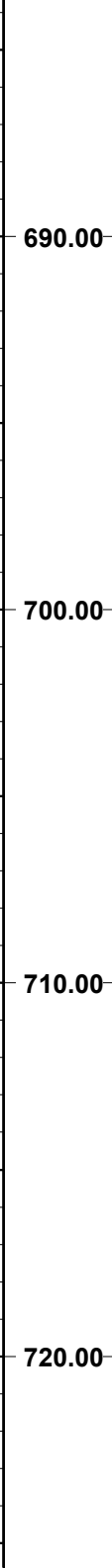
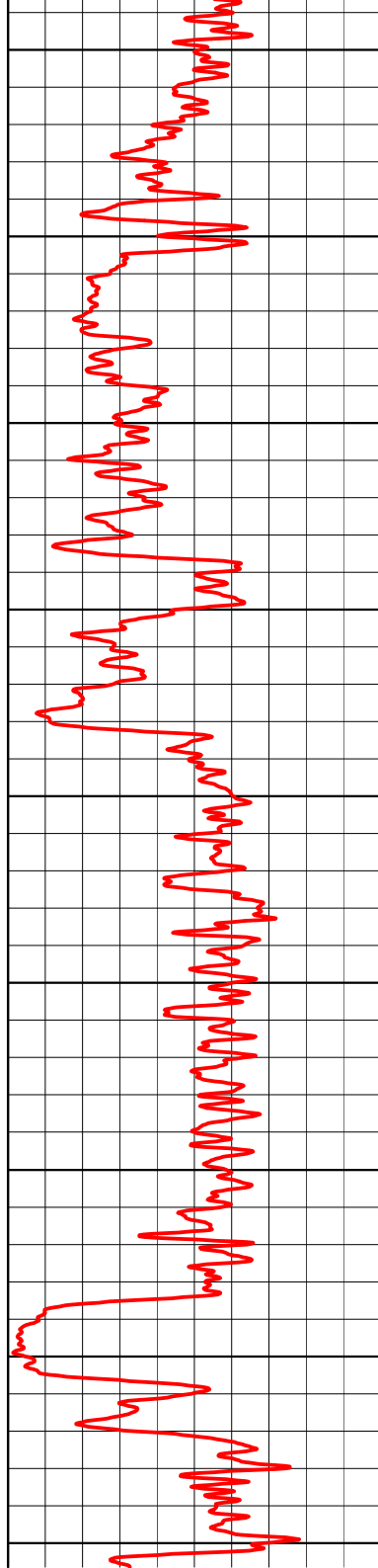


650.00  
660.00  
670.00  
680.00

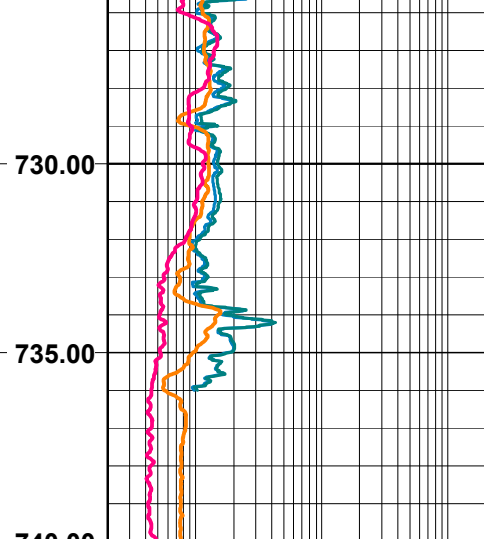
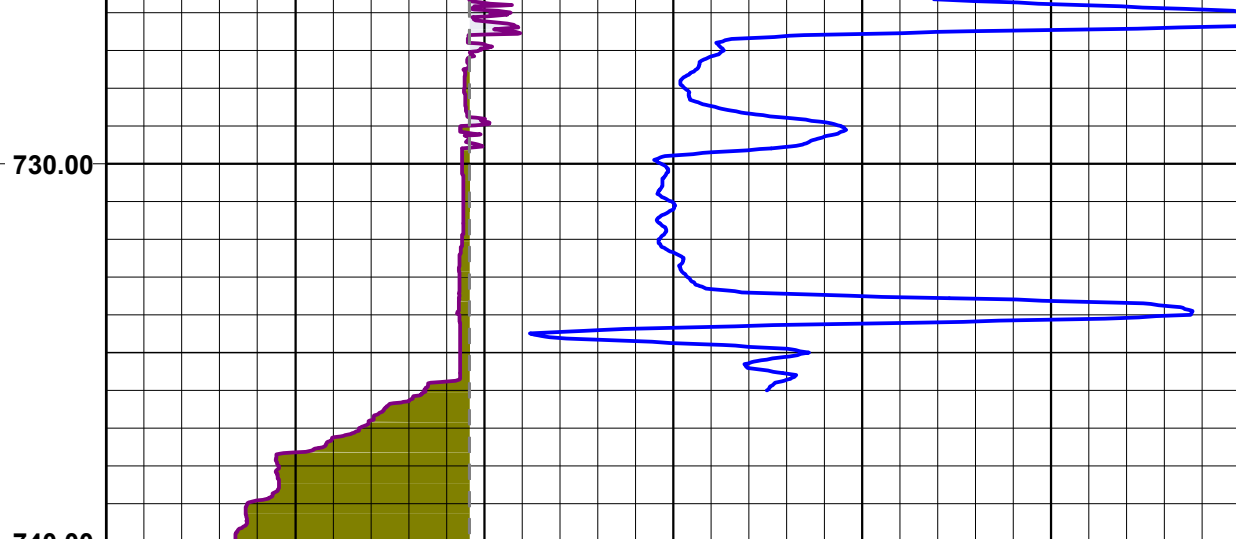
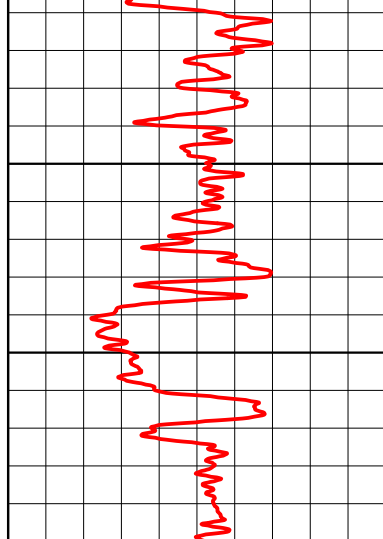


645.00  
650.00  
655.00  
660.00  
665.00  
670.00  
675.00  
680.00









PG (API)	
0.0	300.0

NPHI (Kp %)	
-5.0	95.0
RoB (g/cm3)	
3.0	1.0
PA dt (u/m)	
150.0	550.0
PŚr (mm)	
0.0	250.0
PŚr nomin (mm)	
0.0	250.0

LLs (omm)	
2.0	2000.0
LLd (omm)	
2.0	2000.0
N16 (omm)	
2.0	2000.0
N64 (omm)	
2.0	2000.0